



*Introducing our Exclusive 2019 Special Editions*

Major UK Supplier of Touring Caravans and Motorhomes



# Welcome to our 2019 brochure

## About Us

Wandahome was first established in 1951, and is one the UK's original and largest retailers of leisure caravans and motorhomes.

Our 16 acre site, we believe, is one of the largest in the country and houses our own caravan park that enables all our customers to enjoy the benefit of camping overnight in truly lovely surroundings. Plus we are on hand for helpful advice, should it be needed.

Our wide selection of both motorhomes and caravans offers our customers a remarkable choice from Europe's leading suppliers and our buying power enables us to often supply units far quicker than most retailers. We pride ourselves on an unrivalled choice of vehicles to suit all budgets and tastes.

Our team, many of which have worked within our business for more than 20 years, are dedicated to offering you only the best level of service and advice on any aspect of buying or aftercare you may need.

If you have not previously used our service, then it's time to give Wandahome the chance of fulfilling your life time dream and enjoying the benefits of a leisure vehicle for you and your family. We are sure you will find the perfect model at our South Cave site.

Our aim – to be your number 1 choice when buying a new vehicle.



## Motorhome Range

New and nearly new models available

3

## Corniche Motorhomes

Fully equipped, nothing spared

4

## Westfalia Motorhomes

Inspiring and everyone's dream

8

## Fleurette Motorhomes

Finest quality without compromise

9

## Ace Caravans

Our top selling limited edition

10

## Corniche Caravans

Sophistication with guaranteed luxury

14

## PCP

Explained the easy way with terms to suit everyone

18

## About Us/Comparison Chart

Long-established UK retailer of caravans and motorhomes

19

# Motorhomes at Wandahome

Our motorhome team bring to Wandahome a wealth of experience and are committed to offering the same level of customer satisfaction to motorhome buyers that our caravan buyers have come to expect.



The team have searched for the highest quality vehicles on the market and are proud to display an extensive variety of British and European built motorhomes at our South Cave Headquarters.

## Extras

Our motorhome team has scoured the market to find the best products to help enhance your purchase. From satellite dishes to security we can provide products from the premier suppliers in the industry and have them fitted to your motorhome by our team of expert engineers. Why not ask our team about how we can help customise your motorhome ready for your next adventure?

## Test Drive A Motorhome Today

We know that a great driving experience is important which is why we are more than happy to organise a test drive with one of our experienced team members. Simply visit our site or call our team on **01430 424342** to organise your test drive today.



## Bailey Motorhomes

Bailey of Bristol are now firmly established in the motorhome market and continue to produce vehicles that provide a combination of beautiful design, superior quality and incredible value for money. Once again, we will be offering the full range of Advance and Autograph models, offering something to suit every lifestyle and budget.



## Swift Motorhomes

We are proud to be dealers for the stunning range of motorhomes from the Swift Group. As pioneers in the motorhome industry, Swift continue to invest in design and innovation to make sure that every model in their portfolio can offer both style and performance. With 5 models offering a huge selection of layouts, we are sure there is a Swift Model to suit every need.



## Fleurette Motorhomes

We are excited to announce the introduction of Fleurette Motorhomes to our already extensive fleet for 2019. Fleurette are renowned for their luxurious interiors with sleek lines and high specifications. Hand built in France by experienced craftsmen, only the best products drive away from the factory, ensuring ultimate comfort and practicality. With over 50 years of experience, Fleurette are European leaders in today's Motorhome market.



## Westfalia Motorhomes

Another exciting new venture for Wandahome is the iconic Westfalia range. In 1951, Westfalia was the first company to convert a Volkswagen bus into a motorhome. The following six decades have resulted in exceptional results for this company, combining traditional style and quality without compromise and we are pleased to be one of the few recognised Westfalia dealers in the UK.



The 2019 Swift

# CORNICHE

Motorhome

The Corniche is a recognised brand name synonymous with prestige cars, caravans and now motorhomes. We were proud to launch at the February NEC Caravan, Camping and Motorhome Show our first venture in to our very own special edition and the specification is incredible. The 2019 Corniche motorhome possesses a design befitting of a higher end vehicle to suit couples and families who are looking for a high quality vehicle with a luxurious interior.



# Our Special Edition Features

Our motorhome team have carefully selected an impressive range of added extras to ensure that the Wandahome Corniche delivers a complete vehicle at an unbelievable price. Our features include:

- Metallic cab exterior with matching bumper
- Upgraded 16" Alloy Wheels (1)
- Upgraded LED road lights and stylised headlight bezels.
- Leather Steering Wheel (2)
- Upgraded high level radio with DAB, SAT NAV and steering wheel controls
- Stylish silver techno dash kit
- Pull out awning
- 100 watt solar panel (3)
- Rear view camera and screen (4)
- 2 position front seating arrangement (5)
- Exterior BBQ point (6)
- Exterior shower point (7)
- Exterior 240v socket
- Omnivent rooflight upgrade
- Wardrobe lighting and Swift stepwell light
- Truma Drivesafe Duo Gas Changeover Regulator
- Swift Comfort Pack which includes –
  - Cruise Control (8)
  - Opening Sunroof (9)
  - Cab Air-conditioning
  - Passenger Air-bag
  - Easy action concertina door flyscreen
  - 'Silverado' soft furnishing scheme and loose fit carpets (10)
  - Status 570 Aerial (11)
  - Granite effect moulded worktop and sink (12)
  - Winter pack with waste water tank heater
  - Underfloor water pipe insulation



# The 2019 Swift

# CORNICE

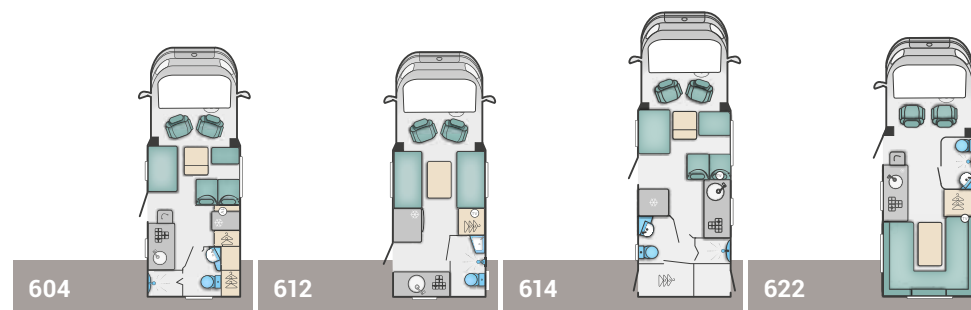
## Motorhome

## Vehicle Cab Features

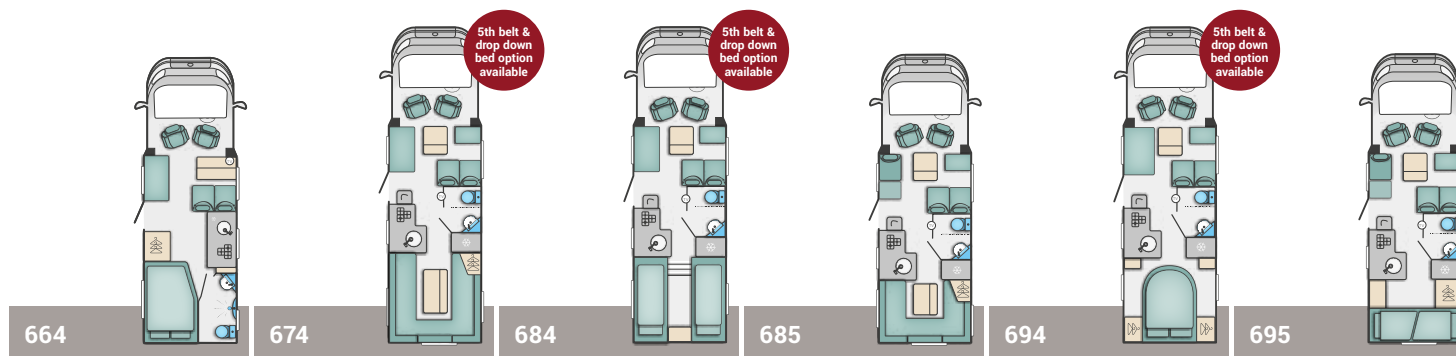
- Fiat Euro 6 130bhp, 2.3 litre engine
- Daytime running lights with headlamp height adjustment
- Battery isolation switch to prevent discharge during storage
- Driver's airbag
- Thermal cab window covers
- Removable luxury carpet
- Captains chairs with armrests and integrated headrest
- LED swan neck reading lights
- ABS brakes and EBD (electronic brake force distribution)
- Immobiliser with rolling code
- Key fob operated remote central locking of cab doors
- Electrically operated and tinted cab windows
- Adjustable steering wheel with variable power option
- 12V power socket and USB socket

## Exterior Features

- 'European Whole Vehicle Type Approval ensures compliance with weight, dimensions & safety regulations
- Distinctive streamlined low profile with SMART construction with full GRP bodyshell
- AL-KO extra-long wheelbase chassis for 674, 684, 685, 694 & 695
- Flush fitting, double glazed, tinted acrylic windows with night latch ventilation
- LED side marker lights and high level brake light
- Exclusive LED rear light clusters
- Low energy LED awning light



	604	612	614	622
Fiat MultiJet Diesel Engine	130	130	130	130
Engine Capacity	2.3ltr	2.3ltr	2.3ltr	2.3ltr
Engine Power	96kW @ 3600rpm	96kW @ 3600rpm	96kW @ 3600rpm	96kW @ 3600rpm
Engine Torque	320Nm @ 1800rpm	320Nm @ 1800rpm	320Nm @ 1800rpm	320Nm @ 1800rpm
Roof Profile	Low-line	Low-line	Low-line	Low-line
Wheel Base	3.80m / 12'6"	3.00m / 9'10"	3.80m / 12'6"	3.45m / 11'4"
Seat Belts (inc. driver)	4	2	4	2
Berths (Sleeping Positions)	4	2	4	2
Overall Length	5.97m / 19'7"	5.88m / 19'3"	6.72m / 22'1"	6.29m / 20'8"
Overall Body Width (Mirrors folded)	2.31m / 7'7"	2.31m / 7'7"	2.31m / 7'7"	2.31m / 7'7"
Overall Height	2.91m / 9'6"	2.93m / 9'7"	2.91m / 9'6"	2.91m / 9'6"
Optional Awning	Thule 6200 3.0m	Thule 6200 3.0m	Thule 6200 3.5m	Thule 6200 3.5m
Maximum Technical Permissible Laden Mass (A)	3500kg	3500kg	3500kg	3500kg
Mass in Running Order (B)	2914kg	2800kg	3007kg	2820kg
Maximum User Payload (A-B)	586kg	700kg	493kg	680kg
Essential Habitation Equipment	0kg	0kg	0kg	0kg
Thermal Insulation Grade	Three	Three	Three	Three
Recommended Maximum Trailer Weight	2000kg	1600kg	1600kg	1600kg
Gross Train Weight	5500kg	5100kg	5100kg	5100kg
<b>BED SIZES</b>				
Front Double	2.09m x 1.39m / 6'10" x 4'7"	2.09m x 1.30m / 6'10" x 4'3"	2.09m x 1.39m / 6'10" x 4'7"	
Front Nearside Single		1.88m x 0.69m / 6'2" x 2'3"		
Front Offside Single		1.88m x 0.69m / 6'2" x 2'3"		
Rear Double				2.08m x 1.69m / 6'10" x 5'7"
Rear Nearside Single				1.75m x 0.68m / 5'9" x 2'3"
Rear Offside Single				1.86m x 0.68m / 6'1" x 2'3"
Rear Bunk Upper				
Rear Bunk Lower				
Front Drop Down Bed	1.93m x 1.27m / 6'4" x 4'2"		1.93m x 1.27m / 6'4" x 4'2"	



664	674	684	685	694	695
130	130	130	130	130	130
2.3ltr	2.3ltr	2.3ltr	2.3ltr	2.3ltr	2.3ltr
96kW @ 3600rpm	96kW @ 3600rpm	96kW @ 3600rpm	96kW @ 3600rpm	96kW @ 3600rpm	96kW @ 3600rpm
320Nm @ 1800rpm	320Nm @ 1800rpm	320Nm @ 1800rpm	320Nm @ 1800rpm	320Nm @ 1800rpm	320Nm @ 1800rpm
Low-line	Low-line	Low-line	Low-line	Low-line	Low-line
3.80m / 12'6"	4.65m / 15'3"	4.30m / 14'1"	4.65m / 15'3"	4.30m / 14'1"	4.65m / 15'3"
4	4 (opt 5)	4 (opt 5)	5	4 (opt 5)	5
4	4 (opt 6)	4 (opt 6)	6	4 (opt 6)	6
6.72m / 22'1"	7.41m / 24'4"	7.41m / 24'4"	6.92m / 22'8"	7.41m / 24'4"	6.92m / 22'8"
2.31m / 7'7"	2.31m / 7'7"	2.31m / 7'7"	2.31m / 7'7"	2.31m / 7'7"	2.31m / 7'7"
2.91m / 9'6"	2.88m / 9'5"	2.88m / 9'5"	2.88m / 9'5"	2.88m / 9'5"	2.88m / 9'5"
Thule 6200 3.5m	Thule 6200 4.25m	Thule 6200 4.25m	Thule 6200 3.5m	Thule 6200 4.25m	Thule 6200 3.0m
3500kg	3500kg	3500kg	3500kg	3500kg	3500kg
2905kg	2960kg	2975kg	2975kg	2958kg	2985kg
595kg	540kg	525kg	525kg	542kg	515kg
0kg	0kg	0kg	0kg	0kg	0kg
Three	Three	Three	Three	Three	Three
1600kg	2000kg	2000kg	2000kg	2000kg	2000kg
5100kg	5500kg	5500kg	5500kg	5500kg	5500kg
2.09m x 1.23m / 6'9" x 4'0"	2.09m x 1.39m / 6'10" x 4'7"	2.09m x 1.39m / 6'10" x 4'7"	2.11m x 1.39m / 6'11" x 4'7"	2.09m x 1.39m / 6'10" x 4'7"	2.11m x 1.39m / 6'11" x 4'7"
1.87m x 1.26m / 6'2" x 4'2"	2.06m x 1.83m / 6'9" x 6'0"	2.08m x 1.45m / 6'10" x 4'9"	2.06m x 1.37m / 6'9" x 4'6"	1.83m x 1.33m / 6'0" x 4'4"	
	1.83m x 0.68m / 6'0" x 2'3"	1.92m x 0.80m / 6'4" x 2'7"			
	1.91m x 0.68m / 6'3" x 2'3"	1.92m x 0.80m / 6'4" x 2'7"			
					1.95m x 0.76m / 6'5" x 2'6"
					1.89m x 0.73m / 6'2" x 2'5"
	1.93m x 1.27m / 6'4" x 4'2" (option)	1.93m x 1.27m / 6'4" x 4'2" (option)	1.93m x 1.27m / 6'3" x 4'2"	1.93m x 1.27m / 6'4" x 4'2" (option)	1.93m x 1.27m / 6'4" x 4'2"

- Spare wheel on under slung carrier (604, 614, 622 & 664) (Fix & Go on 674, 684, 685, 694 & 695)
- Heavy duty chassis extensions ready for optional towbar

## Interior Features

- 'Silverado' soft furnishing scheme with scatter cushions
- 'Aralie Sen' woodgrain with contemporary colouring and 'Oyster' grey curved upper locker doors with gloss 'Aralie Sen' accents
- Chrome handles with push-button locks on overhead locker doors
- Swift AirWave cushioning for greater seating and sleeping comfort
- Exclusive 'Duvalay Duvalite' fixed bed mattress with lightweight memory fibre technology - hypoallergenic, excellent pressure relief, dustmite resistant and 100% recyclable (664, 684 & 694 and drop down beds on 604, 614, 685 & 695)
- Luxury soft pile removable carpets for flexibility
- 'French Oak' effect, high impact, scratch resistant flooring
- Dometic 85 litre manual selection fridge with 230V, gas and 12V operation (622 & 664)
- Dometic 138 litre slimline fridge in 604, 614, 674, 684, 685, 694 & 695
- Combi thermostatic oven, grill and 3 burner gas
- Built-in microwave oven with digital controls
- Granite effect moulded kitchen sink with removable drainer and food grade nylon chopping board
- Chrome effect mixer taps and Ecocamel Orbit shower head with on/off button for a powerful shower that uses less water
- Dual fuel heating with Truma Combi 4 1.8kW electric/4kW gas/3.8kW combined (Combi 6 1.8kW electric/6kW gas/5.8kW combined in 674, 684, 685, 694 & 695)
- 100 litre internal fresh water tank and 68 litre waste water tank with level sensors
- TV station with 230V & 12V sockets, aerial socket
- LED spotlights and ambient lighting throughout



Introducing the new 2019

# Kepler One, Six & Sixty



We are excited to reveal that Wandahome South Cave is now stocking the all-new 2019 Westfalia Kepler range. In 1951 Westfalia was the first company to convert a Volkswagen bus into a motorhome. The following six decades have resulted in exceptional results for this company and we are pleased to be one of the few recognised Westfalia dealers in the UK.

Each Westfalia Kepler model exudes perfection, innovation and experience, delivering a vehicle you can rely on for those short weekend trips and extended continental journeys.

#### Kepler One includes:

Width: 2.29m Height: 1.99m

- 'Pop-Top' roof with comfortably large double bed measuring 1.90m x 1.20m
- Fully lined Wet Room with shower and toilet for added practicality

#### Kepler Six includes:

Width: 2.29m Height: 1.99m

- 2.0L Turbodiesel engine with the choice of a manual or automatic gearbox
- Fully integrated kitchen with clever storage solutions plus a 2 burner hob and refrigerator

#### Kepler Sixty includes:

Width: 2.29m Height: 1.99m

- Iconic and eye-catching design with innovative solutions and sophisticated details
- Sleek and impressive interior featuring two-tone leather upholstery



Introducing the new 2019

# Magister & Discover

Range Range



We are excited to announce that the all new Fleurette 2019 ranges have now arrived on the forecourt at Wandahome. Manufactured in France, the European style, build-quality and class looms out of each perfectly placed Fleurette motorhome.

We stock both the spacious low-profile Magister range and the unbelievably comfortable A-Class Discover range.

Fleurette motorhomes have already established themselves as a firm favourite across Europe, and the team here at Wandahome is eager to bring its products to the UK.

**2018**  
Over 50 years of  
shared emotion



## Magister Range includes:

Width: 2.34m Height: 2.75m GVW: 3500Kg

- Ultra-spacious low profile range
- Exclusive, high quality interiors perfectly adapted to your travelling needs in all terrains

## Discover Range includes:

Width: 2.30m Height: 2.85m GVW: 3500Kg

- Prestigious A-Class range offering top of the range features
- Carefully thought-out, sophisticated designs and fittings created to make everyday life easier



## The 2019 Swift

# ACE

The Ace brand of caravans was originally manufactured in Hull in 1962. Wandahome are proud to be the only retailer exclusively selling this iconic brand for 2019.

We are overjoyed to be presenting such an extensive range of caravans ideal for couples as well as great layouts for all families including, for the first time in 2019, our 8ft wide models.





## **ACE** Iconic brand and the **AWARD** is back!

When, in 2013, we came up with the idea of a Special Limited Edition Ace a concept was born and surprised all of us by the amazing volume of our customers that truly love these caravans.

We could never imagine its success, and for 2019 it's an 11 model line-up, the best choice since its launch.

Ace originally was a medium priced luxury tourer but the manufacturer wanted bigger and better and introduced a spectacular new model called Award.

This has got everything you could ever want: space, specification and a luxurious feel. The new 8ft wide Award is a vehicle of the future, but launching now...take a look, you won't be disappointed.



# The 2019 Swift ACE

## Technical Specifications

### Key features

- ATC fitted as standard on 2019 models
- European Whole Vehicle Type Approval ensures compliance with strict weight, dimension and safety regulations
- EN1645 Grade 3 classification for heating and thermal insulation
- Thatcham Category 6 approved pro-active tracker pre-installed as part of Swift command system (subject to annual subscription)
- New front window design & 3 opening windows
- LED side marker running lights
- Wide access gas locker door with two compression locks
- Fixing bars for rear mounted optional Thule Elite G2 two cycle rack
- Strong, moisture proof 'PURE' Polyurethane timberless framed body shell with polystyrene insulation core (25mm in sidewalls, 32mm in roof)

### Special Interior features

- Unique upholstery scheme complete with four scatter cushions
- Entrance door flyscreen
- Exclusive Duvalay Duvalite mattress with lightweight memory fibre technology, hypoallergenic with excellent pressure relief (fixed bed models only)
- Radio / CD / MP3 Player with iPod connection
- Chrome effect kitchen and vanity taps
- Chrome sockets and switches

	Berths				
Number of Axles	1	1	1	1	1
Internal Length (at bed box height)	4.34m / 14'3"	4.74m / 15'7"	5.83m / 19'2"	5.83m / 19'2"	
Overall Width*	2.25m / 7'5"	2.25m / 7'5"	2.25m / 7'5"	2.25m / 7'5"	
Overall Height (inc. TV Aerial)*	2.59m / 8'6"	2.59m / 8'6"	2.59m / 8'6"	2.59m / 8'6"	
Maximum Internal Headroom	1.95m / 6'5"	1.95m / 6'5"	1.95m / 6'5"	1.95m / 6'5"	
Overall Length*	6.05m / 19'10"	6.45m / 21'2"	7.54m / 24'9"	7.54m / 24'9"	
Awning A/A Dimension	8.59m / 28'2"	8.99m / 29'6"	10.08m / 33'1"	10.08m / 33'1"	
Mass in Running Order (inc. tolerance)	1104kg	1154kg	1295kg	1335kg	
Max Technical Permissible Laden Mass	1225kg	1300kg	1451kg	1491kg	
Total User Payload	121kg	145kg	156kg	156kg	
Personal Effects Payload	121kg	145kg	156kg	156kg	
Tyre Size	185 R14C 102Q	185 R14C 102Q	185 R14C 102Q	185 R14C 102Q	
Truma Combi 4 Boiler	1.8Kw electric/4Kw gas/3.8Kw Comb.	✓	✓		
Truma Combi 6 Boiler	1.8Kw electric/6Kw gas/5.8Kw Comb.			✓	✓
Front Double	202cm x 180cm (6'8" x 5'11")	202cm x 128cm (6'8" x 4'2")	202cm x 159cm (6'8" x 5'3")	202cm x 159cm (6'8" x 5'3")	
Or Front Nearside Single	190cm x 72cm (6'3" x 2'4")		159cm x 72cm (5'3" x 2'4")	159cm x 72cm (5'3" x 2'4")	
And Front Offside Single	180cm x 72cm (5'11" x 2'4")		159cm x 72cm (5'3" x 2'4")	159cm x 72cm (5'3" x 2'4")	
Rear Double		189cm x 132cm (6'2" x 4'4")	185cm x 133cm (6'1" x 4'4")	190cm x 133cm (6'3" x 4'4")	
Side Single Offside					
Side Single Nearside					
Side Bunk Offside					
Side Bunk Nearside					
Side Fixed Lower Bunk					
Side Fixed Upper Bunk					

BED SIZES

- Passive infra-red alarm system with tilt sensor and keyfob operation
- Ecocamel Orbit shower head with on/off button for a powerful shower that uses less water and shower bi-fold door retained on track for improved access with travel lock
- Horrex pleated 4 sided blinds to all windows

- Fitted microwave
- Illuminated washroom mirror

### Special Exterior features

- Receiver for optional AL-KO Secure Wheel Lock (two on Pioneer, Prestige, Quartz, Nightstar & Superstar)

- AL-KO AKS 3004 stabiliser
- New 'Edge' alloy wheels
- BBQ point for alfresco cooking
- 230v exterior socket
- One piece exterior door with interior moulded liner, window and blind
- 100 watt roof mounted solar panel

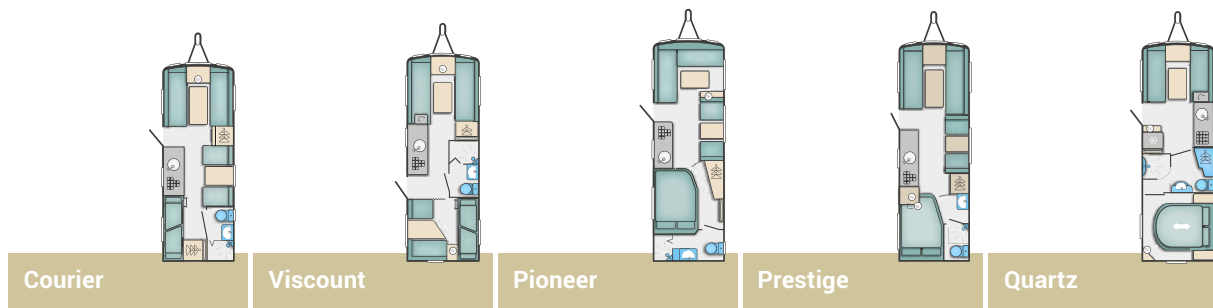


Ambassador

Envoy

Diplomat

Globetrotter



Courier	Viscount	Pioneer	Prestige	Quartz
1	1	2	2	2
5.60m / 18'4"	5.83m / 19'2"	6.27m / 20'7"	6.27m / 20'7"	6.27m / 20'7"
2.25m / 7'5"	2.25m / 7'5"	2.25m / 7'5"	2.25m / 7'5"	2.25m / 7'5"
2.59m / 8'6"	2.59m / 8'6"	2.59m / 8'6"	2.59m / 8'6"	2.59m / 8'6"
1.95m / 6'5"	1.95m / 6'5"	1.95m / 6'5"	1.95m / 6'5"	1.95m / 6'5"
7.31m / 24'0"	7.54m / 24'9"	7.98m / 26'2"	7.98m / 26'2"	7.98m / 26'2"
9.85m / 32'4"	10.08m / 33'1"	10.52m / 34'6"	10.52m / 34'6"	10.52m / 34'6"
1309kg	1372kg	1446kg	1395kg	1485kg
1483kg	1550kg	1626kg	1620kg	1645kg
174kg	178kg	180kg	225kg	160kg
174kg	176kg	180kg	180kg	160kg
185 R14C 102Q	185 R14C 102Q	185/70 R14 88T	185/70 R14 88T	185/70 R14 88T

✓	✓	✓	✓	✓
202cm x 170cm (6'8" x 5'7")	202cm x 180cm (6'8" x 5'11")	206cm x 134cm (6'9" x 4'5")	202cm x 180cm (6'8" x 5'11")	202cm x 159cm (6'8" x 5'3")
	190cm x 72cm (6'3" x 2'4")		180cm x 72cm (5'11" x 2'4")	159cm x 72cm (5'3" x 2'4")
	180cm x 72cm (5'11" x 2'4")		190cm x 72cm (6'3" x 2'4")	159cm x 72cm (5'3" x 2'4")
		194cm x 132cm (6'4" x 4'4")	192cm x 132cm (6'4" x 4'4")	185cm x 133cm (6'1" x 4'4")
180cm x 83cm (5'11" x 2'9")		180cm x 62cm (5'11" x 2'0")	180cm x 62cm (5'11" x 2'0")	
	180cm x 67cm (5'11" x 2'2")			
176cm x 59cm (5'9" x 1'11")		176cm x 59cm (5'9" x 1'11")	176cm x 59cm (5'9" x 1'11")	
	176cm x 59cm (5'9" x 1'11")			
183cm x 57cm (6'0" x 1'10")	183cm x 57cm (6'0" x 1'10")			



Award Nightstar	Award Superstar
2	2
6.27m / 20'7"	6.27m / 20'7"
2.46m / 8'1"	2.46m / 8'1"
2.59m / 8'6"	2.59m / 8'6"
1.95m / 6'5"	1.95m / 6'5"
7.98m / 26'2"	7.98m / 26'2"
10.56m / 34'8"	10.56m / 34'8"
1545kg	1552kg
1725kg	1732kg
225kg	225kg
180kg	180kg
185/70 R14 88T	185/70 R14 88T

✓	✓
225cm x 180cm (7'4" x 5'11")	225cm x 180cm (7'4" x 5'11")
180cm x 73cm (5'11" x 2'5")	180cm x 73cm (5'11" x 2'5")
180cm x 73cm (5'11" x 2'5")	180cm x 73cm (5'11" x 2'5")
196cm x 135cm (6'5" x 4'5")	
190cm x 134cm (6'3" x 4'5")	190cm x 134cm (6'3" x 4'5")
	182cm x 72cm (6'0" x 2'4")



SUBJECT TO T&Cs



1. Fitted USB sockets
2. Unique upholstery scheme complete with four scatter cushions
3. Fitted microwave
4. New 7" LCD colour display touchscreen control panel

The 2019 Swift

# CORNICHE

The Corniche, as we all know, is a recognised brand name synonymous with prestige cars and caravans. Exclusively to Wandahome, the 2019 Corniche possesses a specification befitting of a higher end vehicle to suit both couples and families who are looking for a high-quality vehicle with a complete specification.



Models



Min Berth

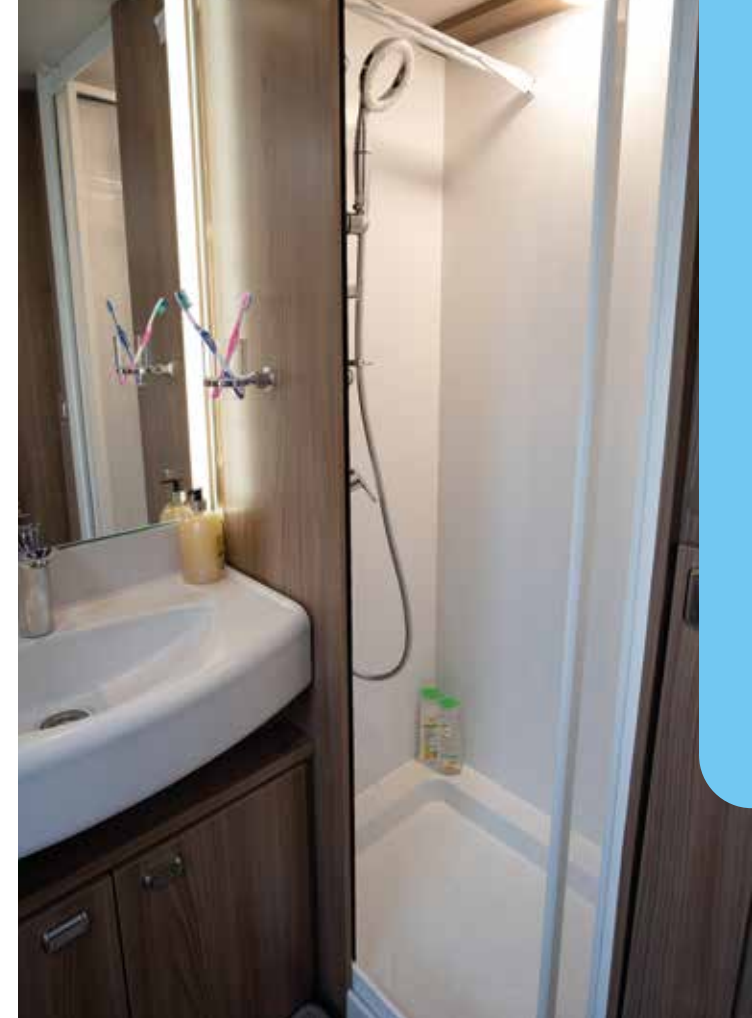


Max Berth



Heating





## **CORNICHE** Sophistication with guaranteed luxury

Once again, our Special Edition Corniche surpasses all expectations with the superior quality and specification of this high end caravan.

The Carbon look front locker and elegant graphics make the Corniche stand out in any crowd, whilst the exquisitely luxurious, yet subtle interior gives you that 'at home' feeling when out on your adventure.



# The 2019 Swift

# CORNICHE

## Technical Specifications

### Key features

- ATC fitted as standard on 2019 models
- European Whole Vehicle Type Approval ensures compliance with strict weight, dimension and safety regulations
- EN1645 Grade 3 classification for heating and thermal insulation
- AL-KO AKS 3004 Stabiliser
- Thatcham Category 6 approved pro-active tracker pre-installed as part of Swift command system (subject to annual subscription)
- Enhanced SMART Plus construction with strong, moisture proof 'PURE' Polyurethane timberless framed body shell and 44mm 'sandwich' floor construction with GRP outerskin, ply upper and high rigidity Styrofoam core
- Hail resistant exterior GRP roof, fully bonded roof for extra strength and flatness with polystyrene insulation core.
- One piece GRP rear panel with exclusive LED light clusters which provide better visibility in poor weather conditions
- Sweeping GRP front panel with triple flush fitting windows, panoramic sunroof and LED front marker lights
- LED Side marker running lights
- Truma Central Heating System fitted as standard

### Special Interior features

- Alarm system for added security

	Berths
	Number of Axles
	Internal Length (at bed box height)
	Overall Width*
	Overall Height (inc. TV Aerial)*
	Maximum Internal Headroom
	Overall Length*
	Awning A/A Dimension
	Mass in Running Order (inc. tolerance)
	Max Technical Permissible Laden Mass
	Total User Payload
	Personal Effects Payload
	Tyre Size
BED SIZES	Front Double
	Or Front Nearside Single
	And Front Offside Single
	Rear Double
	Side/Rear Single Offside
	Side/Rear Single Nearside
	Side Bunk Offside
	Side Bunk Nearside
	Side Fixed Lower Bunk
	Side Fixed Upper Bunk

- Uplift wooden fascia panel with Corniche logo
- Illuminated back-lit acrylic sink splash back in kitchen area
- Exclusive Duvalay Duvalite mattress with lightweight memory fibre technology, hypoallergenic with excellent pressure relief

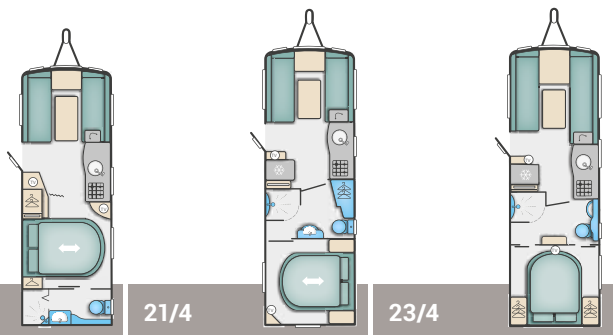
16/2	17/4	18/4	19/4
1	1	1	1
4.95m / 16'3"	5.29m / 17'4"	5.60m / 18'4"	5.83m / 19'2"
2.23m / 7'4"	2.23m / 7'4"	2.23m / 7'4"	2.23m / 7'4"
2.61m / 8'7"	2.61m / 8'7"	2.61m / 8'7"	2.61m / 8'7"
1.95m / 6'5"	1.95m / 6'5"	1.95m / 6'5"	1.95m / 6'5"
6.66m / 21'10"	7.00m / 23'0"	7.31m / 24'0"	7.54m / 24'9"
9.32m / 30'7"	9.66m / 31'8"	9.97m / 32'9"	10.20m / 33'6"
1265kg	1336kg	1368kg	1446kg
1392kg	1487kg	1522kg	1600kg
127kg	151kg	154kg	156kg
127kg	151kg	154kg	156kg
185 R14C 102Q	185 R14C 102Q	185 R14C 102Q	195/70 R15C 104R
202cm x 186cm (6'8" x 6'1")	202cm x 176cm (6'8" x 5'9")	202cm x 156cm (6'8" x 5'1")	202cm x 156cm (6'8" x 5'1")
196cm x 72cm (6'4" x 2'4")	176cm x 72cm (5'9" x 2'4")	156cm x 72cm (5'1" x 2'4")	156cm x 72cm (5'1" x 2'4")
186cm x 72cm (6'1" x 2'4")	186cm x 72cm (6'1" x 2'4")	156cm x 72cm (5'1" x 2'4")	156cm x 72cm (5'1" x 2'4")
			190cm x 133cm (6'3" x 4'4")
	180cm x 62cm (5'11" x 2'0")	192cm x 68cm (6'4" x 2'3")	
		183cm x 73cm (6'0" x 2'5")	
	176cm x 59cm (5'9" x 1'11")		

- Ecocamel Orbit shower head with on/off button for a powerful shower that uses less water and shower bi-fold door retained on track for improved access with travel lock
- Illuminated back-lit washroom mirror

### Special Exterior features

- Special graphics

- Access locker door fitted to near side
- Exterior mains socket
- BBQ point for alfresco cooking
- Side lift jack and brackets
- Heavy duty corner steadies – lockable at rear
- Mudflaps
- 100 watt roof mounted solar panel



20/4

21/4

23/4



1



2



2

5.83m / 19'2"

6.27m / 20'7"

6.27m / 20'7"

2.23m / 7'4"

2.23m / 7'4"

2.23m / 7'4"

2.61m / 8'7"

2.61m / 8'7"

2.61m / 8'7"

1.95m / 6'5"

1.95m / 6'5"

1.95m / 6'5"

7.54m / 24'9"

7.98m / 26'2"

7.98m / 26'2"

10.20m / 33'6"

10.64m / 34'11"

10.64m / 34'11"

1374kg

1554kg

1561kg

1530kg

1714kg

1721kg

156kg

160kg

160kg

156kg

160kg

160kg

185 R14C 102Q

185/70 R14 88T

185/70 R14 88T

202cm x 156cm (6'8" x 5'1")

202cm x 156cm (6'8" x 5'1")

202cm x 156cm (6'8" x 5'1")

156cm x 72cm (5'1" x 2'4")

156cm x 72cm (5'1" x 2'4")

156cm x 72cm (5'1" x 2'4")

156cm x 72cm (5'1" x 2'4")

156cm x 72cm (5'1" x 2'4")

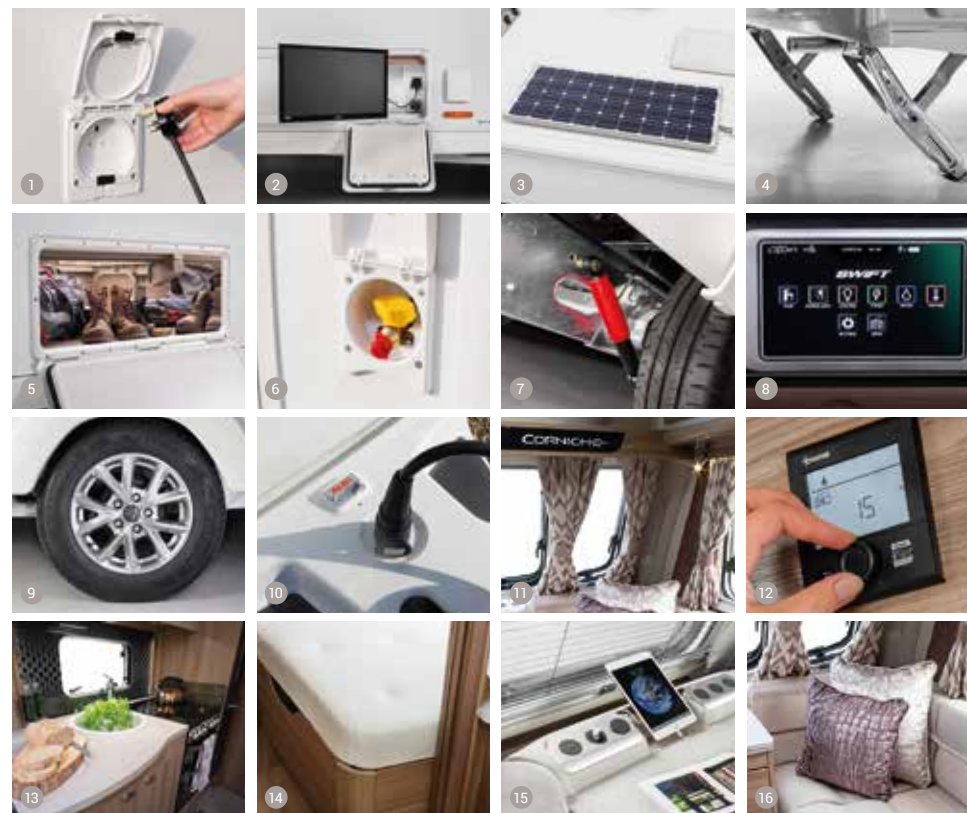
186cm x 72cm (6'1" x 2'4")

185cm x 133cm (6'1" x 4'4")

185cm x 133cm (6'1" x 4'4")

190cm x 133cm (6'3" x 4'4")

- Key fob awning light control
- Interior USB charging point
- Carbon fibre effect front locker
- External entertainment hatch
- AL-KO manouvering handle
- On route gas bulkhead regulator



1. Exterior mains socket
2. Entertainment hatch
3. 100W roof mounted solar panel for enhanced Independence
4. Heavy duty front and rear corner steadies lockable at rear
5. External access locker and mains socket
6. BBQ point
7. Shock absorbers
8. New 7" LCD colour touchscreen control panel
9. 'Edge' alloy wheels
10. ATC fitted on all models in the Corniche range
11. Exclusive graphics and upholstery scheme with four sided cassette pleated blinds
12. Truma combi boiler
13. Illuminated sink splash back
14. Exclusive 'Duvalay Duvalite' mattress with lightweight memory fibre technology
15. Fitted USB sockets
16. Four scatter cushions

A new way to purchase your new Caravan or Motorhome

# PCP – Personal Contract Purchase



## Explained the easy way

## How does it work?

To show you in simple terms let's work on a caravan priced at £20,000

### Conventional Financing £20,000 Caravan

VS

### PCP (Personal Contract Purchase) Same £20,000 Caravan

But this time we set a value (G.F.V Guaranteed Future Value) to the end of the agreement

The benefits to you are:

- Shorter term cycle
- Lower monthly payments
- More flexibility
- Peace of mind

## So what happens at the end of the agreement?

Let's assume you have now had your caravan for 5 years and are coming up to the end of your 5 year term.

**On Conventional Finance** – Dependant on The Term you took it over you could be still

paying for another few years, same caravan, same monthly payments.

**On PCP** (Personal Contract Purchase) – You have come to the end of your contract!

### You now have 3 options

1. Pay the outstanding G.F.V. (Guaranteed Future Value) The caravan is yours to keep.
2. Part exchange the caravan – Valuations above your G.F.V. is equity/deposit towards your new caravan or motorhome.
3. Just hand it back with no more to pay. Subject to terms and conditions.

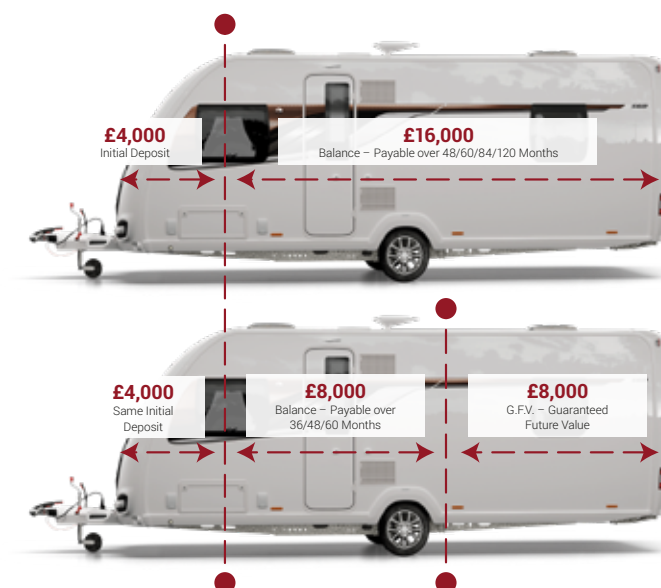
With Wandahome you can choose how much deposit you'd like to pay, the contract term and final payment.

It's ideal for those who want to keep their options open – at the end of the agreement you can choose to buy the caravan or motorhome, part exchange it for another or simply hand it back.

1. Pay the Final Repayment to own the caravan or motorhome or
2. Part exchange the caravan or motorhome subject to settlement of your existing finance agreement; new finance agreements are subject to status.
3. Return the caravan or motorhome and not pay the Final Repayment. If the caravan or motorhome is in good condition and has not exceeded the agreed maximum mileage you will have nothing further to pay. Further

information on what is considered good condition can be found at [blackhorse.co.uk/CaravanGoodConditionGuide](http://blackhorse.co.uk/CaravanGoodConditionGuide) for motorhomes. If the motorhome has exceeded the agreed maximum mileage a charge for excess mileage will apply.

Finance is available to UK residents aged 18+, subject to status. Subject to settlement of your existing finance agreement. New finance agreements are subject to status. If the motorhome or caravan is in good condition and has not exceeded the agreed maximum mileage (motorhomes only) you will have nothing further to pay. For motorhomes, there is an annual mileage restriction of 8,000 p.a.



## Holiday Park



Nestled in the heart of East Yorkshire next to our South Cave Headquarters is our Holiday park. It has been designed and built to the highest standards with spacious pitches, modern shower facilities and mains electrics. With access to local attractions, public transport and vibrant local cities it aims to deliver everything you could want for a fantastic break away. Our holiday park also offers the opportunity to become familiar with your new purchase safe in the knowledge we have experienced staff on hand to answer any of your queries.

## Aftersales

Taking care of your caravan is key to making sure you can continue enjoying your holidays year after year and our Aftersales Department can help with every aspect of it. Our dedicated team are on hand to help

you with everything from servicing to repairs and do so with a wealth of knowledge and a service we believe is second to none. Priding ourselves in our professional service we promise to help look after every details for you whether it is your first caravan or your fiftieth.

## Our Accessories

Our Waudbys superstore is one of the countries largest independent retailers of caravan accessories. With over 10,000 lines including an extensive selection of awnings, outdoor furniture, tableware, spares and much more. We can provide you with everything you need to optimise your caravanning or motorhome experience.



Our team of friendly staff are available seven days a week to answer any enquiries. Our focus on the development of our range means you are guaranteed the best products at the best prices. Not local? Don't panic! Visit our website [www.waudbys.co.uk](http://www.waudbys.co.uk) and look out for amazing deals and offers such as Free Delivery when spending £30 or more. (subject to Terms & Conditions)

## Comparison Chart

We understand that buying a caravan is a major decision. Why not write your notes on this page.

Make _____	Price £
Model _____	
Likes:- _____	Dislikes:- _____
_____	_____
_____	_____

Make _____	Price £
Model _____	
Likes:- _____	Dislikes:- _____
_____	_____
_____	_____

Make _____	Price £
Model _____	
Likes:- _____	Dislikes:- _____
_____	_____
_____	_____

**The Top Performing Caravan Dealer**  
Don't just take our word for it...  
  
86% average rating at [reviewcentre.com](http://reviewcentre.com)

“ Friendly, helpful staff, nothing too much trouble ”  
“ Go with Wandahome if you're looking to buy a new caravan ”  
“ Good service department, very efficient and friendly ”  
“ Excellent aftersales service ”





Vehicles Sales  
**Tel: 01430 424342**  
[www.wandahome.online](http://www.wandahome.online)

Shop & Accessories  
**Tel: 01430 422523**  
[www.waudbys.co.uk](http://www.waudbys.co.uk)

Brough Road, South Cave, East Yorkshire, HU15 2DB

12 miles West of Hull on A63, South Cave Junction. Opening Times: Monday – Friday 8.30am – 6pm, Saturday 9.30am – 6pm, Sunday 10am – 5pm. Winter months closed 5pm daily.

This brochure has been designed to provide you with basic information prior to making a purchase decision. It is advisable to consult with a member of staff before a final decision is made. Every effort has been made to make sure all the information in this brochure is correct at time of going to print – October 2018. Wandahome (South Cave)

Ltd reserve the right to alter technical specifications, prices and model information as materials and conditions demand and can accept no responsibility for any discrepancies between these and subsequent models. Household items illustrated in the brochure (e.g. personal effects) have been used to enhance photography and are not supplied with the caravan. Due to varying awning designs and sizes the awning sizes printed in this brochure are approximate sizes only. Awning sizes must be confirmed by a member of staff prior to purchase to confirm a correct match between caravan and awning. Weights: The method of calculating the Mass in Running Order (MRO) and user payload figures has changed in order to bring it in line with European Vehicle Directives. These weights can be explained by a member of staff on request if you require further clarification. LED Road Lights: Certain vehicles may require a secondary fuse box when towing models fitted with LED road lighting. Bed Sizes: Please note that the front double bed sizes quoted are for seating configurations without a chest of drawers. The double bed width for a layout with a chest of drawers fitted, will be reduced by 0.4m (1'4") from that stated. Limitations in the printing process may mean upholstery colours are not truly represented.



