

OUR PARTNER
DEALERS

In France:

- 06 Mistral Camping-Cars
- 11 TPL Narbonne
- 11 TPL Castelnaudary
- 13 TPL Aubagne
- 14 Horizon Caen
- 16 YPOCAMP COCV Angoulême
- 17 L.D.L La Rochelle
- 18 Solyne (Bourges Camping-Cars)
- 22 Jacqueline Plénée Jugon
- 26 Andrieux Camping-Cars
- 29 Bonjour Caravaning
- 30 TPL Nîmes
- 31 TPL Toulouse
- 33 Horizon Bordeaux
- 33 Horizon Peujard
- 34 TPL Montpellier
- 35 YPOCAMP Ouest Evasion
- 37 Camping-Cars de Touraine
- 38 Alpes Evasion 38
- 39 Juraloisir
- 40 YPOCAMP Loisirs 40
- 42 Loisirs Concept
- 43 Velay Loisirs
- 44 Caravaning Central Nantes
- 45 3CF Camping Car Centre France
- 47 Loisireo Agen
- 50 Sosson Evasion
- 56 SLC 56
- 59 Lestringuez Seclin
- 59 Lestringuez Beauvois-en-Cambresis
- 60 CLC Wattellier Loisirs
- 62 Caravan'Or Béthunes
- 63 Evasion 63
- 67 Loisirs Camping-Cars
- 69 Camping-Car 69
- 72 Huchet Loisirs
- 74 Isacar Loisirs
- 76 Caravane Service Jousse
- 80 Brousse Loisirs
- 85 L.D.L Benet
- 85 L.D.L La Roche-sur-Yon
- 86 Vienne Aventure

Abroad:

- | | |
|----------------|---|
| Germany | REISEMOBILE HARTMANN |
| Germany | CARAVANING GALERIE GmbH Mülheim-Kärlich |
| Germany | CARAVANING GALERIE GmbH Affing |
| Belgium | CTM MOTORHOMES Maldegem |
| Belgium | CTM MOTORHOMES Berlaar |
| Spain | GORBEA CENTRO CARAVANING |
| Spain | CARAVANAS OSITO Valencia |
| Spain | CARAVANAS OSITO Cabra |
| Spain | NAUTICARAVAN |
| Netherlands | HEBO CAMPERS |
| Portugal | VIDICAR |
| United Kingdom | HARBOUR CREEK MOTORHOMES |
| United Kingdom | WANDAHOME KNOTTINGLEY |
| Switzerland | GARAGE DU CHÂTEAU S.A |
| New Zealand | BRENT ROBERTS |
| New Zealand | RV EUROPEAN |



EXCELLENT SERVICE QUALITY

FOR PURCHASES MADE WITH COMPLETE PEACE OF MIND

FLEURETTE ASSISTANCE :

24 hours a day, 7 days a week, in France, abroad or at home, a team of trained on-line motorhome troubleshooting and assistance engineers are available to reassure you and assist you whatever happens.

Services free-of-charge in the 1st year for all new Fleurette* and Florium* motorhomes.

To find out more about our assistance service, visit www.fleurette.fr and www.florium.fr.

WARRANTY AND SERVICES:



**After 12 months, you will be asked if you wish to continue the service (value as at 01/01/2018 = 200 € TTC)*

STAY
IN CONTACT



Route de Niort
85490 Benet - France

www.fleurette.fr
www.florium.fr



Some models presented in this catalogue may be shown with optional equipment. Non-contractual photos: stylistic elements, décor and accessories not included. Since part of FLEURETTE CONSTRUCTEUR production is intended for export, the technical characteristics of the models may vary from one country to another; for an exact definition of the models marketed, please consult your dealer. FLEURETTE CONSTRUCTEUR reserves the right to make modifications to its models without notice. Despite the care taken in the production of this catalogue, it cannot be taken as a contractual document.

Weights and sizes: +/-5%

Conception : **COWWELL** - contact@cowwell.fr - Photographie et stylisme : Océan Production - Imprimeur : Imprimerie Raynaud



FLEURETTE

FLORIUM

2 0 1 9 C O L L E C T I O N

CREATING EMOTION

S I N C E 1 9 6 7

SOPHISTICATION MADE IN FRANCE

Our customers have been inspiring us for 50 years, we never tire of listening to their wants and needs to improve our models.

This is a common attribute found in many companies in the Vendée, the ability to carry on and develop savoir-faire and expertise thanks to teams that share the same sense of customer satisfaction. That's why we look beyond our industry to those such as the hotel industry for style, catering for practicality and sailing for designer fittings in a polyester cocoon.

This work is what helps us created sophisticated interiors and high-performance technical bodywork that ensures every trip you take is a success.

CONTENTS

Editorial.....	4
The Fleurette Constructeur trademark	5
100% polyester motorhome	6
Fitted joinery.....	7
Recovery System	8
Protect System	9
Chassis	10
Comfort & Design	11
Low-profile features	12
A-Class features	14
FLEURETTE	16
Migrateur range	18
Magister range.....	22
Discover range	28
FLORIUM	34
Baxter range	36
Mayflower range	40
Winchester range	46
BLACK PEARL limited edition series	50
Specs	52
Upholstery	56
Overview of layouts	58



The leader in premium motorhomes in France

Resolutely looking to the future, our teams carry on our company's 50 years of Made in France craftsmanship, from our first Super folding caravans right up to our latest 80LMF A-Class model. The recipe has never changed, based on pioneering techniques and hand-made design to satisfy the most exigent customers, combined with major investment in the production chain in the form of a design office of creative talents.

European group Rapido, a leader in the today's market for motorhomes, mobile homes, fitted vans and vans with elevating roofs. We share with the group the values of a family business: proximity, quality and innovation for French customers and their European neighbors.

2018

Over 50 years
of shares
emotion

1967

Jean-Lucas creates the first folding caravan, the Super or "Petite Fleurette"



1977

Production of the first on-demand motorhome with a choice of designs



1980

Creation of the rigid folding caravan. It is equipped with assisted unfolding with automatic locking



1986

Presentation of the first "river permit" boat, the LUCAS 1000



1993

Launch of the first range of low-profile models



2007

Launch of the first low-profile Fleurette, Discover



2010

Launch of the Florium contemporary line



Our experience and customer focus have enabled us to adapt to the changing times. This vision led us in 2016 to broaden our horizons with the manufacture of fitted vans for the WESTFALIA brand, which the group acquired in 2011. And, to accelerate even faster, we decided to launch a new industrial project with the construction of a new production plant in Benet (Sud Vendée), which will be home to high-tech joinery and dedicated assembly lines. This enables us to create a link between the past and the future, training new teams every day, patiently passing on our love of good craftsmanship.

2 brands of camping-car

5 production workshops

2 Van two brands

16 layouts

25 professions

30 possible styles

170 specialist artisans

Motorhome 100% POLYESTER, the best in technology

FLEURETTE CONSTRUCTEUR is, today, the only manufacturer in Europe to offer 100% polyester vehicles, produced entirely in our factory in the Vendée.

Equipped with a new unique workshop in Europe, we produce our motorhomes' bodywork to the same high traditional standard as top-class boats, thanks to our in-house specialists.

High-quality raw materials:

Our polyester composite is made up of three elements:

- The "high-tech" gel coat, a thermosetting resin-based covering, sprayed into our moulds, creating the smooth and coloured surface of pieces. It is used to provide a high finish and act as a varnish.
- The fibreglass lining is a material with structuring properties which ensures mechanical strength.
- A resin matrix, a material resistant to damp conditions, which extends the bodywork's lifespan.

The result is bodywork that is fully protected against weather risks, such as UV rays and hail.

The advantages of 100% polyester bodywork:

- Aesthetic and shiny bodywork
- A smooth and glossy appearance that doesn't change over time
- Repairable material
- A solid, anti-hail living area thanks to 3 mm thickness
- Optimum insulation provided by athermal material

Polyester storage area gates:

this moulded polyester panel also helps absorb the impact of handling tables, chairs, bicycles, etc. Our storage areas are insulated using our sandwiching technology and carpeted inside for your comfort.



FLEURETTE

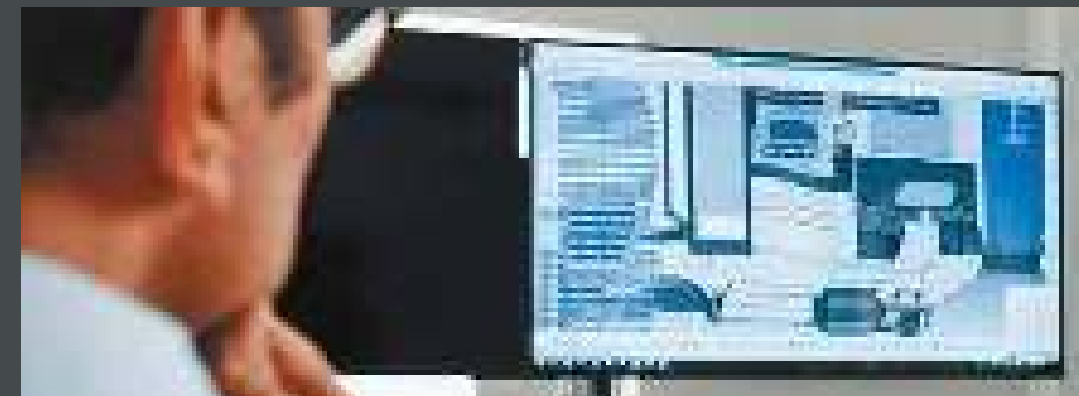
Explore our
polyester workshop
in photos
on Fleuret TV

JOINERY fitted expertise passed on through generations

For 50 years, the Fleurette Constructeur joinery teams have been dedicated to continuing traditions in order to offer elegance, robustness and a high-quality finish for our motorhomes.

As joinery is historically a Fleurette Constructeur's expertise, we take great care over the joinery work for our vehicles, bringing you unique settings and interiors, and continuing the leitmotiv of artisanal cabinetmaker Jean Lucas, who founded the brand in 1967.

Today, combining industrial performance, digital order processing and artisanal craftsmanship, the joinery team draws on its skills and a wide variety of processes, working together to relentlessly enrich the layouts of our motorhomes.

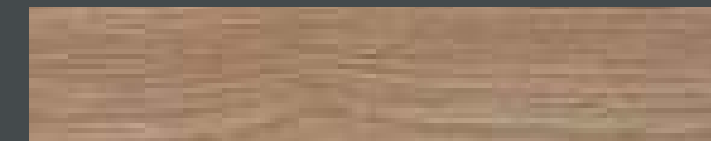


A design office dedicated to sophistication and elegance

Thanks to high-performance design software, our developers work every year to bring you new layouts and ingenious designs that reflect your lifestyle.



Pear Tree Woodwork (for Fleurette)



Cedar Woodwork (for Florium)



Elm Woodwork (optional extra for Florium Winchester only)

Discover all
the stages in the production of the
furniture in our vehicles

FLEURETTE

The ONLY assembly method of its kind in EUROPE, by Fleurette Constructeur

Drawing on its experience in vehicle assembly, and continually focused on producing the best equipment, Fleurette Constructeur has developed an exclusive procedure: Recovery System.



A recovery assembly system that is more resistant than end-to-end assembly, guaranteeing perfect waterproofing.

The roof and polyester rear superimposed without contact onto the sandwich panel create an effective thermal barrier.

Polyester skin on the roof, which retains its shape and is resistant to the impact of hail

The back side covers the roof and sides

Full-width unfolding storage area for optimized storage. Upholstered and heated for better insulation.

Reinforced extension frame in galvanized steel: designed to support large weights and optimize your towing capacity. Our water tanks are fitted to the middle of the chassis for better load distribution.



The hood is installed as a covering for the roof and sides

Wraparound panoramic wide-angle windscreen, increased visibility for your safety

Flush bay improving the thermal insulation and security of your vehicle (cannot be removed from the outside)

The bottoms of the cab are attached to the lateral panels. They are easy to repair in the garage.

Double-joint polyester gate guaranteeing perfect waterproofing of the storage area.



Watch our video about the production of our insulating linings

All the materials in contact with the exterior are rot-resistant and create a watertight shield that enables us to offer you a 5-year watertightness warranty, **including 3 years without follow-up inspection**. To ensure that this guarantee is as effective as possible during these 5 years, a watertightness check will be requested at the start of the 4th and 5th year.

SOLIDITY and increased resistance with optimized insulation

The structure of our vehicles guarantees a high level of production for optimum insulation, increased resistance and reinforced protection.



With its polyester coating under the chassis, it guarantees the underfloor watertightness of the vehicle



The insulating XPS Styrofoam (30 mm of Styrofoam in all of our walls and floors) has high thermal and acoustic insulating properties, water-resistance and renowned lightness.

The fibre composite/wood combination strengthens the structure of the walls and floor, combining the long-lasting properties of the composite with the exceptional solidity of solid wood.

Polyurethane strip

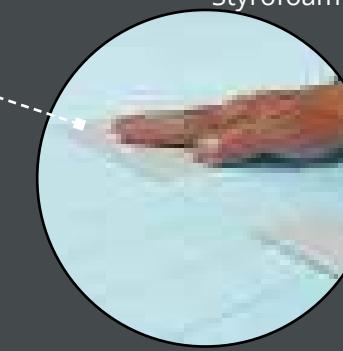
Polyester

Wooden strip

Styrofoam



Aluminium inserts in the panelling ensure the perfect stability of the structure and furniture (150 hard points on average).



FIAT CCS CHASSIS

because your safety is essential



- Designed and produced for motorhomes, and an indisputable market leader, the FIAT CCS chassis offers the ideal foundations for producing manoeuvrable, reliable and robust motorhomes.
- Anti-roll bar on the front and back for increased stability.
 - Special reinforced motorhome tyres.
 - Extra-wide rear track for better handling.
 - Chassis lowered by 15 cm to allow for the passage of fluids under the floor.



The FIAT CCS chassis is installed as standard on the Fleurette Migrateur/ Florium Baxter and Fleurette Magister/Florium Mayflower ranges.

- The range of Multijet Euro 6 engines from 130 CV to 180 CV offers increased performance thanks to an excellent weight, consumption and emission ratio.
- Throughout the range:
- LPEGR technology (Low Pressure Exhaust Gas Recirculation) for reduced emissions
 - GSI (Gear Shift Indicator) which prompts the driver to change gear and helps optimize driving.

	130 MULTIJET 2.3	150 MULTIJET 2.3	180 MULTIJET 2.3
Horsepower	130	150	180
Torque (Nm)	320	380	400
Turbine	Waste-Gate	Variable geometry	Variable geometry
Gearbox	6 gears	6 gears	6 gears
Comfort Matic gearbox	Option	Option	Option
Technology	LPEGR	LPEGR	LPEGR



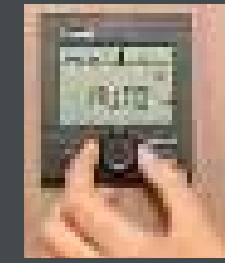
A top-of-the-range model, the innovative design of the AL-KO AMC CHASSIS offers increased security, better handling and unrivalled driving comfort. Your motorhome handles better thanks to a lower centre of gravity and optimized usable load.



COMFORT AND DESIGN

for your daily well-being

TOUCHSCREEN-CONTROLLED HEATING FOR YOUR MOTORHOME



- Touch screen-controlled heating for your motorhome Truma Combi Heating owes its success to the fact that it is compact, effective and reliable. It combines hot water and heating in a single piece of equipment and has for many years been the top-selling motorhome heating system on the market. Every year, Truma redevelops its systems to remain the most innovative brand in Germany.
- Operates on gas and electricity as an optional extra.
 - Operates on gas and electricity
 - Air and water are heated with 97% efficiency using 1800W electric resistance heating.
 - Collision sensor that cuts the gas in the event of an accident.
 - Exists in two systems, Combi 4 E (4000 W), Combi 6 E (6000 W). The Truma EH makes it possible to use the heating on 220V.

STUNNING FURNITURE

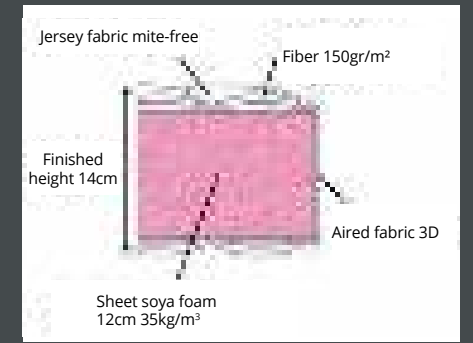
with spacious integrated storage solutions



LUXURY BEDDING

- Because “good sleep means good health”, we wanted to offer you maximum comfort for the 2019 collection.
- All of our central mattresses are made from 35kg/m2 density soy-based Evoluflex foam, combined with a slat base. Features:
- 12 cm highly durable foam panel
 - 150 g/m² hypoallergenic filling
 - anti-acarid jersey equipment on both sides of the bed
 - adapts to your morphology

To add a finishing touch of comfort, our vehicles with central beds come with a rug to make you feel even more at home.

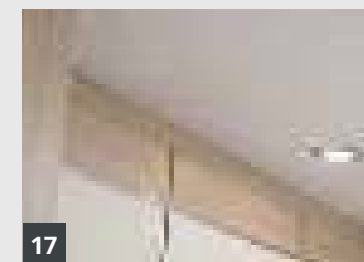
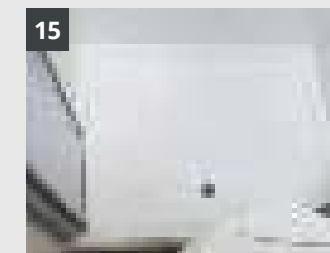
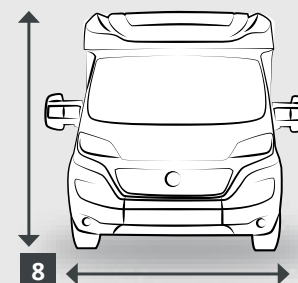
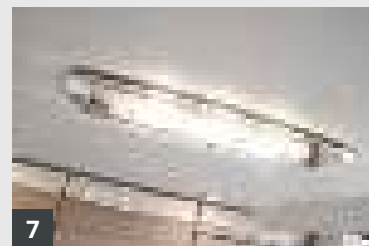
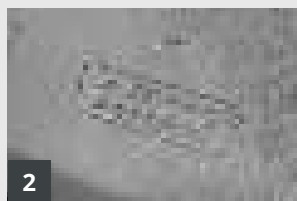


Low-profile FEATURES



FITTINGS

that leave nothing out



Combine **SAFE** and **PLEASURABLE** driving

- 1 - SPEED LIMITER & REGULATOR*
- 2 - DOUBLE AIRBAGS*
- 3 - CAB & LIVING AREA CENTRAL LOCKING WITH DUAL ANCHOR POINT
- 4 - SHORT WING-MIRROR ARMS for 60 LG and 64 LG

Carefully thought out, sophisticated **DESIGN**

- 5 - BRASS BATHROOM FITTINGS WITH CERAMIC CARTRIDGE
- 6 - BACKLIT SHOWER COLUMN WITH ADJUSTABLE FLOW
- 7 - 100% LED INTERIOR LIGHTING
- 8 - DIMENSIONS BAXTER AND MIGRATEUR : 2.85M HIGH X 2.30M WIDE
DIMENSIONS MAYFLOWER AND MAGISTER : 2.75M HIGH X 2.34M WIDE

FITTINGS designed to make everyday life easier

- 9 - ELEVATING ROOF FOR STORING ACCESSORIES
- 10 - HEATED AND INSULATED WATER TANKS
- 11 - OPTIONAL 5th V5 PLACE ON 70LD and 73LMS
- 12 - CENTRAL GLOVE COMPARTMENT*
- 13 - LATERAL EXTRACTION DIGITAL COOKER HOOD*

COMFORT designed for your well-being on board

- 14 - INSULATED, OPENING POLYESTER FOOTBOARD
- 15 - POLYESTER SHOWER CUBICLE
- 16 - CAB CARPETTING AS STANDARD
- 17 - INSULATING, ACOUSTIC AND THERMAL COVERING ON THE ROOF
- 18 - MP3, CD, USB AND BLUETOOTH RADIO WITH HANDS FREE KIT*
- 19 - CAB AIR CONDITIONING*
- 20 - FOCAL SPEAKERS*

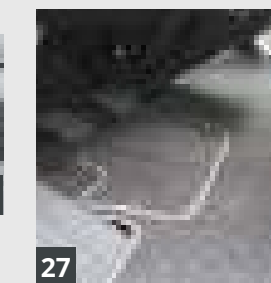
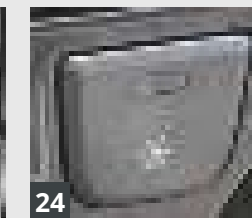
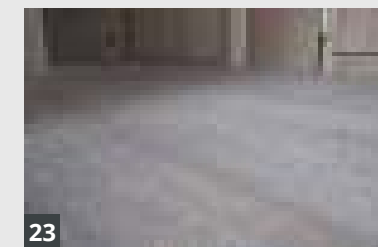
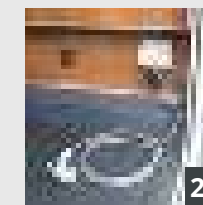
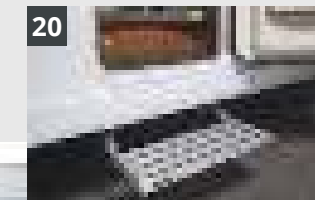
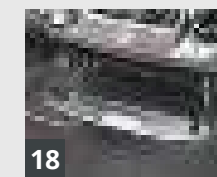
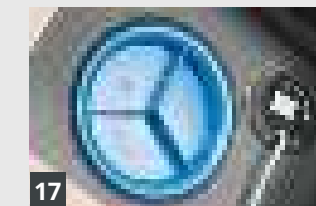
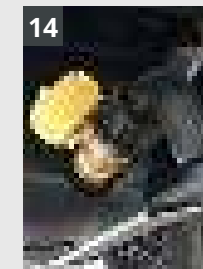
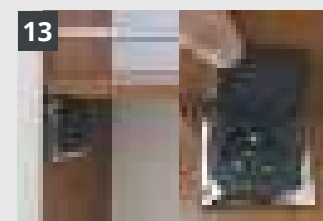
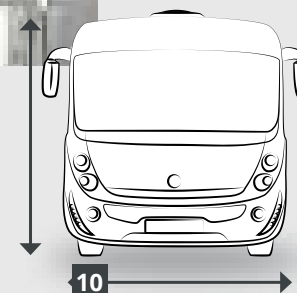
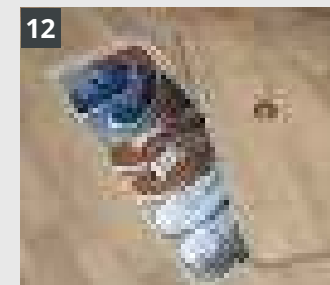
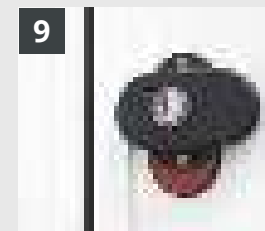
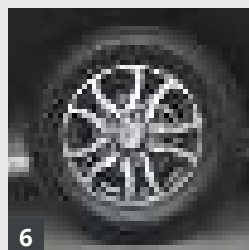
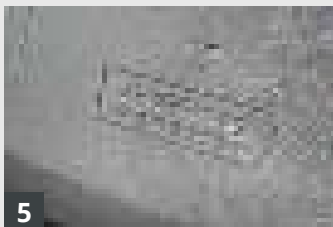
*Included in the Comfort Pack

A-CLASS EXTRAS



FITTINGS

that leave nothing out



Combine **SAFE** and **PLEASURABLE** driving

- 1 - CAB & LIVING AREA CENTRAL LOCKING WITH DUAL ANCHOR POINT
- 2 - AL-KO CHASSIS AS STANDARD
- 3 - HEATED, ELECTRIC WING-MIRRORS
- 4 - SPEED LIMITER & REGULATOR
- 5 - DOUBLE AIRBAGS

Carefully thought out, sophisticated **DESIGN**

- 6 - ALLOY RIMS AS STANDARD
- 7 - 360° EFFECT PANORAMIC WINDSCREEN
- 8 - BACKLIT SHOWER COLUMN WITH ADJUSTABLE FLOW
- 9 - INTUITIVE STORAGE SPACE HANDLE
- 10 - EXTERIOR DIMENSIONS: 2.85M HIGH X 2.30M WIDE

FITTINGS designed to make everyday life easier

- 11 - RAISED, ILLUMINATED POLYESTER STORAGE SPACE
- 12 - INSULATED AND HEATED DOUBLE FLOOR WITH INBUILT STORAGE SPACE
- 13 - 220V PLUG IN BATHROOM AS STANDARD
- 14 - ELECTRIC WASTE WATER DRAINAGE VALVE
- 15 - DIGITAL COOKER HOOD WITH LATERAL EXTRACTION
- 16 - ELEVATING ROOF FOR STORING ACCESSORIES
- 17 - HEATED AND INSULATED WATER TANKS
- 18 - CENTRAL GLOVE COMPARTMENT

COMFORT designed for your well-being on board

- 19 - FLUSH WINDOWS WITH DAMPERS
- 20 - RETRACTABLE ELECTRIC STEP
- 21 - OUTDOOR SHOWER AND PLUG AS STANDARD
- 22 - MP3, CD, USB AND BLUETOOTH RADIO WITH HANDS FREE KIT
- 23 - GERFLOR FLOOR COVERING (ACOUSTIC PROPERTIES, UNDERFOOT COMFORT, WATERTIGHTNESS, ANTI-SCRATCH VARNISH, ENVIRONMENTALLY-FRIENDLY)
- 24 - CAB AIR CONDITIONING
- 25 - FOCAL SPEAKERS
- 26 - POLYESTER SHOWER CUBICLE
- 27 - CAB CARPETTING AS STANDARD

THE FREEDOM TO TRAVEL

in complete serenity



— FLEURETTE —



Migrateur

Range

WIDTH : 2,23 m / HEIGHT : 2,65 m / GVW : 3500 Kg



METALLIC EDITION PACK:

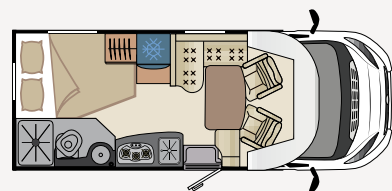
Gain increased exclusivity, sophistication and comfort with the Metallic Grey Edition pack:

- Metallic grey cab
- LED day running lights
- Special cab exterior décor

60LG

LEFT-HAND SIDE BED

NET WEIGHT*:2814 kg
LENGTH:5m99

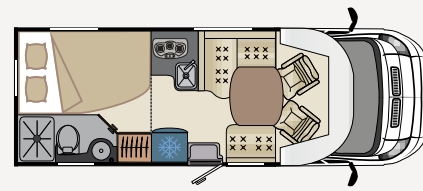


x4
 x3
 x4

64LG

LEFT-HAND SIDE BED

NET WEIGHT*:2885 kg
LENGTH:6m47



x4
 x3
 x5

* With driver, 90% clean water, 90% gas, 90% diesel and equipment.



Migrateur

Range
the ultra-compact low-profile

Compact outside appearance, reduced height, contained width, thinner wing mirror arm... go everywhere with your MIGRATEUR low-profile, drive through the narrowest alleys and round mountain hairpins.



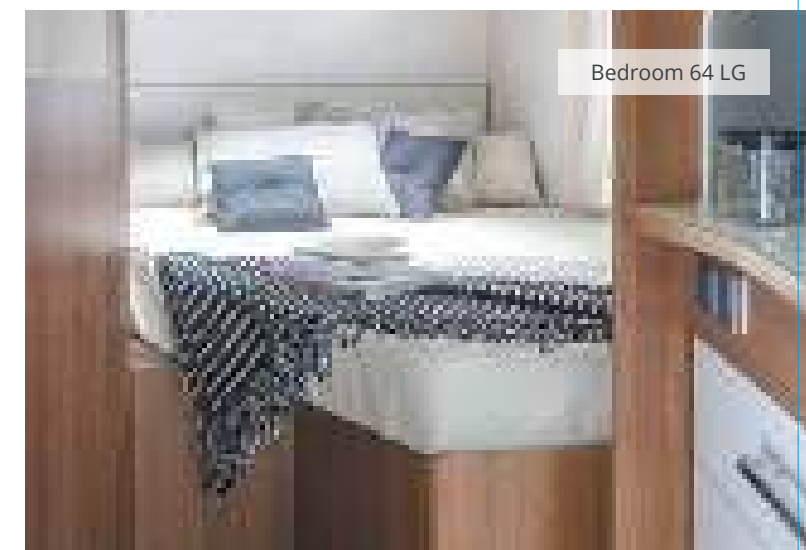
64 LG living room - Beige/Tenerife upholstery



Kitchen 64 LG



64 LG toilet and shower



Bedroom 64 LG

Magister

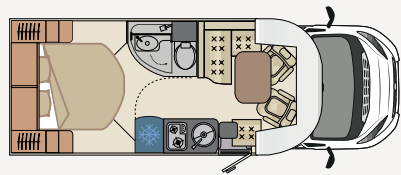
Range

WIDTH : 2,34 m / HEIGHT : 2,75 m / GVW : 3500 Kg

65LCX

CENTRAL BED

NET WEIGHT*: 2978 kg
LENGTH: 6m50

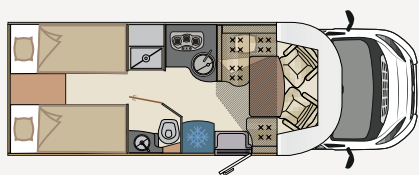


4 people x4
3 toilets x3
4 dining seats x4

69LJG

TWIN BEDS GARAGE STORAGE SPACE +
OPTIONAL 1-BERTH ELECTRIC DROP-DOWN BED

NET WEIGHT*: 3069 kg
LENGTH: 6m97

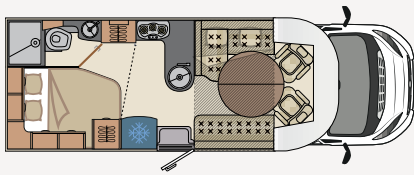


4 people x4
3/4 toilets x3/4 en option
5 dining seats x5

70LD

RIGHT-HAND SIDE BED MAXI LIVING
ROOM + ELECTRIC DROP-DOWN BED

NET WEIGHT*: 2997 kg
LENGTH: 6m97

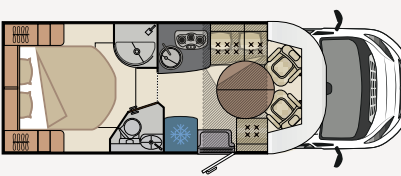


5 people x5
5 toilets x5
7 dining seats x7

70LMF

CENTRAL BED FACE-TO-FACE
BENCH SEAT

NET WEIGHT*: 3087 kg
LENGTH: 6m97

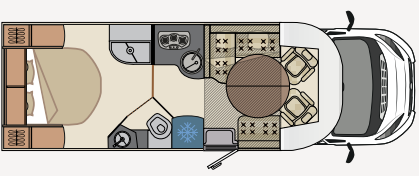


4 people x4
3/4 toilets x3/4 en option
5 dining seats x5

73LMS

CENTRAL BED WITH STORAGE SPACE +
ELECTRIC DROP-DOWN BED

NET WEIGHT*: 3076 kg
LENGTH: 7m38

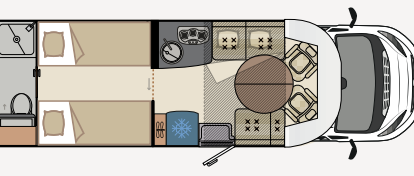


5 people x5
5 toilets x5
5 dining seats x5

73LJF

FULL-WIDTH BATHROOM
AND TWIN BEDS

NET WEIGHT*: 3040 kg
LENGTH: 7m38

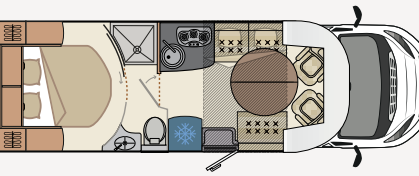


4 people x4
4 toilets x4
5 dining seats x5

74LMF

CENTRAL BED + FACE-TO-FACE BENCH
SEAT + ELECTRIC DROP-DOWN BED

NET WEIGHT*: 3111 kg
LENGTH: 7m38



4 people x4
4 toilets x4
5 dining seats x5

* With driver, 90% clean water, 90% gas, 90% diesel and equipment.



Magister

Range

The ultra-spacious low-profile

Spacious living room, comfortable bedding, clever storage, attention to detail, the Magister low-profile offers high-quality interiors perfectly adapted to your travelling needs in all terrains.



73 LJF living room - Chocolate ivory Emocuir leather upholstery



Kitchen 73 LJF



73 LJF: electric drop-down bed



73 LJF: bedroom with twin beds



Kitchen 70 LD



Living room 70 LD : Grey/Gotland upholstery



Bathroom 70 LD



Magister 70 LD



Storage area 69 LJG



Kitchen 69 LJG



Bedroom 69 LJG

Discover

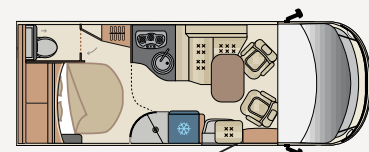
Range

WIDTH : 2,30 m / HEIGHT : 2,85 m / GVW : 3500 Kg

65LMC

CENTRAL BED

NET WEIGHT*: 2969 kg
LENGTH: 6m59

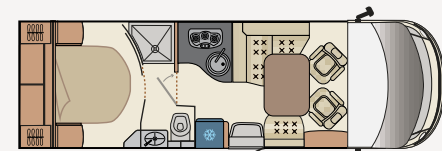


x4
 x4
 x5

74LMS

CENTRAL BED

NET WEIGHT*: 3170 kg
LENGTH: 7m46

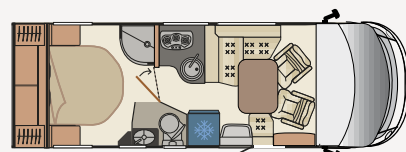


x4
 x4
 x5

70LMS

CENTRAL BED

NET WEIGHT*: 3065 kg
LENGTH: 7m07

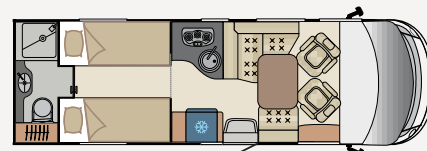


x4
 x4
 x5

74LJT

FULL-WIDTH BATHROOM AND TWIN BEDS

NET WEIGHT*: 3160 kg
LENGTH: 7m46

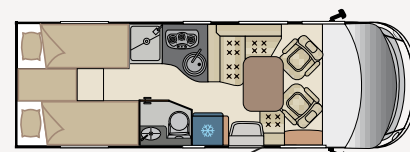


x3/4
en option
 x4
 x5

70LJG

TWIN BEDS GARAGE STORAGE AREA

NET WEIGHT*: 3101 kg
LENGTH: 7m07

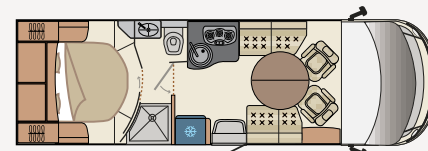


x4
 x4
 x5

75LMF

CENTRAL BED FACE-TO-FACE BENCH SEAT

NET WEIGHT*: 3138 kg
LENGTH: 7m46

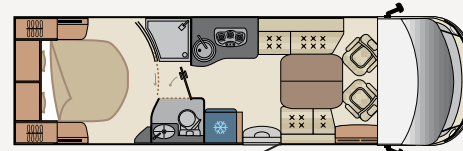


x4
 x4
 x6

80LMF

CENTRAL BED FACE-TO-FACE BENCH SEAT (HEAVY VEHICLES)

NET WEIGHT*: 3569 kg
LENGTH: 7m95



x4
 x4
 x7

NEW

* With driver, 90% clean water, 90% gas, 90% diesel and equipment. With clean water drain valve limiting capacity to 20L for driving.



Discover

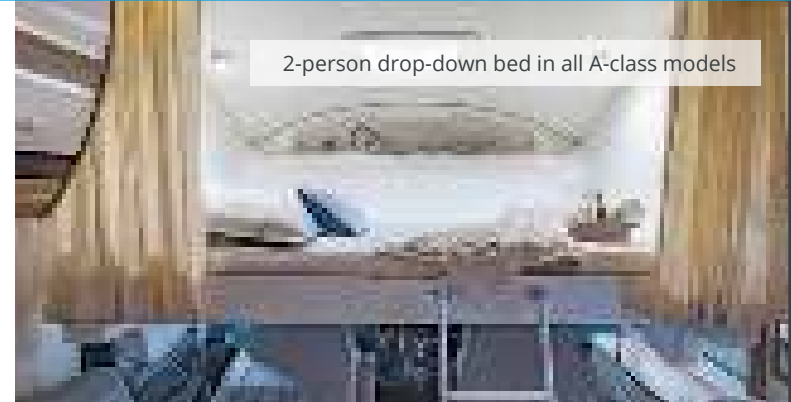
Range

The ultra-spacious low-profile

French luxury with a prestigious A-Class offering top-of-the-range features. Alko chassis, double floor, 100% polyester bodywork, fully-equipped: nothing has been left out from these top-of-the-range motorhomes.



70 LMS interior: Grey/Gotland upholstery



2-person drop-down bed in all A-class models



Shower 70 LMS



Bedroom 75 LMF and 80 LMF

74 LMS living room: Taupe ivory Emocuir leather upholstery



Shower 74 LMS



Bathroom 74 LMS



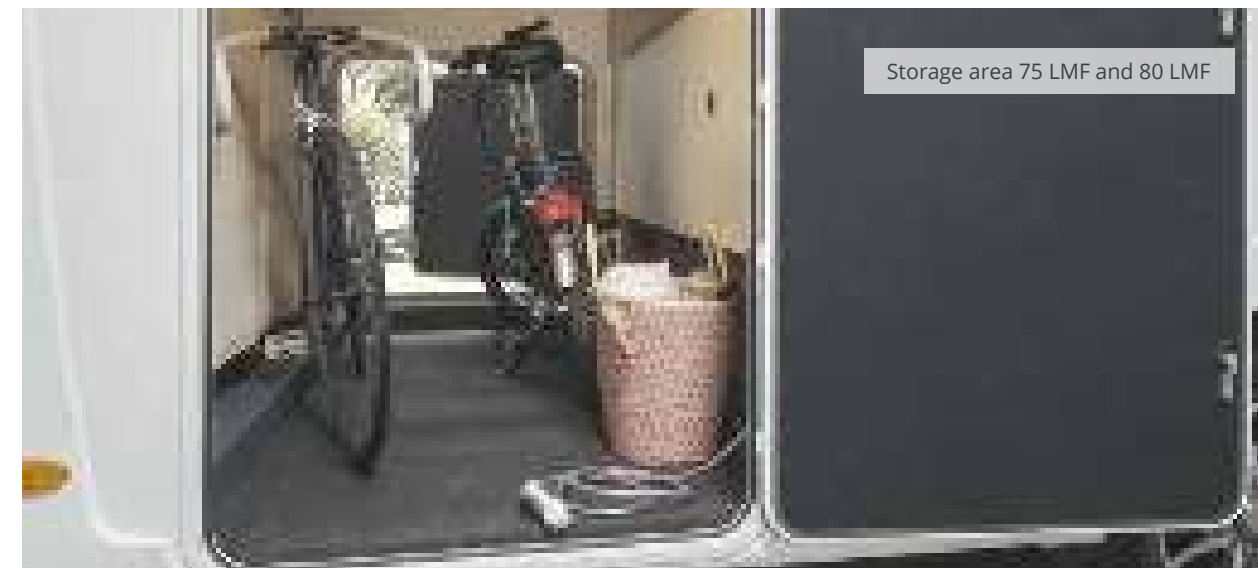
Kitchen 80 LMF



80 LMF living room - Chocolate ivory Emocuir leather upholstery



Storage area 75 LMF and 80 LMF



TRAVEL IN FIRST CLASS

— FLORIUM —



BAXTER RANGE

WIDTH : 2,23 m / HEIGHT : 2,65 m / GVW : 3500 Kg



GOLD AND BLACK PACK

Gain increased exclusivity, sophistication and comfort with the Gold and Black pack:

- Champagne cab
- LED day running lights
- Special cab exterior décor
- Varnished black grill

60LG
LEFT-HAND SIDE BED

NET WEIGHT*:2814 kg
LENGTH:5m99

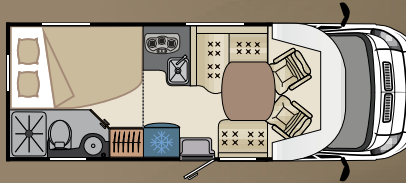


👤 x4 | 🚰 x3 | 🍴🍷 x4

* With driver, 90% clean water, 90% gas, 90% diesel and equipment.

64LG
LEFT-HAND SIDE BED

NET WEIGHT*:2885 kg
LENGTH:6m47



👤 x4 | 🚰 x3 | 🍴🍷 x5



60 LG bedroom: Beige/Taupe upholstery

BAXTER RANGE

THE COMPACT, FASHIONABLE
LOW-PROFILE

The Baxter low-profile range combines compactness and modularity in its layouts and arrangements, in a contemporary, luxury setting, so you can enjoy your holidays at your own pace, as you wish, in complete freedom.



60 LG bedroom: Beige/Taupe upholstery



150 litre fridge with 25 litre freezer compartment



Kitchen 60 LG



Bedroom 60 LG

MAYFLOWER RANGE

WIDTH : 2,34 m / HEIGHT : 2,75 m / GVW : 3500 Kg

65LCX CENTRAL BED

NET WEIGHT*: 2978 kg
LENGTH: 6m50



👤 x4 | 📱 x3 | 🍴🍷 x4

69LJG

TWIN BEDS GARAGE STORAGE SPACE +
OPTIONAL 1-BERTH ELECTRIC DROP-DOWN BED

NET WEIGHT*: 3069 kg
LENGTH: 6m97

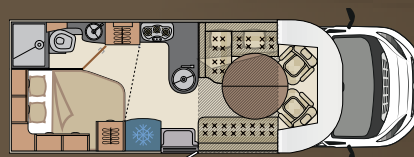


👤 x4 | 📱 x3/4
en option | 🍴🍷 x5

70LD

RIGHT-HAND SIDE BED MAXI LIVING
ROOM + ELECTRIC DROP-DOWN BED

NET WEIGHT*: 2997 kg
LENGTH: 6m97

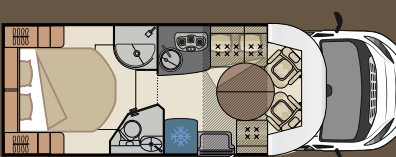


👤 x5 | 📱 x5 | 🍴🍷 x7

70LMF CENTRAL BED FACE-TO-FACE BENCH SEAT

NEW

NET WEIGHT*: 3087 kg
LENGTH: 6m97

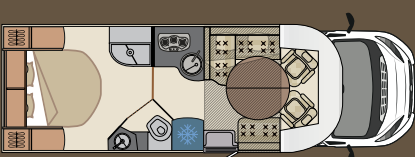


👤 x3 | 📱 x3/4
en option | 🍴🍷 x5

73LMS

CENTRAL BED WITH STORAGE SPACE +
ELECTRIC DROP-DOWN BED

NET WEIGHT*: 3076 kg
LENGTH: 7m38

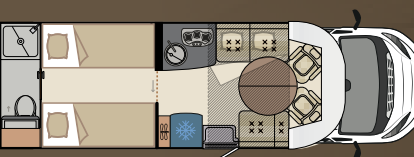


👤 x5 | 📱 x5 | 🍴🍷 x5

73LJF

FULL-WIDTH BATHROOM
AND TWIN BEDS

NET WEIGHT*: 3040 kg
LENGTH: 7m38



👤 x4 | 📱 x4 | 🍴🍷 x5

74LMF

CENTRAL BED + FACE-TO-FACE BENCH
SEAT + ELECTRIC DROP-DOWN BED

NET WEIGHT*: 3111 kg
LENGTH: 7m38



👤 x4 | 📱 x4 | 🍴🍷 x5

* With driver, 90% clean water, 90% gas, 90% diesel and equipment.



MAYFLOWER RANGE

THE HAUTE-COUTURE
LOW-PROFILE

Bedroom 73 LMS



Entrance 73 LMS



Drop-down bed 70 LD



Bathroom 70 LD



Storage area 73 LMS



Mayflower low-profiles have a well-established reputation. Elegant, well-designed and functional, they combine an excellent sense of style and technical skill. Construction, equipment, attention to detail, living spaces and storage, a magical combinations that offers you an alternate way of life as a happy motorhome-owner, full of adventure... and yet avant-garde and with maximum comfort!



Gold & Black cab optional extra

Bathroom 65 LCX



Storage area 65 LCX



Bedroom 65 LCX



65 LCX Living room : Grey/Gotland upholstery

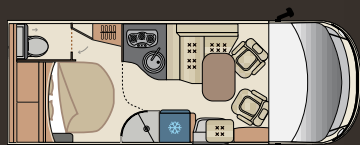


WINCESTER RANGE

WIDTH : 2,30 m / HEIGHT : 2,85 m / GVW : 3500 Kg

65LMC CENTRAL BED

NET WEIGHT*: 2969 kg
LENGTH: 6m59



x4
 x4
 x5

74LMS CENTRAL BED

NET WEIGHT*: 3170 kg
LENGTH: 7m46



x4
 x4
 x5

70LMS CENTRAL BED

NET WEIGHT*: 3065 kg
LENGTH: 7m07



x4
 x4
 x5

74LJT FULL-WIDTH BATHROOM AND TWIN BEDS

NET WEIGHT*: 3160 kg
LENGTH: 7m46



x3/4
en option
 x4
 x5

70LJG TWIN BEDS GARAGE STORAGE AREA

NET WEIGHT*: 3101 kg
LENGTH: 7m07



x4
 x4
 x5

75LMF CENTRAL BED FACE-TO-FACE BENCH SEAT

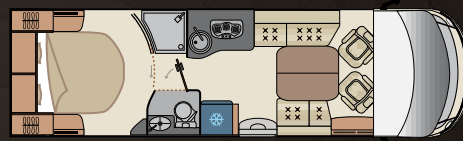
NET WEIGHT*: 3138 kg
LENGTH: 7m46



x4
 x4
 x6

80LMF CENTRAL BED FACE-TO-FACE BENCH SEAT (HEAVY VEHICLES)

NET WEIGHT*: 3569 kg
LENGTH: 7m95



x4
 x4
 x7

* With driver, 90% clean water, 90% gas, 90% diesel and equipment. With clean water drain valve limiting capacity to 20L for driving.



WINCESTER RANGE

PREMIUM A-CLASS

Sophistication, comfort and elegance... a combination that continues to delight fans of the Florium range's flagship model. Streamlined exterior, nautical-themed interior design and first-class equipment as standard... enjoy top-class features and enter the privileged universe of lovers of first-class travel.



74 LJT living room: Ivory Emocuir leather upholstery



Bedroom and Bathroom 65 LMC



Kitchen 65 LMC



Bedroom 70 LJG

BLACK PEARL SERIES

2019 COLLECTION **LIMITED EDITION**

available for Mayflower 70 LMF and 74 LMF and Winchester 75 LMF



Mayflower 70 LMF



Mayflower 70 LMF

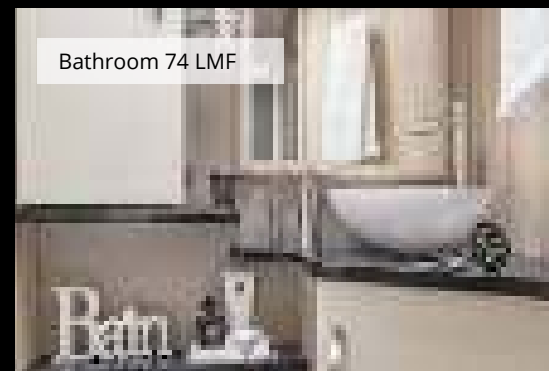


Mayflower 74 LMF

Step inside these three models to discover our Florium-exclusive pack. Within this chic, modern atmosphere, you can enjoy a high quality finish that is bold yet comfortable. The Black Pearl finish features premium fittings and stands out with its nautical-inspired finish and luxury look, which make you feel like you are travelling in first class.



Living room 74 LMF



Bathroom 74 LMF

Limited edition fittings:

- Black alloy rims
- Two-tone Emocuir leather upholstery
- Ivory Black interior style
- Black headlight rims, spoiler and grill
- Combi 6 EH heating (electric and gas)
- Black trim finish
- Black Pearl silkscreen print



Winchester 75 LMF



Winchester 75 LMF



Kitchen Winchester 75 LMF

BLACK PEARL



Living room Winchester 75 LMF



Limited edition fittings:

- Two-tone Emocuir leather upholstery
- Ivory Black style
- Combi 6 EH heating (electric and gas)
- Black Pearl silkscreen print
- Parking camera with LCD Rear view monitor
- Revêtement noir orné

SPECS

DIMENSIONS AND WEIGHT	LOW - PROFILES		A - CLASSES							A - CLASSES						
	MIGRATEUR / BAXTER		MAGISTER / MAYFLOWER							DISCOVER / WINCESTER						
	60 LG	64 LG	65 LCX	69 LJG	70 LD	70 LMF	73 LMS	73 LJF	74LMF	65 LMC	70 LMS	70 LJG	74 LMS	74LJT	75LMF	80 LMF
Overall Length (metres)* +/- 5 %	5,99	6,47	6,50	6,97	6,97	6,97	7,38	7,38	7,38	6,59	7,07	7,07	7,46	7,46	7,46	7,95
Overall width (metres)* without rear view mirrors opened +/- 5 %	2,23	2,23	2,34	2,34	2,34	2,34	2,34	2,34	2,34	2,30	2,30	2,30	2,30	2,30	2,30	2,30
Overall Height (metres) +/- 5 %	2,65	2,65	2,75	2,75	2,75	2,75	2,75	2,75	2,75	2,85	2,85	2,85	2,85	2,85	2,85	2,85
MTPLM (Gross vehicle weight, kg)	3500	3500	3500	3500	3500	3500	3500	3500	3500	3500	3500	3500	3500	3500	3500	4400
MIRO (Unladen weight, kg)* +/- 5 %	2814	2885	2978	3069	2997	3087	3076	3040	3111	2969	3065	3101	3170	3160	3138	3569
Travel places	4	4	4	4	5	4	5	4	4	4	4	4	4	4 ou 3 (selon les options)	4	4
Eating places	4	5	4	4	7	5	5	5	5	5	5	5	5	5	6	7
Sleeping places	3	3	3	3 (S) /4 (O)	5	3 (S) /4 (O)	5	4	4	4	4	4	4	4	4	4

* Weight and measures subjected to tolerance of +/-5 %

SERVICES AND AUTONOMY	MIGRATEUR / BAXTER		MAGISTER / MAYFLOWER							DISCOVER / WINCESTER						
	60 LG	64 LG	65 LCX	69 LJG	70 LD	70 LMF	73 LMS	73 LJF	74LMF	65 LMC	70 LMS	70 LJG	74 LMS	74LJT	75LMF	80 LMF
Gas locker for 1 bottle 13 KG	S	-	-	-	-	-	-	-	-	-	-	-	-	-	-	-
Gas locker for 2 bottles 13 KG + 6KG	-	S	-	-	-	-	-	-	-	-	-	-	-	-	-	-
Gas locker for 2 bottles 2 X 13 KG	-	-	S	S	S	S	S	S	S	S	S	S	S	S	S	S
DUO CONTROL CS enables you to travel while using the gas heating	O	O	O	O	O	O	O	O	O	S	S	S	S	S	S	S
Fresh water frostprotected (L)	120	120	120	120	120/20*	120	120/20*	120	120/20*	205/20*	205/20*	205/20*	205/20*	205/20*	205/20*	205/20*
Waste water frostprotected (L)	119	119	119	119	119	119	119	119	119	125	125	125	125	125	125	125
Manual waste water drainage system	S	S	S	S	S	S	S	S	S	-	-	-	-	-	-	-
Electrical waste water drainage system	-	-	-	-	-	-	-	-	-	S	S	S	S	S	S	S
Truma Combi4 with 10 L boiler	S	S	S	S	S	S	-	-	-	-	-	-	-	-	-	-
Truma Combi6 with 10 L boiler	-	-	-	-	-	-	S	S	S Hors Mayflower Black Pearl	S	S	S	S	S (S) sur Discover (-) sur Winchester	-	-
Truma Combi EH with 10 L boiler	O	O	O	O	O	(O) sur Mag/ May (S) sur Black Pearl	O	O	(O) sur Mag/ May (S) sur Black Pearl	O	O	O	O	O (O) sur Discover (S) sur Winchester Black Pearl	-	-
ALDE central heating	-	-	-	-	-	-	-	-	-	-	O	O	O	O	O	S
Pre-wiring for TV and loud speakers	S	S	S	S	S	S	S	S	S	S	S	S	S	S	S	S
Pre-wiring for reversing camera	S	S	S	S	S	S	S	S	S	S	S	S	S	S	S	S
220 V socket - 12 V socket - TV socket	S	S	S	S	S	S	S	S	S	S	S	S	S	S	S	S
100 Ah semi stationary auxillary battery	1	1	1	1	1	1	1	1	1	1	1	1	1	1	1	1
Charger transformer with separation coupler	S	S	S	S	S	S	S	S	S	S	S	S	S	S	S	S
LCD control panel (water, battery, inside and outside temperature)	S	S	S	S	S	S	S	S	S	S	S	S	S	S	S	S
LED lighting above the cell door	S	S	S	S	S	S	S	S	S	S	S	S	S	S	S	S
USB port Bedroom	O	O	O	O	O	O	O	O	O	O	S	O	S	O	S	S

* Vanne de détarage 20l : Afin de respecter la charge utile en ordre de marche

Fleurette Constructeur reserves the right to modify the characteristics and the equipments of its products, at any time, without advance notice

(S) = Standard/ (O) = Option / (-) = Not available

STANDARD BASE	LOW - PROFILES		A - CLASSES							A - CLASSES						
	MIGRATEUR / BAXTER		MAGISTER / MAYFLOWER							DISCOVER / WINCESTER						
	60 LG	64 LG	65 LCX	69 LJG	70 LD	70 LMF	73 LMS	73 LJF	74LMF	65 LMC	70 LMS	70 LJG	74 LMS	74LJT	75LMF	80 LMF
FIAT	S	S	S	S	S	S	S	S	S	S	S	S	S	S	S	S
AL-KO chassis	-	-	-	-	-	-	-	-	-	S	S	S	S	S	S	S
Cylinders (cm3)	2,3	2,3	2,3	2,3	2,3	2,3	2,3	2,3	2,3	2,3	2,3	2,3	2,3	2,3	2,3	2,3
Tax power (HP) - France ONLY	8	8	8	8	8	8	8	8	8	8	8	8	8	8	8	8
Maximum power (Kw CEE)	96	96	96	96	96	96	96	96	96	96	96	96	96	96	96	109
DIN power (H.P.)	130	130	130	130	130	130	130	130	130	130	130	130	130	130	130	150
Maximum torque (Nm)	320	320	320	320	320	320	320	320	320	320	320	320	320	320	320	380
Total admissible vehicule weight (Kg)	5500	5500	5500	5500	5500	5500	5500	5500	5500	5500	5500	5500	5500	5500	5500	6000
Wheelbase (mm)	3450	3800	4035	4035	4035	4035	4035	4035	4035	3450	4035	4035	4300	4300	4300	4675
Front overhang (mm)	948	948	948	948	948	948	948	948	948	1028	1028	1028	1028	1028	1028	1028
Back overhang (mm)	1590	1728	1534	1989	1989	1989	2399	2399	2399	2127	2174	2174	2259	2259	2259	2244
Fuel tank capacity (L)	90	90	90	90	90	90	90	90	90	90	90	90	90	90	90	90
Radiator grill and spoiler black lacquered (exclusive Black Pearl)	-	-	-	-	-	(-) sur Magister (S) sur Mayflower Black Pearl	-	-	(-) sur Magister (S) sur Mayflower Black Pearl	-	-	-	-	-	-	-
Gearbox (number of gears)	6	6	6	6	6	6	6	6	6	6	6	6	6	6	6	6
Speed regulator and cruise control	O	O	O	O	O	O	O	O	O	S	S	S	S	S	S	S
Cab air conditioning	S	S	S	S	S	S	S	S	S	S	S	S	S	S	S	S
Electric windows	S	S	S	S	S	S	S	S	S	S	S	S	S	S	S	S
Electric side mirrors	O	O	O	O	O	O	O	O	O	S	S	S	S	S	S	S
Heated side mirrors	O	O	O	O	O	O	O	O	O	S	S	S	S	S	S	S
Tinted windscreen and windows	S	S	S	S	S	S	S	S	S	S	S	S	S	S	S	S
Remote controlled central locking (including cell door)	S	S	S	S	S	S	S	S	S	S	S	S	S	S	S	S
Driver's airbag	S	S	S	S	S	S	S	S	S	S	S	S	S	S	S	S
Passenger's airbag	O	O	O	O	O	O	O	O	O	S	S	S	S	S	S	S
SRA immobiliser system	S	S	S	S	S	S	S	S	S	S	S	S	S	S	S	S
ABS braking	S	S	S	S	S	S	S	S	S	S	S	S	S	S	S	S
Radio CD-MP3-USB Bluetooth	O	O	O	O	O	O	O	O	O	S	S	S	S	S	S	S
Focal loud speaker	O	O	O	O	O	O	O	O	O	S	S	S	S	S	S	S
Captain Chair swivelling driver's and passenger chair with 2 armrests	S	S	S	S	S	S	S	S	S	S	S	S	S	S	S	S
Cab seatcovers to match cabin trim	S	S	S	S	S	S	S	S	S	S	S	S	S	S	S	S
Fitted carpet in the cab	S	S	S	S	S	S	S	S	S	S	S	S	S	S	S	S
Daytime LED road lighting	O	O	O	O	O	O	O	O	O	S	S	S	S	S	S	S
Puncture repair kit	S	S	S	S	S	S	S	S	S	S	S	S	S	S	S	S
Alloy wheels	O	O	O	O	O	(O) sur Magister (S) sur Mayflower Black Pearl	O	O	(O) sur Magister (S) sur Mayflower Black Pearl	S	S	S	S	S	S	S

Fleurette Constructeur reserves the right to modify the characteristics and the equipments of its products, at any time, without advance notice

(S) = Standard/ (O) = Option / (-) = Not available

Fleurette Constructeur reserves the right to modify the characteristics and the equipments of its products, at any time, without advance notice (S) = Standard/ (O) = Option / (-) = Not available

Fleurette Constructeur reserves the right to modify the characteristics and the equipments of its products, at any time, without advance notice (S) = Standard/ (O) = Option / (-) = Not available

CUSTOMIZING
YOUR INTERIOR
HAS NEVER BEEN SO EASY!


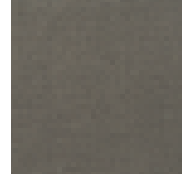





Because your second home should be as comfortable as your first, we offer you resolutely modern and fashionable style, placing your comfort first.

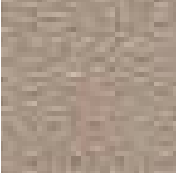
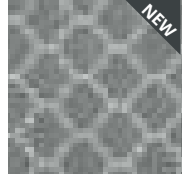



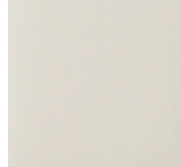
By choosing the fabric for your bench seats and cushions, you can create a cocooning atmosphere, in your style.

30 POSSIBLE COMBINATIONS,
FOR A STYLE THAT RESEMBLES YOU,
ALWAYS WITH CLASS!

1 CHOOSE THE SEATING AND CUSHION FABRIC

	Pepper		Taupe		Grey
	Beige		Hazel		

2 CHOOSE THE SEAT BACK FABRIC

	Tenerife		Gotland		Pepper
	Taupe		Hazel		Beige <i>(not compatible with the Beige seat)</i>

CREATE YOUR UNIQUE STYLE!

OVER TO YOU!



BEIGE & TENERIFE



TAUPE & BEIGE

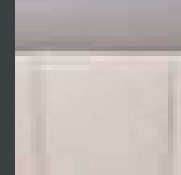
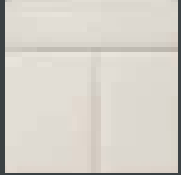
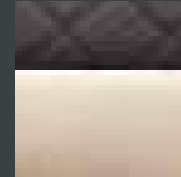



GREY & GOTLAND



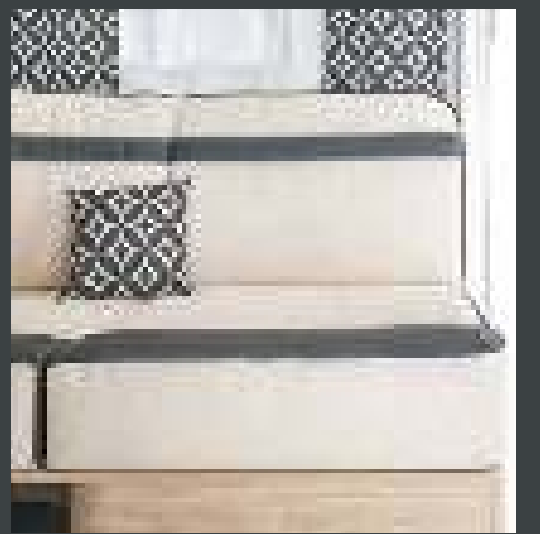
PEPPER & HAZEL

YOU CAN ALSO CHOOSE LEATHER
FOR YOUR LIVING ROOM*

Ivory-Taupe Emocuir		Ivory Emocuir	
Chocolate Emocuir		Ivory 100% full-grain leather	

*option

BLACK PEARL
EDITION
UPHOLSTERY



CHOOSE THE **MOTORHOME** THAT RESEMBLES YOU

COMPACT LOW-PROFILES

HxL : 2,65 M x 2,23 M

	FLEURETTE MIGRATEUR	FLORIUM BAXTER	FLEURETTE MAGISTER	FLORIUM MAYFLOWER
≤ 6 M	60 LG P. 18 / P.36 5,99 m			
≤ 6,50 M	64 LG P. 18 / P.36 6,47 m		65 LCX P. 22 / P.44 6,50 m	
≤ 7,00 M			69 LJG Electric drop-down bed (optional extra) P. 22 / P.44 6,97 m	
			70 LD 5 places P. 22 / P.44 6,97 m	
			70 LMF Black Pearl Ed. Electric drop-down bed (optional extra) P. 22 / P.44 / P.50 6,97 m	
≤ 7,50 M			73 LMS 5 seats P. 22 / P.44 7,38 m	
			73 LJF P. 22 / P.44 7,38m	
			74 LMF Black Pearl Ed. P. 22 / P.44 / P.50 7,38 m	

SPACIOUS LOW-PROFILES

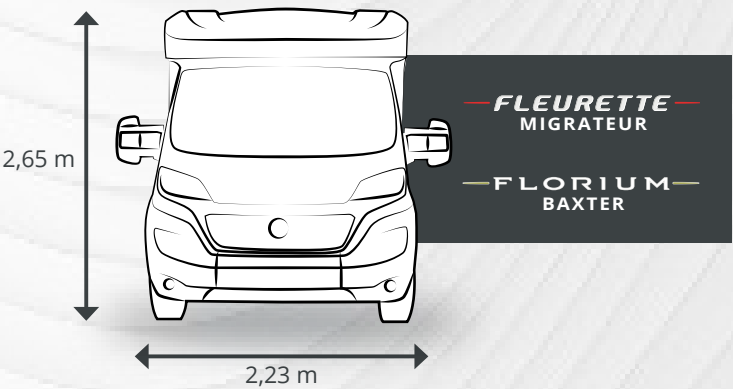
HxL : 2,75 M x 2,34 M

PREMIUM A-CLASSES

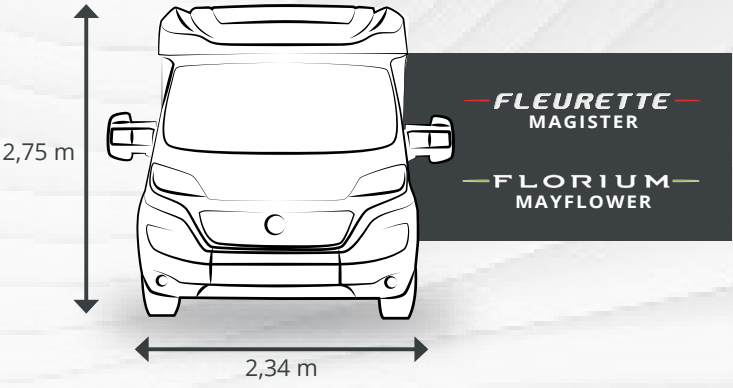
HxL : 2,85 M x 2,30 M

	FLEURETTE DISCOVER	FLORIUM WINCESTER
≤ 6,70 M	65 LMC P. 28 / P.46 6,59 m	
≤ 7,10 M	70 LJG P. 28 / P.46 7,07 m	
	70 LMS P. 28 / P.46 7,07 m	
≤ 7,50 M	74 LJT P. 28 / P.46 7,46 m	
	74 LMS P. 28 / P.46 7,46 m	
	75 LMF Black Pearl Ed. P. 28 / P.46 / P.50 7,46 m	
≤ 8 M POIDS LOURD	80 LMF P. 28 / P.46 7,95 m	

COMPACT LOW-PROFILES



SPACIOUS LOW-PROFILES



PREMIUM A-CLASSES

