



SWIFT

# CONQUEROR



LOVE LIFE  
LOVE SWIFT







Following the success of its return last season, Conqueror has gone even further to ensure that it remains at the top of its game for single axle caravan luxury. With three popular layouts to choose from, the range sees a full external redesign, giving it a sleek silhouette for a distinctive look.

# CONTENTS

**PG04** HOME FROM HOME

**PG06** PRACTICALITY

**PG08** STYLE AND COMFORT

**PG10** CONQUEROR LOOKS

**PG12** FABRIC OPTIONS

**PG14** SMART CONSTRUCTION



# 04 HOME FROM HOME



CLICK HERE FOR A FULL FEATURE LIST

[www.swiftgroup.co.uk/conqueror](http://www.swiftgroup.co.uk/conqueror)



## CONQUEROR COMFORT

A **NEW** lighter woodgrain alongside cream high-gloss lockers and atmospheric lighting emphasises Conqueror's premium identity. Natural light filtering through the front panoramic sunroof brings the outside in, while the Alde radiator central and water heating maintains a comfortable environment whatever the weather.

- 01.** Effortlessly chic Zinc soft furnishing scheme for a refined setting
- 02.** Beech slat seat and bed bases with sprung hinged tops and ample storage
- 03.** Useful front chest with soft-close drawer, concealed drawer and slide out extending top
- 04.** Upper front corner opening lockers for extra storage
- 05.** Contoured cushioning and sumptuous fabrics for increased comfort
- 06.** Panoramic front sunroof with integrated curved blind, recessed lighting and speakers
- 07.** Luxury full-width twin-track curtains accenting the front centre windows
- 08.** Control and monitor onboard systems with the 7" LCD Swift Command touchscreen panel

05



# 06 PRACTICALITY



CLICK HERE FOR A FULL FEATURE LIST

[www.swiftgroup.co.uk/conqueror](http://www.swiftgroup.co.uk/conqueror)



## CONQUEROR PRACTICALITY

- 01.** Tall slimline dual-hinged Dometic (Series 10) 133 litre fridge with removable freezer compartment and **NEW** salad crisper lid
- 02.** **NEW** ventilated flatbed microwave oven with digital controls
- 03.** **NEW** Thetford thermostatic oven and grill with oven light, plus three-burner gas hob and one electric hot plate. Hob features **NEW** cast iron frets and a glass lid with auto gas shut-off functionality
- 04.** Domestic style kitchen with soft-close drawers and doors
- 05.** Three-speed, two-way omnivent roof fan in kitchen area to extract cooking smells or pull in fresh air
- 06.** Adjustable under locker LED spotlights with USB points





CLICK HERE FOR A FULL FEATURE LIST

[www.swiftgroup.co.uk/conqueror](http://www.swiftgroup.co.uk/conqueror)



### CONQUEROR STYLE AND SUBSTANCE

- 01.** Exclusive Duvalay Duvalite Apollo Luxe mattress with Freshtec for a great night's sleep\*
- 02.** LED lighting and sumptuous full height, deep padded headboard\*
- 03.** Fixed beds with aluminium bed frames to maximise strength and storage space
- 04.** Contemporary fully-fitted washroom with enhanced lighting and stylish vanity unit
- 05.** Ecocamel Jetstorm shower head for a powerful shower that uses less water
- 06.** Folding washroom ceiling-mounted garment hanging rail^

\*Fixed beds  
^Model specific





CLICK HERE FOR A LAYOUTS

[www.swiftgroup.co.uk/conqueror](http://www.swiftgroup.co.uk/conqueror)



### CONQUEROR 7'6" WIDE



CLICK HERE  
TO CHOOSE  
YOUR LAYOUT

[swiftgroup.co.uk/conqueror/technical](http://swiftgroup.co.uk/conqueror/technical)



**01. NEW** fully moulded sweeping front GRP panel with triple flush fitting opening windows

**02. NEW** Full height GRP rear panel with **NEW** exclusive LED light clusters

**03. NEW** diamond cut Edge alloy wheels

**04. NEW** contrasting grey GRP sidewall with **NEW** stylish exterior graphics scheme

**05.** Fixing bars for optional Thule rear mounted cycle rack^

**06.** Easy-access gas locker door with three-point locking plus BBQ point, 230V mains socket and **NEW** exterior TV socket and **NEW** exterior shower point

**07.** Hail-resistant GRP roof with **NEW** 100W roof-mounted lightweight solar panel

**08.** AL-KO stabiliser and shock absorbers for smoother, safer towing

^Elite G2



# 12 FABRIC OPTIONS



## CONQUEROR FABRIC OPTIONS

Within the Conqueror range there are three fabric options available; the Zinc scheme that comes as standard and the optional Galloway soft furnishing scheme (based on Challenger) or Ultraleather® Dusk soft furnishing scheme (based on Elegance) - see below.

Please ask your dealer for full details.



### SEATING

#### ZINC



#### GALLOWAY\*

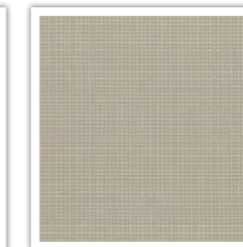


### CUSHION

#### ZINC

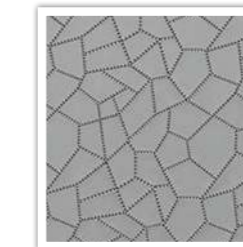


#### GALLOWAY\*

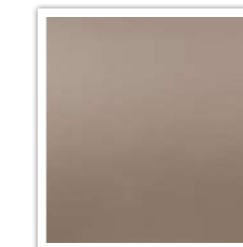


### CURTAINS

#### ZINC

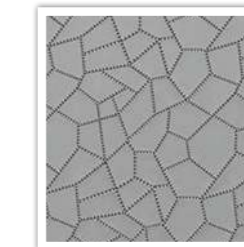


#### GALLOWAY\*



### WALLBOARD

#### ZINC



#### GALLOWAY\*



### HEADBOARD

#### ZINC



#### GALLOWAY\*



\*Optional





SMART is the basis of our intelligent construction system, used across our entire touring caravan range. Strong, Modern, Aerodynamic, Resilient and Tested, you can be assured your Swift caravan is a high quality engineered product.



### STRONG

The Strong timberless body frame uses PURe, a tough, hard polyurethane based product that is totally impervious to water and has been proven through use.



### MODERN

The SMART construction system uses Modern materials, and has been developed to ensure the exterior profiles maintain the Modern, desirable looks our caravans are renowned for.



### AERODYNAMIC

We continue to lead the way in Aerodynamics, using Computational Fluid Dynamics to help shape the bodysell for better fuel consumption and safer towing.



### RESILIENT

All fixings are made into the PURe material to a pre-defined depth. PURe is totally impervious to water and has no veins. This means there is no passage for water from the outer skin, making the caravan highly Resilient against moisture.



### TESTED

Extensive safety Testing at the Millbrook track, plus cold chamber Testing down to minus 15°C and beyond, puts prototypes through conditions most products will never have to experience in a lifetime; all part of the Swift ethos to deliver the best products to you.

### HAIL RESISTANT GRP ROOF

Woven GRP outer surface provides greater durability from the elements.

### GRP SIDEWALLS

Balanced panel side walls with GRP outer and inner skins. GRP is more impact resistant than aluminium and can be easily repaired, ensuring long lasting good looks and helping protect your investment for the future.

### FLOOR CONSTRUCTION

'Sandwich' floor construction with ply upper, high rigidity Styrofoam core and GRP outer skin to provide greater durability from the elements.







# CONQUEROR



**VIEW & DOWNLOAD YOUR COMPLETE RANGE OF SWIFT BROCHURES HERE:**

[swiftgroup.co.uk/buy/brochures/](https://swiftgroup.co.uk/buy/brochures/)



**FIND YOUR NEAREST DEALER HERE:**

[swiftgroup.co.uk/find-a-dealer/](https://swiftgroup.co.uk/find-a-dealer/)

## DISCLAIMER

This brochure does not constitute an offer by Swift Group Limited (Swift). Swift reserves the right to alter specifications and prices at any time as materials and conditions demand. Distributors and dealers sell Swift products on their own account and not as agents of Swift. Accordingly, they have no authority to bind Swift or to make any representation or undertaking whatsoever on behalf of Swift. All props are for photographic purposes only and are not included in the specification. Models shown may be fitted with optional extras. Issued September 2022.

CARAVANS • MOTORHOMES • HOLIDAY HOMES - MADE IN BRITAIN BY SWIFT

LOVE LIFE  
LOVE SWIFT