

CREATING SMILES FOR LIFE



SWIFT

PURE
SPACE



2019
SPRITE SUPER

CONTENTS



DIFFERENCE

10 reasons to buy a Swift Caravan

02



SPRITE SUPER

Explore the Sprite Super range inside and out

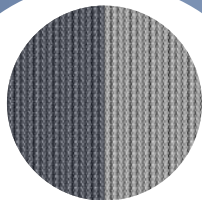
13



FEATURES

Impressive style, comfort and technology

21



FABRIC OPTIONS

Choose the option that matches your style

24



SPECIFICATION

Choose from 2 spacious, 6 berth models

25



PARTNERS

Working together to bring you the best

27



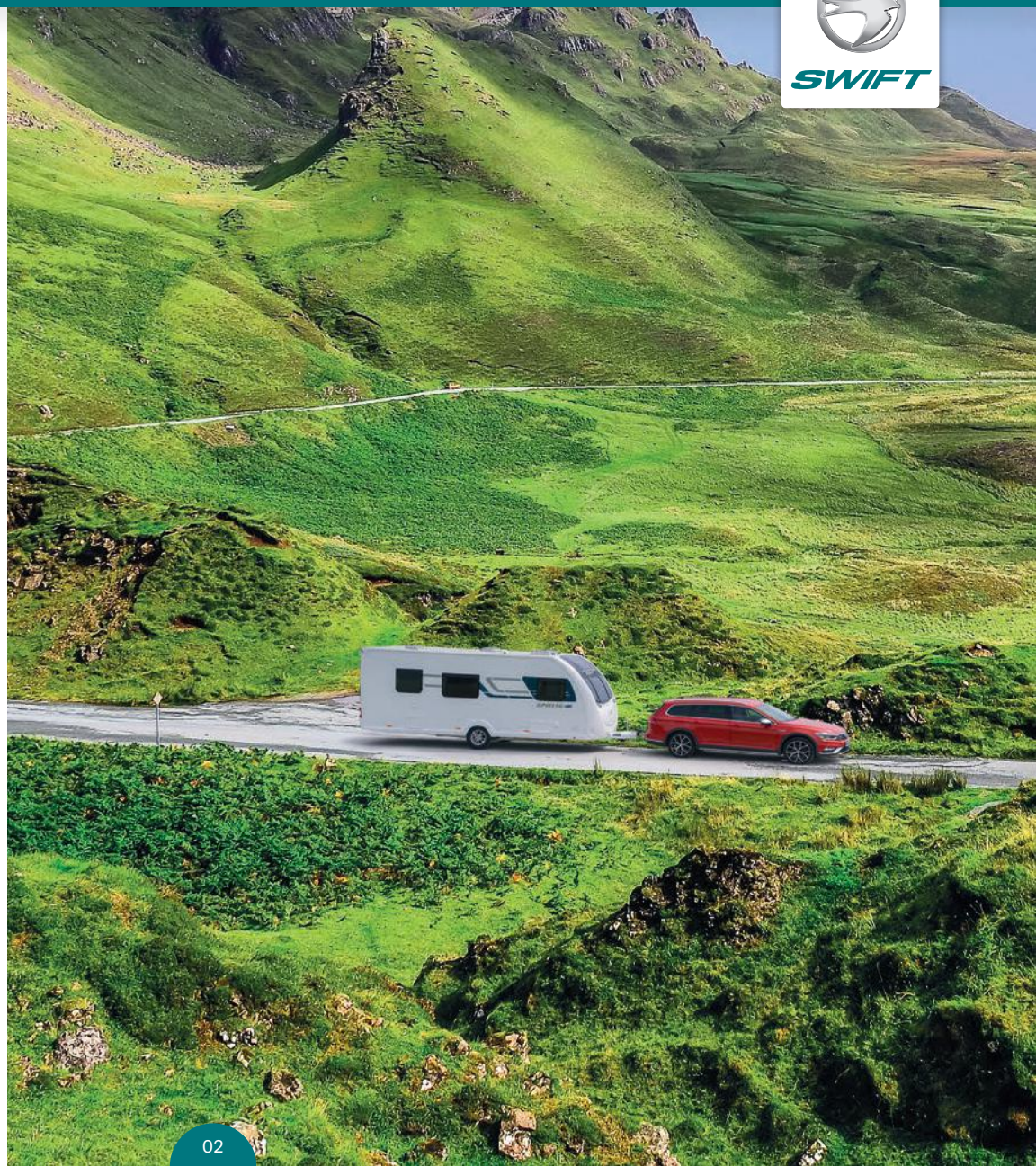
SWIFT

10

Reasons to buy a Swift Caravan

Whether you are seeking exhilarating adventure or peace and tranquility, our aim at Swift is to make your holiday as comfortable and enjoyable as possible

Find out what sets Swift apart



1

Reliable Build Quality

Exclusive to Swift, SMART Construction is the UK's most popular modern construction system. Years of research and rigorous testing went into its development.

**No wonder we've given
it a 10-year manufacturer
bodyshell warranty**



SUBJECT TO T&CS





SWIFT

2

Protecting good looks

GRP outer skin, hail resistant roof and GRP front and rear gives a tougher exterior; more impact resistant than aluminium and easier to repair than ABS. Inside, cushioning tested to extreme, bleachable carpets and optional SwiftShield fabric are all designed to keep your home from home looking its best.

Swift caravans are built to last



SWIFT

SMART



3

Touch Control

Swift Command with new touchscreen control panel, user friendly design and easy to follow navigation with compatible smartphone app to manage key functions like heating.

Vehicle management at your fingertips



4

Secure and Save

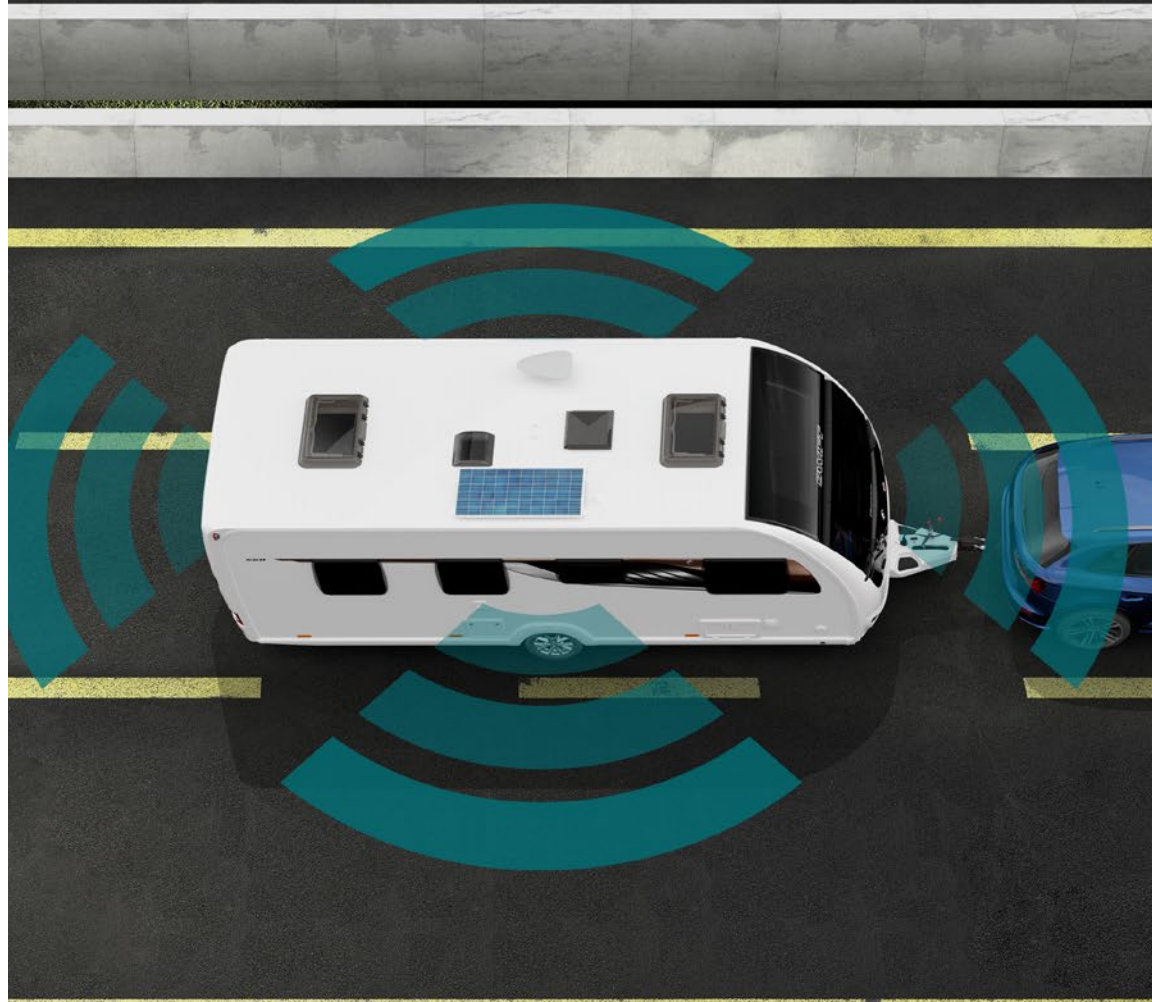
With a pre-installed Swift Command Thatcham Category 6 approved pro-active tracker (subject to annual subscription) and VIN CHIP™ identification system concealed within construction to deter theft and aid quick recovery, you can better secure your vehicle and save with insurance discounts (Discounts depend on insurance provider).

Enjoy extra peace of mind



SWIFT
COMMAND TRACKER

BY SAR@ENT





5

Outstanding Customer Service

Get issues resolved promptly with Connect Direct, our dedicated online customer service account for new owners. Report any problems directly to Swift, and we'll work with your dealer to resolve it as quickly as possible.

With you every step of the way





6

Approved Dealer Network

With the largest dealer network, expert advice is on hand right across the UK thanks to our Approved Dealer Programme. Extensive training programmes for dealer teams through the Swift Academy to support and enhance your Swift experience.

Wherever you wander, you're never too far from a Swift Dealer



7

Relaxing Space

Stay warm and sleep tight every night with Grade 3 heating and insulation along with a Duvalay Duvalite lightweight memory fibre mattress, exclusive to Swift, on all fixed beds.

Relax in comfort on the premium seating – with supportive cushioning and sprung beech slats.

You're assured of a comfortable stay

duvalay[™]
BEDTIME LUXURY

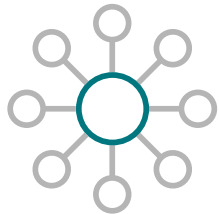


8

Wide Choice

We have different caravans ranges to suit most budgets and styles – each with multiple layout options and weights suitable for a range of tow cars.

We have the UK's best-selling caravan range

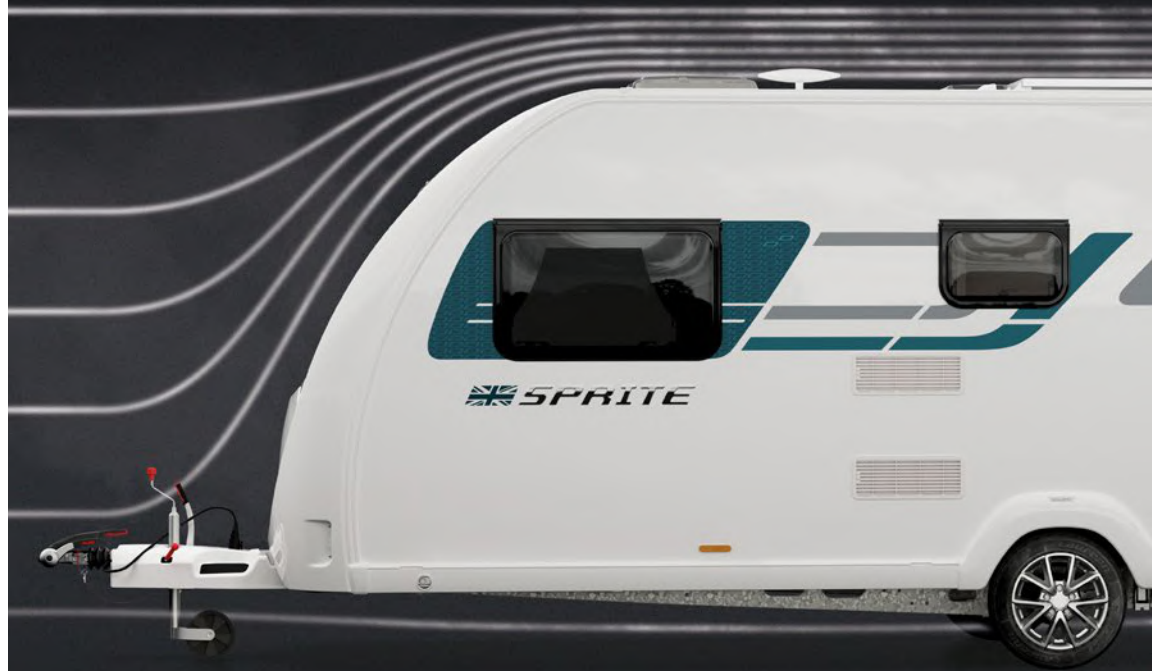


9

Pioneers

Innovation is at the heart of our ethos, we never stand still. This philosophy spans everything Swift builds. From aerodynamic profiling through to modern interior styling, we ensure our products look sensational and work intuitively. We are proud recipients of a Red Dot Award.

**Think contemporary design
and clever storage solutions**





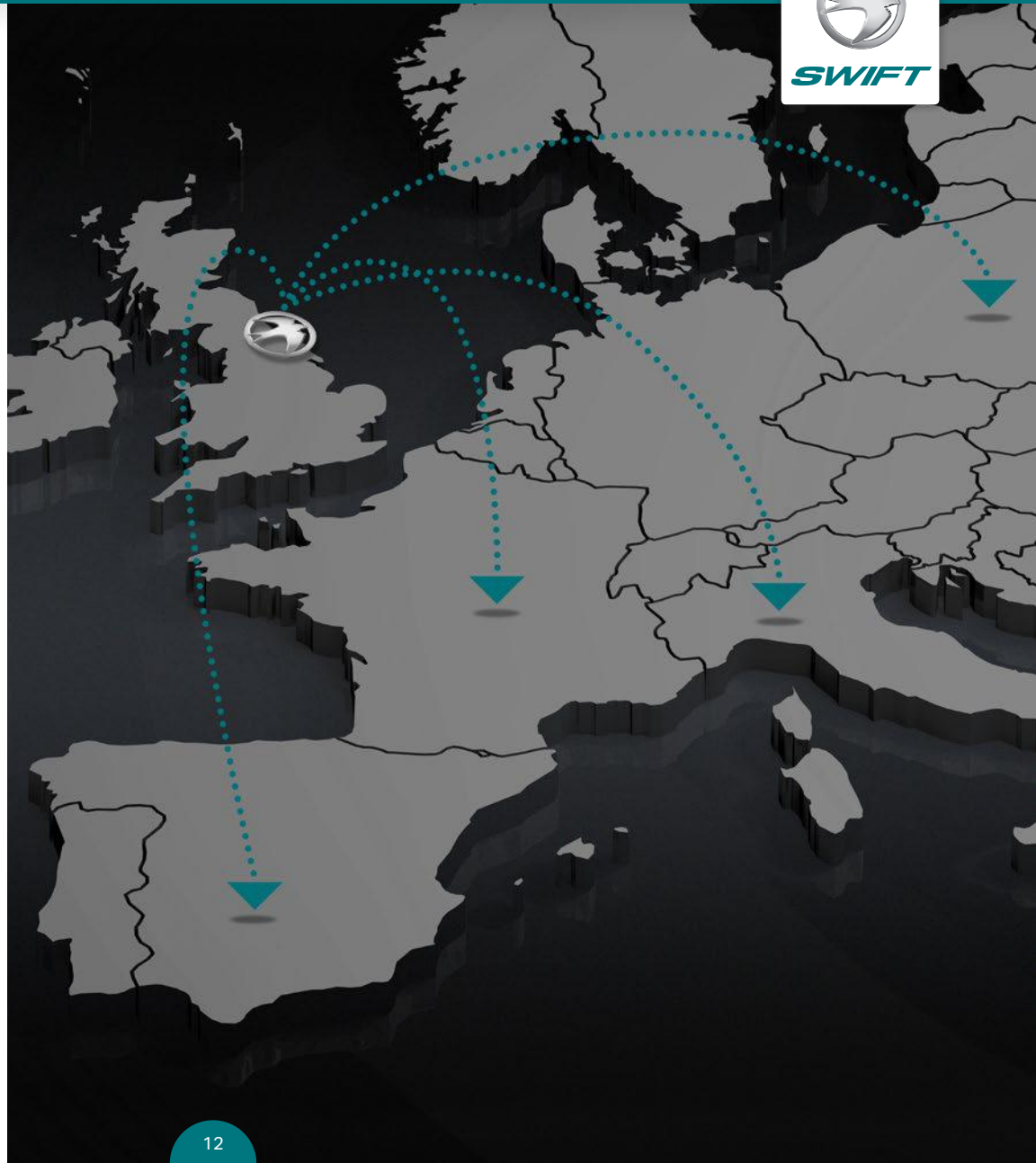
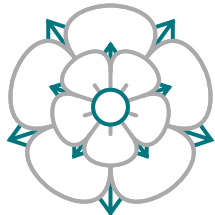
SWIFT

10

Europe's No.1 Brand

British owned, Swift started life as a family business in 1964 and retains that ethos today. We directly employ over 1,200 people, boosting the local economy, developing local expertise and reinforcing the power of British manufacturing.

**Proud to be Yorkshire
Born and Bred**





SWIFT

PURE SPACE



The Sprite Super extends the appeal of the award-winning Sprite range to 8ft wide, offering vast interior living space.

There are two models to choose from, both offering stylish living and sleeping for 6 people. The extra width can really be felt in the more spacious seating areas, which include a wrap-around dinette, and the larger bed make-ups.

The Quattro FB offers a domestic size fixed double bed, whilst the Quattro DB has fixed bunks with a seating/play area at the rear.

Durability and reassurance come as standard with industry leading SMART construction and Swift Connect Direct aftersales customer care.

Models shown in brochure fitted with Diamond pack and panoramic sunroof



SWIFT





SWIFT





SWIFT



The extra space allows for a wider central window and front chest which features a new soft close drawer with concealed drawer inside. The Accuride bed make-up system makes it easy to convert the front seats into a huge double bed.

The clever freestanding telescopic table in the mid-dinette can be lowered when you want to convert this area into yet another spacious double bed.

Powerful Truma Combi heating comes as standard to provide warmth and all the hot water a large family needs. Washrooms also benefit from the extra space with a generous separate shower cubicle and stylish vanity unit.

There are a wide range of options including a panoramic sunroof and Diamond Pack, which are so competitively priced, they are nearly always selected.

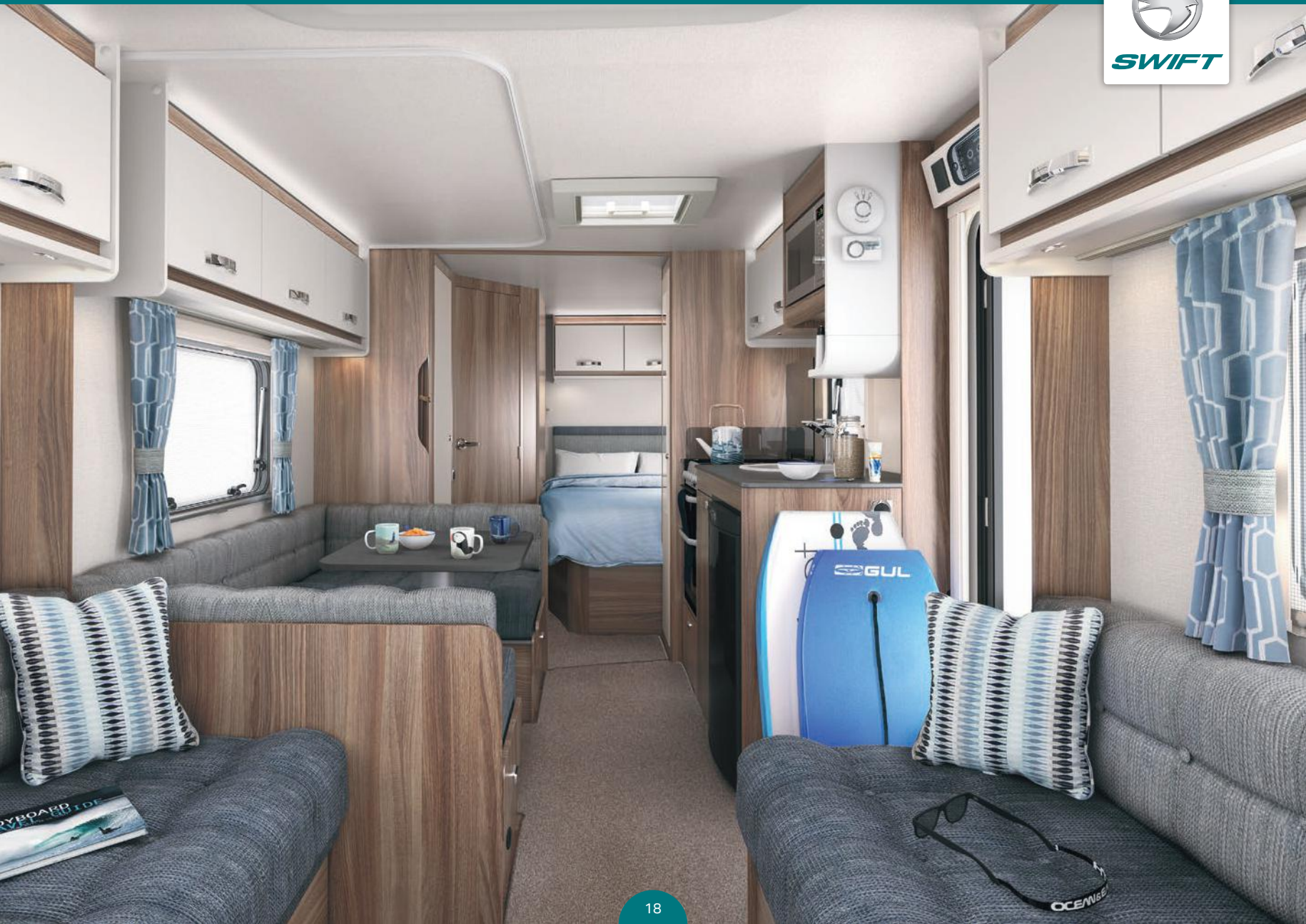


SWIFT





SWIFT





SWIFT



Practical changes include better access to sockets in the kitchen and new modern slate grey worktops.

Boosting specification levels further is the enhanced Swift Command control system with new larger 7", easier to use, LCD colour touchscreen control panel with improved functionality and app interface, featuring new integrated DAB and FM radio tuning and sound setting control as part of the Diamond Pack.

The option to subscribe to a pre-installed Thatcham Category 6 approved pro-active tracker provides added protection.



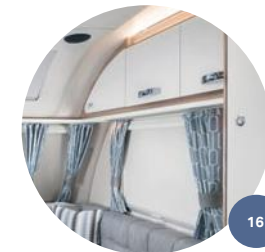
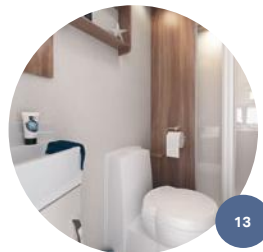
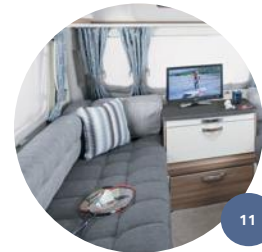
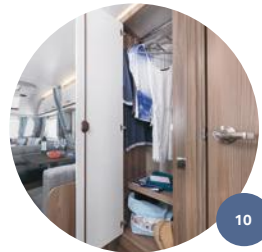


SWIFT



SPRITE SUPER HIGHLIGHTS

01. Swift's first family caravan offering 8ft wide space representing fantastic value and widest front parallel lounge with extra 7 inches between seats*
02. Sweeping front robust GRP panel incorporating wider front central window design, extra wide gas locker door for greater access and hail resistant GRP roof
03. 1.95m (6'5") internal headroom with optional panoramic front sunroof incorporating fully integrated curved blind system
04. External robust rear GRP panel with exclusive LED rear light clusters, LED high level marker and brake light which provide better visibility in poor weather
05. **NEW** extra wide front chest featuring a matt white soft close drawer with concealed drawer inside, convenient slide-out extending top and front binnacle incorporating chrome effect sockets surround and USB points
06. Exclusive wrap-around mid-dinette with telescopic freestanding table
07. A powerful Truma Combi 4 heating system for fast and efficient heating
08. Bigger sleeping spaces with larger front double bed, wider single beds and domestic sized fixed double bed (Quattro FB only)
09. Easy Accuride bed make up system on front and mid-dinette beds with beech slat seat and bed bases with fully opening hinged tops for extra comfort and easy access
10. Additional single wardrobe and underseat space to store even more than before
11. Stylish 'Tyron' interior soft furnishing scheme and 'Aralie Sen' woodgrain with contemporary matt white overhead lockers with push button chrome handles and **NEW** modern slate grey kitchen worktop and table top colour
12. Granite effect kitchen sink with removable extension drainer with dedicated storage and **NEW** improved access to sockets in kitchen area
13. Spacious washroom with dedicated shower
14. **NEW** larger 7", easier to use, LCD colour touchscreen Swift Command control panel with improved functionality and app interface, featuring **NEW** integrated DAB & FM radio (part of Diamond Pack)
15. Dometic 100 litre, electronic ignition fridge with removable freezer compartment, black effect finish and digital controls
16. Internal LED lighting throughout with enhanced over locker lighting and downlights in lounge



* Compared to the standard Sprite

SPRITE SUPER FEATURES

Sprite Super Enhancements

- Wide overall body at 2.46m/8'1"
- Extra wide access gas locker door with two compression locks
- Three flush fitting front opening windows with wider central window
- Spacious front lounge with an extra seven inches between seats (compared to standard Sprite models)
- **NEW** extra wide front chest featuring a soft close drawer with concealed drawer inside and convenient slide-out extending top
- Easy Accuride bed make up system on front and mid-dinette beds with beech slat seat and bed bases with fully opening hinged tops for extra comfort and easy access
- Larger beds including;
 - Domestic sized double fixed bed (Quattro FB only)
 - Wider bunk beds (Quattro DB only)
 - Front seating makes up into new larger double bed (7'4" x 4'6" with chest in situ and 7'4" x 5'11" without chest) or two large single beds (5'11" x 2'5")
- Additional storage space including a second wardrobe
- Spacious washroom with dedicated shower
- Freestanding Telescopic table in mid-dinette area (part of bed make-up)
- Large mid-dinette with wrap-around seating
- Curved swivel table and storage seat at rear (Quattro DB only)

Additional Base Specification

Exterior

- European Whole Vehicle Type Approval ensures compliance with strict weight, dimension and safety regulations
- EN1645 Grade 3 classification for heating and thermal insulation
- AL-KO galvanised steel chassis with Euro-axle
- SMART construction with impact resistant GRP body panels:
 - Strong, moisture proof 'PURE' polyurethane timber-less framed bodyshell with polystyrene insulation core (25mm in sidewalls, 32mm in roof)
 - Robust balanced panel side walls with GRP outer and inner skin
 - 44mm 'sandwich' floor construction with GRP outer skin, ply upper and high rigidity Styrofoam core
 - Hail resistant exterior GRP roof, fully bonded for extra strength and flatness
 - Sweeping front panel in GRP and LED front marker lights
 - Full height GRP rear panel
- Streamlined aerodynamic profile
- Stylish graphics scheme
- Exclusive LED rear light clusters, LED high level marker and brakelight which provide better visibility in poor weather
- LED side marker running lights
- Fully double-glazed opening windows (no single-glazed cold areas)
- Screen printed side windows with graphite grey tint
- Surface mounted impact resistant skirt system
- Semi-recessed body colour awning rail both sides
- Steel wheel and trims
- High tyre rating - a load margin is included in the tyre specification

- 13-pin 'Jaeger' 12V car connector
- AL-KO overrun device
- AL-KO carabiner breakaway cable
- Step-on hitch cover for easier cleaning of front windows
- Bulkhead mounted regulator suitable for use with either propane or butane bottles
- LED awning light
- Exterior one-piece door with interior moulded liner, chrome handle and concealed hinges
- Exterior access battery box with mains electric inlet (battery not included)
- Entrance step
- Fixing bars for optional Thule rear mounted cycle rack

Interior

- 1.95m (6'5") headroom
- Tyrion soft furnishing scheme
- Curtains to all windows (except washroom and bunk bed areas)
- Twin curtain track for improved hanging and ease of use
- 'Aralie Sen' woodgrain and complementary furniture
- Matt white overhead lockers
- Positive overhead locker catches for secure storage on the move with chrome handles
- Side corner opening lockers for extra storage
- Shelves in selected lockers
- Chrome effect sockets and switches
- Sectioned removable carpets for flexibility (not washroom)
- French Oak effect, high impact, scratch resistant floor lino
- Tri-foam cushioning to seat and backrests for seating and sleeping comfort
- Seat and backrest ventilation boards
- Beech slat seat and bed bases for extra comfort with sprung hinged tops for easy access
- Exclusive Duvalay Duvalite Apollo Luxe mattress containing Freshtec – a market leading high spec foam offering maximum airflow for a cool, comfortable good night's sleep (fixed beds only)
- Fixed bed with aluminium bed frames to maximise strength and storage space (model specific)
- Areas under beds and seats, and washroom areas warmed by Truma blown air system
- Midi-Heki roof window with flyscreen and adjustable concertina blind in kitchen and lounge
- **NEW** modern slate grey worktop and table top colour to complement the interior fabric scheme
- Granite effect kitchen sink
- Removable extension drainer with dedicated storage
- **NEW** improved access to kitchen sockets
- Wire basket in kitchen cupboard
- Cutlery drawer on smooth-action steel runners
- Chrome finish crockery rack
- Chrome effect swivel spout kitchen and vanity taps for improved use
- Thick washroom door with domestic style lock and handle
- Easy clean white gloss shower walls
- Shower bi-fold door retained on track for improved access with travel lock
- Micro-Heki roof light in all washrooms
- Cassette flyscreens and blinds on all windows
- Retained embroidered entrance mat

SPRITE SUPER FEATURES

Equipment

- Exclusive Swift Command control system with **NEW** larger 7" LCD colour touchscreen panel with improved user interface and functionality featuring;
 - **NEW** integrated DAB and FM radio tuning and sound setting control (part of Diamond Pack)
 - **NEW** simplified controls for monitoring and managing:
 - Power
 - Battery selection, battery level meter and power usage
 - 230V AC load limiter (settable between 5 amps & 16 amps)
 - Solar panel charging levels (where fitted)
 - Heating control of Truma system
 - Environment monitoring with internal & external temperature and internal humidity levels
 - Selected lighting control
 - Water system controls and tank levels (when fitted)
 - Air-conditioning compatible with Dometic and Truma (dealer fit option, model dependent)
 - Swift Command App with **NEW** interface that is easier to use and more intuitive, enabling you to manage and monitor key vehicle functions from your mobile device including power, heating and selected lighting
 - Incorporates a simpler connectivity selection
 - Bluetooth connectivity when with the vehicle
 - Wi-Fi / GSM connectivity when away from the vehicle
 - Includes the useful 'Places of Interest' feature including 'Campsites' from the Camping & Caravanning Club and Swift dealership locations
- Dual fuel heating with Truma Combi 4 Boiler (1.8kW electric / 4kW gas / 3.8kW dual)
- Digital programmable controller for heating and hot water
- Thetford 3 burner hob with **NEW** glass lid cut out safety feature, oven and separate grill
- Dometic 100 litre, electronic ignition fridge with removable freezer compartment, black effect finish and digital controls
- Ecocamel Orbit shower head with on/off button for a powerful shower that uses less water
- Thetford C260 toilet with electric flush and 18 litre wheeled waste tank
- High flow rate in-board pump with chrome effect taps for reliable, high performance water supply
- Inboard semi-rigid fresh water pipes
- Large bore underslung rigid waste pipes
- Isolation taps for gas appliances
- Fully protected mains electric system
- 25 amp switchmode charger/transformer
- LED lighting throughout interior including:
 - Downlights in lounge
 - Over locker lighting and feature lighting in optional sunroof surround
- Status directional digital and analogue TV aerial
- TV station with 230V, 12V and aerial sockets
- A minimum of four 230V sockets throughout and twin USB points for easy charging of portable devices
- 25 metre mains hook-up cable

Safety and Security

- Swift Command Tracker, a Thatcham Category 6 approved pro-active tracker pre-installed as part of Swift Command system (subject to annual subscription)
- Convenient one-key high security locks
- Smoke alarm
- Carbon monoxide detector
- CRIS identity number labels to windows and caravan chassis
- VIN CHIP™ identification system concealed within construction to deter theft and aid quick recovery

Customer Service

- Exclusive Connect Direct online account with direct access to Swift

Options

Factory Fit Options

- Diamond Pack:
 - **NEW** integrated DAB and FM radio tuning and sound setting control (part of Swift Command control system)
 - 'Edge' alloy wheels
 - AL-KO AKS 3004 Stabiliser
 - Two AL-KO Secure wheel lock receivers
 - Door flyscreen with easy concertina action
 - Microwave oven
 - Two scatter cushions
 - Steel spare wheel
- Panoramic front sunroof incorporating fully integrated curved blind system, recessed lighting and speakers
- **NEW** SwiftShield stain-resistant, easy-clean seating fabric with soft suede like texture
- AL-KO ATC trailer stability control

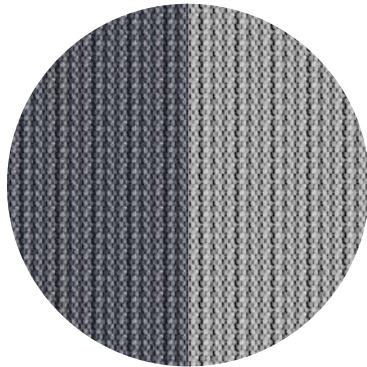
Dealer Fit Options

- Alarm system (infra-red with tilt sensor and key-fob operation)
- AL-KO Secure wheel lock
- Wrap-around front seating in addition to drawer chest
- Weight plate upgrade (model dependent)
- Roof mounted air conditioning unit (model dependent)
- Roof mounted solar panel
- Oyster satellite system (model dependent)
- Thule rail mounted rear cycle rack

SPRITE SUPER FABRIC OPTIONS

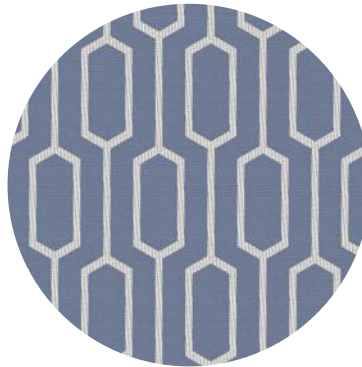
Within the Sprite Super range there are two fabric options available. The 'Tyrior' scheme that comes as standard and the optional SwiftShield scheme. Please ask your dealer for full details.

SEATING

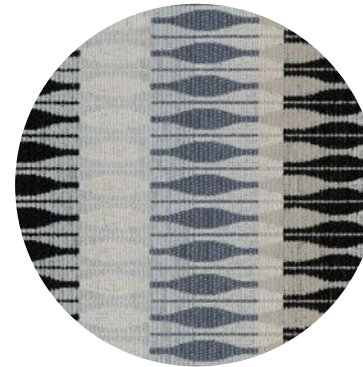


'Nova'
upholstery
scheme
Standard fabric

CURTAIN



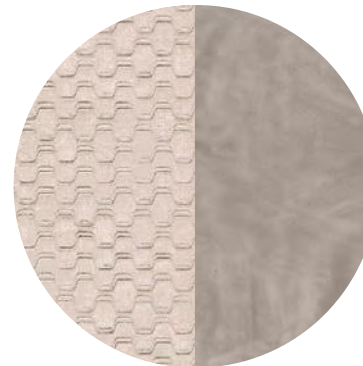
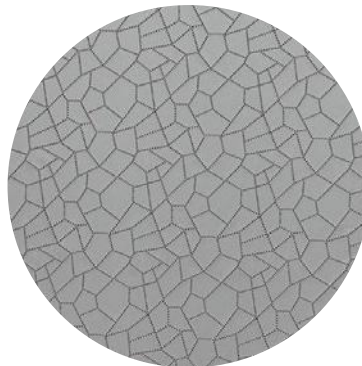
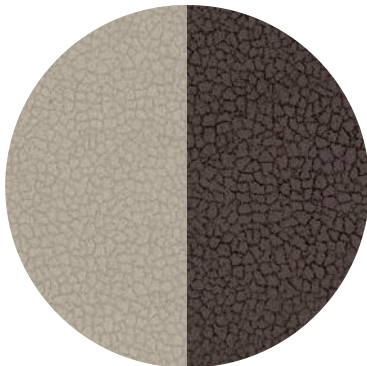
**SCATTER
CUSHION**



SWIFT
SHIELD



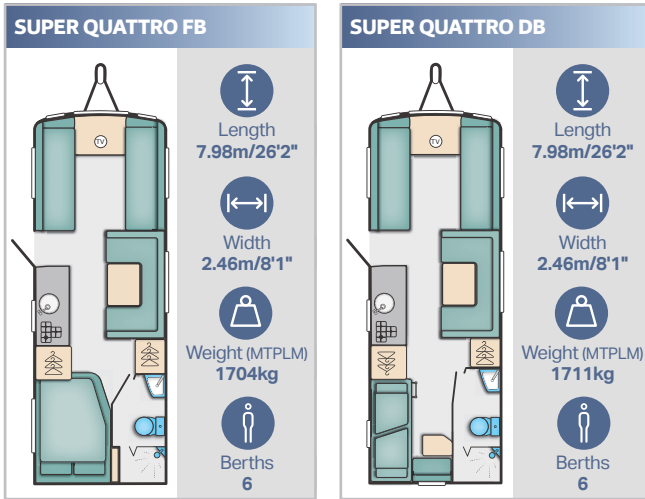
SwiftShield
upholstery
scheme
Optional fabric



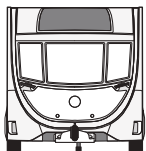
SwiftShield fabric has a soft suede type feel and has been treated during manufacturing to resist stains. It is very easy to clean and just requires a soft cloth dampened with water to remove most stains. SwiftShield is exclusive to Swift Group, you can find out more on Swift TV.



www.swifttv.co.uk

SPRITE SUPER RANGE QUICK VIEW



SPRITE SUPER SPECIFICATION



	QUATTRO FB 	QUATTRO DB 
Berths	6	6
Number of Axles	2	2
Internal Length (at bed box height)	6.27m / 20'7"	6.27m / 20'7"
Overall Width*	2.46m / 8'1"	2.46m / 8'1"
Overall Height (inc. TV Aerial)#	2.59m / 8'6"	2.59m / 8'6"
Maximum Internal Headroom	1.95m / 6'5"	1.95m / 6'5"
Overall Length#	7.98m / 26'2"	7.98m / 26'2"
Awning A/A Dimension	10.56m / 34'8"	10.56m / 34'8"
Mass in Running Order (inc. tolerance)	1479kg / 29.1cwt	1486kg / 29.3cwt
Maximum Technical Permissible Laden Mass	1704kg / 33.5cwt	1711kg / 33.7cwt
Total User Payload	225kg / 4.4cwt	225kg / 4.4cwt
Personal Effects Payload	180kg / 3.5cwt	180kg / 3.5cwt
Options	45.0kg / 0.9cwt	45.0kg / 0.9cwt
Tyre Size	185/70 R14 88T	185/70 R14 88T
Thermal Insulation Grade	Three	Three
BED SIZES		
Front Double	225cm x 180cm / 7'4" x 5'11"	225cm x 180cm / 7'4" x 5'11"
Or Front Nearside Single	180cm x 73cm / 5'11" x 2'5"	180cm x 73cm / 5'11" x 2'5"
And Front Offside Single	180cm x 73cm / 5'11" x 2'5"	180cm x 73cm / 5'11" x 2'5"
Rear Double	196cm x 135cm / 6'5" x 4'5"	
Side/Rear Single Offside		
Side/Rear Single Nearside		
Middle Side Bunk Offside		
Middle Side Bunk Nearside		
Side Double Offside	190cm x 134cm / 6'3" x 4'5"	190cm x 134cm / 6'3" x 4'5"
Rear Side Fixed Bunks		182cm x 72cm / 6'0" x 2'4"

SPECIFICATION NOTES

MASSSES: The masses are calculated in accordance to EU regulation 1230/2012 and NCC code of practice 304.

The Mass in Running Order (MRO) comprises:

1. The mass of the empty caravan as supplied by Swift including loose items such as the hook-up cable, kit bag, entrance step, manuals etc.
2. 10kg allowance for LPG

The MRO is calculated with the fresh water tank, toilet flush tank and water heater empty. If you travel with water in the fresh water tank, toilet flush tank and the water heater the payload will reduce accordingly.

The personal effects is based on the number of berths and the length of the caravan and includes an allowance of 20kg for a leisure battery.

The Maximum Technical Laden Mass (MTPLM) is the maximum mass allowed when the caravan is fully laden.

WARNING: Under no circumstances should the MTPLM be exceeded.

BED SIZES: Please note that the front double bed sizes quoted are for seating configurations without chest of drawers. The front double bed width for a layout with a chest of drawers fitted will be reduced by 0.4m(1'4") from that stated.

AWNING SIZES: Due to the varying awning designs and sizes the awning sizes given are approximate only. Specific awning sizes must be confirmed by your dealer or the awning manufacturer prior to purchase.

The dimensions given are approximate due to slight variations in suspension ride heights, loading conditions and tyre pressures

* Estimated weight or bed size

Customers should verify the actual dimensions of their touring caravan before committing to anything that could be impacted by these dimensions.

Please note: Any dealer fit options will reduce the overall payload available to the user of the caravan. If you require additional payload it is possible to upgrade the MTPLM to the upper limit. Please contact your caravan dealer for more information.

LED ROAD LIGHTS: Certain vehicles may require a secondary fuse box when towing models fitted with LED road lighting.



VALUE ADDED PARTNERS



Swift is delighted to have secured exclusivity to fit the Duvalite mattress as standard in all fixed bed models across all caravan ranges. This innovative lightweight Memory Fibre Mattress is as comfortable as memory foam but has many other benefits. Constantly innovating Duvalay ensure our customers have the premium night's sleep they need and deserve.



Truma provide one of the industry's leading heating systems which features as standard on Sprite models. The Truma Combi heater is lightweight and compact as well as quiet in operation, and there is an efficient boost function for a fast supply of warm water and room heating in a short time. Truma carry out cold chamber testing of our products to prove they meet the Grade 3 standard for heating and insulation.



Swift recommend Oyster satellite TV and broadband. Permanently mounted dishes fold away neatly when travelling then raise and locate the satellite signal automatically seconds after activation. Made in Germany, they come with a 3 year warranty and there is a dedicated UK service centre.



Swift Group are proud to support a charity local to them called the Daisy Appeal. The Daisy appeal is giving loved ones faster, more accurate, diagnosis of three of the region's biggest killers – cancer, heart disease, and dementia.

The Charity's aim is to provide a world-class PET-CT scanning facility which will provide a comprehensive clinical service alongside an ambitious clinical research programme exploring new applications of imaging techniques.

Currently in the UK, most PET-CT scanning is carried out on cancer patients. However, it has great potential in various heart, neurological and other diseases. Many of these will necessitate the use of short half-life radioactive 'markers' which will need to be manufactured on site. Hence the requirement of a purpose built cyclotron, radiochemistry and radiopharmacy facility.

For every caravan, motorhome and holiday home sold, Swift Group make a donation to the Daisy Appeal, helping them to reach their goal of becoming the UK's number one PET-CT service.

To find out more visit www.daisyappeal.org



Diamondbrite LEISURE

Swift are partnering with Diamondbrite Leisure - the ultimate in Paint & Upholstery Protection for your caravan. The exterior nano-ceramic treatment forms a high-gloss coating for easier cleaning and never needs polishing, while the upholstery protection resists staining. It is professionally applied at your dealership and comes with a lifetime guarantee plus complimentary aftercare pack.



SWIFT

VISIT SWIFTGROUP.CO.UK TO...



Configure your model



Watch videos



Download brochures and handbooks



Find a dealer



Social



DISCLAIMER

This brochure does not constitute an offer by Swift Group Limited (Swift). Swift reserves the right to alter specifications and prices at any time as materials and conditions demand. Distributors and dealers sell Swift products on their own account and not as agents of Swift. Accordingly, they have no authority to bind Swift or to make any representation or undertaking whatsoever on behalf of Swift. All props are for photographic purposes only and are not included in the specification. Models shown may be fitted with optional extras. Issued September 2018.

