

CREATING SMILES FOR LIFE



SWIFT

PURE
FREEDOM

2019
ESCAPE



CONTENTS



DIFFERENCE

10 reasons to buy a Swift Motorhome

02



ESCAPE

Explore the Escape range inside and out

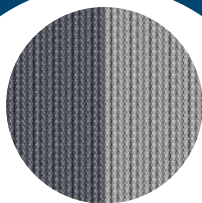
13



FEATURES

Impressive style, comfort and technology

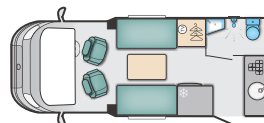
22



FABRIC OPTIONS

Choose the option that matches your style

24



SPECIFICATION

Choose from 10 models, from 2 to 6 berths

25



PARTNERS

Working together to bring you the best

31



SWIFT

10

Reasons to buy a Swift Motorhome

Whether you are seeking exhilarating adventure or peace and tranquility, our aim at Swift is to make your holiday as comfortable and enjoyable as possible

[Find out what sets Swift apart](#)



1

Reliable Build Quality

Exclusive to Swift, SMART Construction is the UK's most popular modern construction system. Years of research and rigorous testing went into its development.

**No wonder we've given
it a 10-year manufacturer
bodyshell warranty**



SUBJECT TO T&CS





SWIFT

2

Protecting good looks

GRP outer skin, hail resistant roof and GRP rear gives a tougher exterior; more impact resistant than aluminium and easier to repair than ABS. Inside, cushioning tested to extreme, bleachable carpets and optional SwiftShield fabric are all designed to keep your home from home looking its best.

Swift motorhomes are built to last



SWIFT

SMART



3

Touch Control

Swift Command with new touchscreen control panel, user friendly design and easy to follow navigation with compatible smartphone app to manage key functions like heating.

Vehicle management at your fingertips



4

Secure and Save

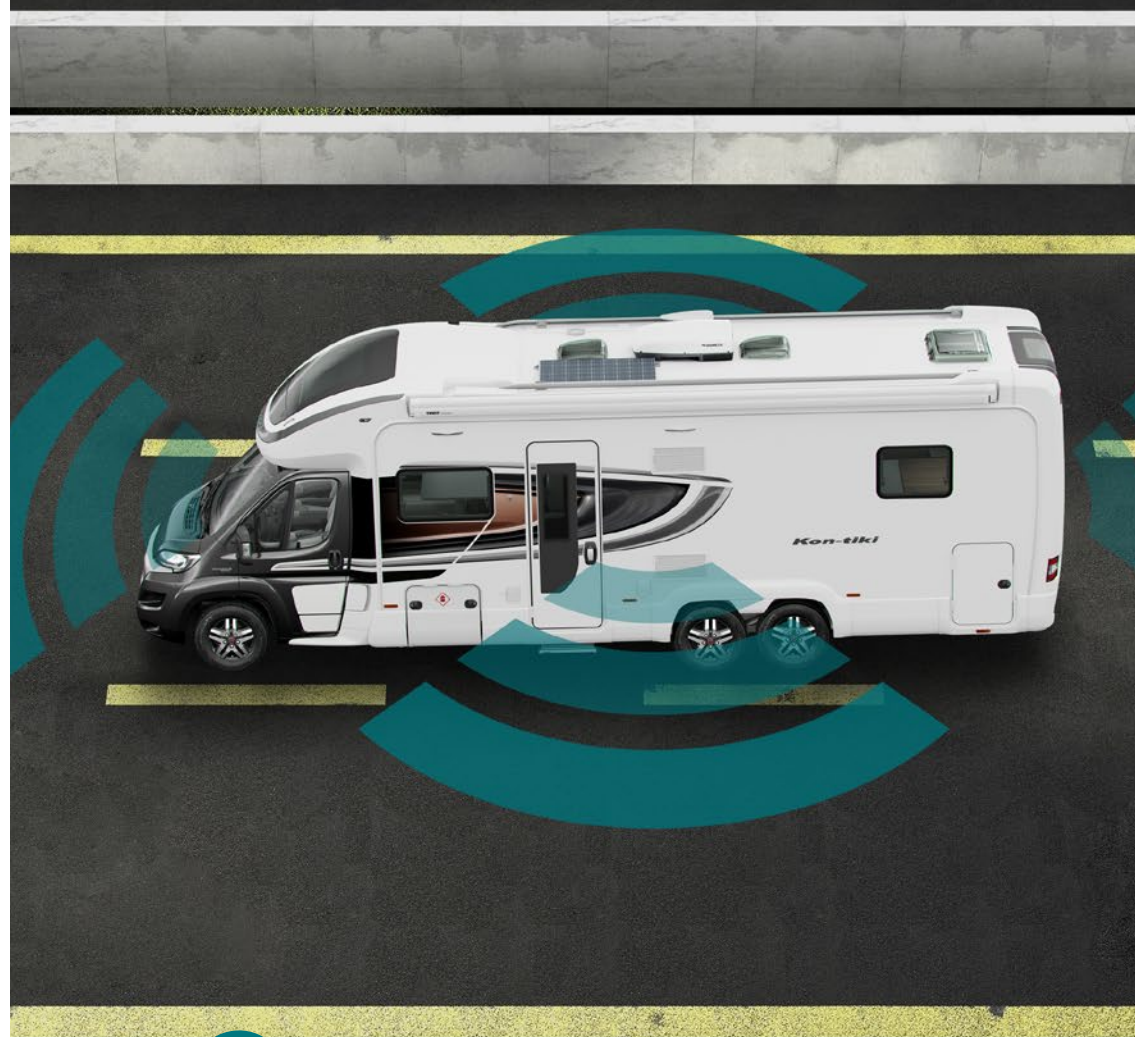
With a pre-installed Swift Command Thatcham Category 6 approved pro-active tracker (subject to annual subscription) and VIN CHIP™ identification system concealed within construction to deter theft and aid quick recovery, you can better secure your vehicle and save with insurance discounts (Discounts depend on insurance provider).

Enjoy extra peace of mind



SWIFT
COMMAND TRACKER

BY SAROENT





5

Outstanding Customer Service

Get issues resolved promptly with Connect Direct, our dedicated online customer service account for new owners. Report any problems directly to Swift, and we'll work with your dealer to resolve it as quickly as possible.

With you every step of the way



6

Approved Dealer Network

With the largest dealer network, expert advice is on hand right across the UK thanks to our Approved Dealer Programme. Extensive training programmes for dealer teams through the Swift Academy to support and enhance your Swift experience.

Wherever you wander, you're never too far from a Swift Dealer



7

Relaxing Space

Stay warm and sleep tight every night with Grade 3 heating and insulation along with a Duvalay Duvalite lightweight memory fibre mattress, exclusive to Swift, on all fixed beds.

Relax in comfort on the premium seating – with supportive cushioning and sprung beech slats.

You're assured of a comfortable stay

duvalay[™]
BEDTIME LUXURY

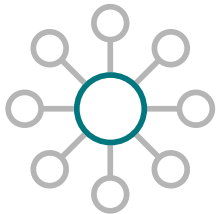


8

Wide Choice

We have different motorhome ranges to suit most budgets and styles – each with multiple layout options and most can be driven with a B licence.

We have the UK's best-selling motorhome range



9

Pioneers

Innovation is at the heart of our ethos, we never stand still. This philosophy spans everything Swift builds. From aerodynamic profiling through to modern interior styling, we ensure our products look sensational and work intuitively. We are proud recipients of a Red Dot Award.

**Think contemporary design
and clever storage solutions**





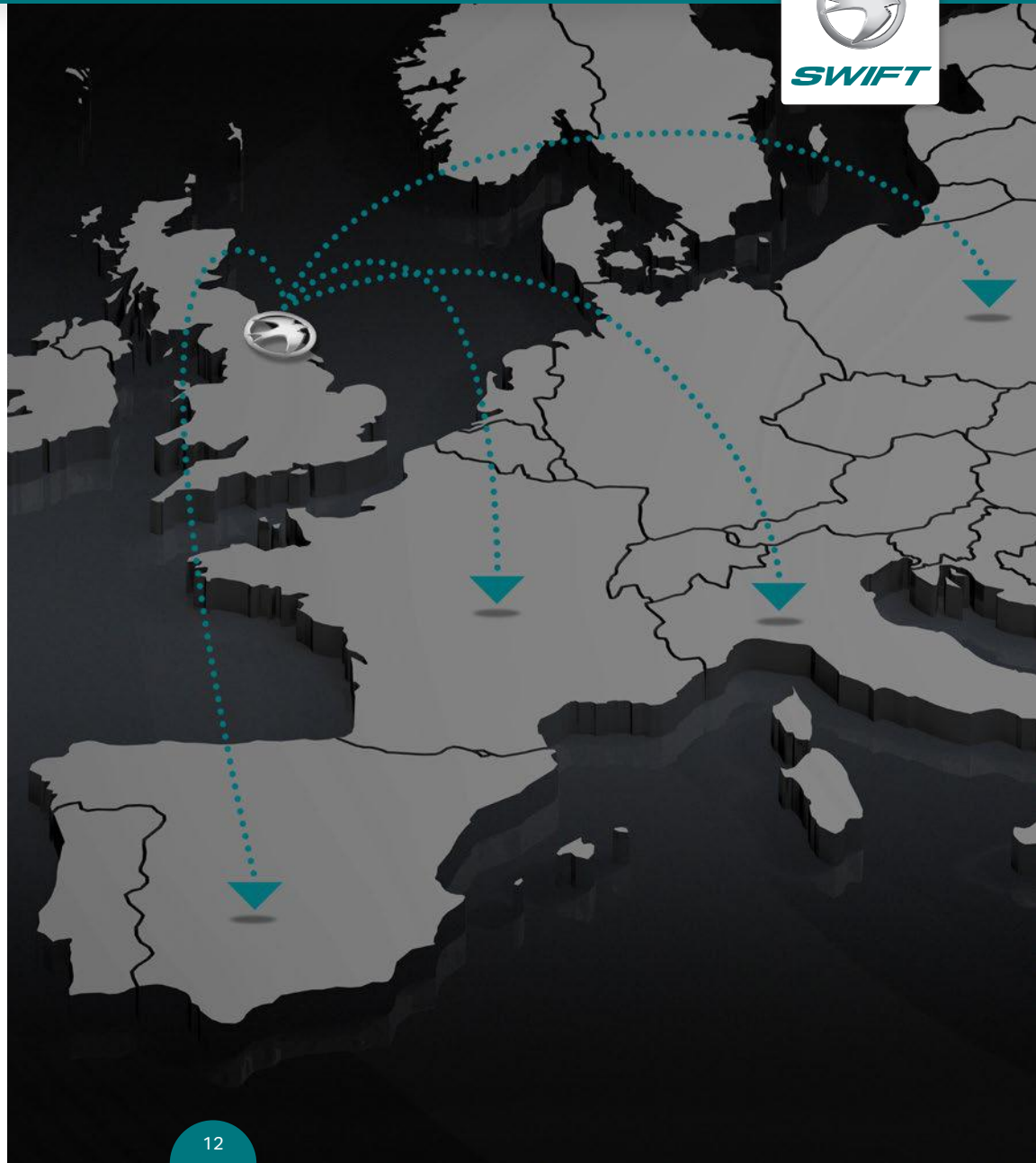
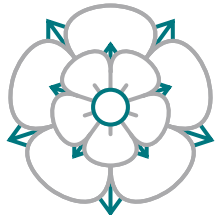
SWIFT

10

Europe's No.1 Brand

British owned, Swift started life as a family business in 1964 and retains that ethos today. We directly employ over 1,200 people, boosting the local economy, developing local expertise and reinforcing the power of British manufacturing.

**Proud to be Yorkshire
Born and Bred**





PURE FREEDOM



The Swift Escape continues to be one of the UK's best selling single motorhome ranges and it's not hard to see why. With new cab-coordinated graphics its streamlined low profile exterior, stylish interior and great value specification, it continues to set the benchmark in the entry-level coachbuilt sector.

With class leading SMART construction, an expanded choice of 10 layouts, with the new 612 and attractive pricing, it's easy to see why this desirable motorhome range is so widely chosen by those looking for their first new motorhome.

Models shown in brochure fitted with Comfort pack



SWIFT





SWIFT





SWIFT



The opening sunroof, which comes as part of the great value Comfort Pack, allows plenty of natural light into the interior where 'Nova' soft furnishings in shades of warm grey and sky blue are paired with 'Aralie Sen' woodgrain.

Matt white high level lockers feature chrome positive locker catches for safe and secure storage. Adding to the quality feel are pleated cassette blinds to the windows.

Flexible seating and sleeping arrangements feature Swift's exclusive AirWave cushioning with a unique construction that expertly blends comfort and support. Fixed beds, including drop down beds, are topped with the ultra-comfortable Duvalay Duvalite mattress, again exclusive as standard equipment to Swift.



SWIFT





SWIFT





SWIFT



Most models feature an L-shaped kitchen area with handy worktop extension and tall slimline Dometic fridge opposite, making a great working space. New enhancements include practical 'Fero' dark grey worktops and a new telescopic dining table with sliding tabletop function. Plentiful hot water is provided by the Truma Combi heating system.

The enhanced Swift Command control system now makes it even easier to remotely manage and control onboard functions like heating with an improved user interface; and the option to subscribe to a pre-installed Thatcham Category 6 approved pro-active tracker, to better protect your precious possessions.

The optional special value Comfort Pack features a host of valuable additions including reversing sensors and Winter Pack. You can also specify a drop down bed and an extra travel seat on selected models.





SWIFT



Optional bike rack



ESCAPE HIGHLIGHTS

01. Fiat chassis cab with Fiat Euro 6 130bhp, 2.3 litre engine, complementary graphics and daytime running lights – all models at 3500kg
02. Dashboard design with fully integrated factory-fit DAB Radio/MP3 player with Bluetooth and switch-off timing adjustable up to 3 hours and wing mirror antenna for better reception
03. ABS brakes and EBD (electronic brake force distribution)
04. Full GRP rear panel with exclusive LED rear light clusters
05. Swift AirWave cushioning for greater seating and sleeping comfort
06. Exclusive Duvalay Duvalite Apollo Luxe mattress containing Freshtec – a market leading high spec foam offering maximum airflow for a cool, comfortable good night's sleep (Fixed beds and drop down beds)
07. Height adjustable manual drop-down beds with lower drop level (604, 614, 685 & 695 - optional on 674, 684 & 694)
08. Combination thermostatic oven, grill and 3 burner gas hob all with electronic ignition
09. Optional special value Comfort Pack incorporating panoramic opening sunroof and Winter Pack
10. En-route dual fuel heating with Truma Combi boiler
11. **NEW** larger 7", easier to use, LCD colour touchscreen Swift Command control panel with improved functionality and app interface
12. Microwave oven
13. 'Nova' soft furnishing scheme with scatter cushions and 'Aralie Sen' woodgrain with contemporary colouring
14. A minimum of four 230V sockets, **NEW** 12V socket on rear passenger seats (model specific) and **NEW** dedicated USB points
15. Matt white overhead lockers with chrome handles and push-button locks
16. Ultra-low energy lighting system with LED spotlights and over-locker ambient lighting



01



02



03



04



05



06



07



08



09



10



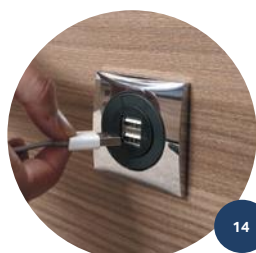
11



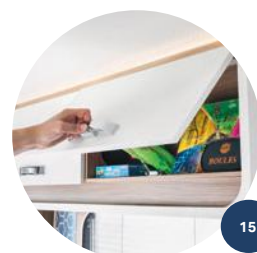
12



13



14



15



16

ESCAPE FEATURES

Chassis-Cab

- White Fiat chassis cab
- Front bumper finished in body colour
- Daytime running lights
- Fiat Euro 6 130bhp, 2.3 litre engine
- Dashboard design with fully integrated factory-fit DAB Radio/MP3 player with Bluetooth and switch-off timing adjustable up to 3 hours and wing mirror antenna for better reception
- Cab battery isolation switch to prevent discharge in storage
- Driver's airbag
- Thermal cab window covers
- Cab carpet (removable)
- Captain's chairs with twin armrests and integrated headrest
- Driver and passenger seats with:
 - Position, height and rake adjustment
 - Swivels (except 622)
 - Two armrests
 - Fully upholstered covers
 - Seat base surrounds
- ABS brakes
- EBD (electronic brake force distribution)
- Immobiliser with rolling code
- Variable power steering
- Key fob operated remote central locking of cab doors
- Electrically operated and tinted cab windows
- Headlamp height adjustment
- Adjustable steering wheel position
- Central cup holder with dash mounted holder for full width tablet and pocket for smartphone with USB port for charging
- Door pockets with bottle holders
- 12V power socket

Body and Exterior Equipment

- European Whole Vehicle Type Approval ensures compliance with strict weight, dimensions and safety regulations
- **NEW** VIN CHIP™ identification system concealed within construction to deter theft and aid quick recovery
- All models have a MTPLM of 3500kg and can be driven on a normal category B driving license
- Distinctive streamlined low profile
- SMART construction with full GRP bodyshell:
 - Strong, moisture proof 'PURE' Polyurethane timberless framed body shell with HD polystyrene insulation core
 - Balanced panel 31mm sandwich side walls with GRP outer and inner skin
 - 'Sandwich' floor construction with GRP outer skin, ply upper and high rigidity Styrofoam core (70mm on 604, 612, 614, 622 & 664; 44mm on 674, 684, 685, 694 & 695)
 - 31mm 'sandwich' construction hail resistant exterior GRP roof, fully bonded for extra strength and flatness, and GRP inner skin
 - Full height GRP rear panel
- GRP front low line pod with optional opening sunroof (part of Comfort Pack)
- AL-KO extra-long wheelbase chassis (674, 684, 685, 694 & 695)
- **NEW** upgraded graphics scheme coordinated with cab
- White extruded skirts link with full GRP rear panel
- Exterior access locker door (604, 612, 614, 622, 664, 674 & 694)
- Large exterior 'Garage' access door (614, 684 & 695)
- Main habitation door with 2 point locking system and integrated door retainer
- Single key for all habitation doors
- Flush fitting, double glazed, tinted acrylic windows with night latch ventilation
- 16" wheels with full wheel trims
- Exclusive styled front LED marker lights
- LED side marker lights
- Exclusive LED rear light clusters
- Low energy LED exterior awning light
- LED high-level brake light
- Provision for 1 x 6kg and 1 x 13kg (2 x 6kg in 604 & 612) gas bottles with fitted butane/propane regulator and propane hose
- Spare wheel on under slung carrier (604, 612, 614, 622 & 664)
- Fix & Go puncture repair kit (674, 684, 685, 694 & 695)
- Heavy duty chassis extensions ready for optional towbar
- Bike rack fixing rails fitted to the rear

Living Area

- 'Nova' soft furnishing scheme with complementary scatter cushions
- 'Aralie Sen' woodgrain with contemporary colouring and matt white overhead lockers
- Chrome handles with push-button locks on overhead locker doors
- Two-position front seating arrangement providing L-shape lounge or two forward facing travelling seats (674, 684, 685, 694, 695)
- Ergonomically shaped rear travelling seats
- Lap and diagonal seat belts on all designated passenger seats
- High performance, durable Swift AirWave foam in seats and backrests for greater seating and sleeping comfort
- **NEW** fixed telescopic dining table with sliding table top function in complementary colour (model specific)
- Freestanding table in 612 & 622
- **NEW** soft touch, automotive style decorative blind and flyscreen surrounds (except kitchen)

- Exclusive Duvalay Duvalite Apollo Luxe mattress containing Freshtec – a market leading high spec foam offering maximum airflow for a cool, comfortable good night's sleep (Fixed beds and drop down beds)
- Height adjustable manual drop-down beds with lower drop level (604, 614, 685 & 695 - optional on 674, 684 & 694)
- Seat backrest ventilation boards
- Lounge seat and bed tops spring assisted for easy access (except travelling seats)
- Bed mattresses and lounge bench seat cushions supported by beech slats for extra comfort
- Pleated cassette blinds with flyscreens on all windows
- **NEW** metal curtain tracks for room dividers and washrooms (model specific)
- Midi Heki rooflight in lounge area with flyscreen and adjustable pleated blind (MPK in 604/614)
- Sectioned removable carpets for flexibility
- French Oak effect, high impact, scratch resistant floor lino
- Travel lock for TV brackets where fitted
- Removable stepwell mat
- Smoke alarm
- Carbon monoxide alarm

Kitchen

- Dometic 8 series 85 litre automatic energy selection fridge with 230V, gas and 12V operation (612, 622 & 664)
- Dometic 138 litre slimline fridge in 604, 614, 674, 684, 685, 694 & 695
- Combination thermostatic oven, 3 burner gas hob with glass lid featuring **NEW** auto gas shut-off functionality, and grill all with electronic ignition
- Built-in microwave oven with digital controls
- Kitchen rooflight with flyscreen and blind

ESCAPE FEATURES

- Granite effect moulded kitchen sink
- Foldaway kitchen worktop extension (except 604, 612, 614 & 664)
- L-shaped sink unit with worktop extension and cutlery drawers on 674, 684, 685, 694 & 695
- Drawer storage under oven (model specific)
- Removable drainer and food grade nylon chopping board nestle together for easy storage in dedicated location
- Vector chrome effect kitchen mixer tap
- LED strip lighting in china locker
- **NEW** kitchen worktop in 'Fero' dark grey with textured finish and complementary sink bowl colour

Washroom

- Washroom design with vanity unit, sink and shower
- Dedicated shower cubicle (604, 614)
- Illuminated shower tower with acrylic inlay panel (604, 614)
- Ecocamel Orbit shower head with on/off button for a powerful shower that uses less water
- 32mm thick entrance door with domestic style mortice lock and handle
- Vector chrome effect mixer tap
- Thetford cassette toilet with electric flush and 18 litre wheeled tank
- Overhead towel locker (model specific)
- Micro-heki skylight with flyscreen (except 664 which has side window)
- Mini LED downlights
- High gloss white washroom wallboard

Heating and Plumbing

- Grade 3 classification (EN 1646-1) for heating and thermal insulation (for sub-zero ambient temperatures)
- Dual fuel heating with Truma Combi 4 1.8kW electric/4kW gas/3.8kW combined (Combi 6

- 1.8kW electric/6kW gas/5.8kW combined in 674, 684, 685, 694 & 695)
- Digital programmable controller for heating and hot water
- Truma 'Crash sensing Mono' regulator for en-route use of heating and water heating
- 100 litre internal fresh water tank with level sensor (90 litre external fresh water tank on 612)
- 68 litre waste water tank with level sensor (60L on 604)
- En-route heating for underfloor water tanks to keep defrosted
- Electronic drain valves on Fresh and Waste water tanks
- Pressurised fresh water system with self-priming pump and accumulator
- 12V exterior power point for pump filling of water tank (pump not supplied)

Electrical

- Exclusive Swift Command touch system with **NEW** larger 7" LCD colour touchscreen panel with improved user interface and functionality featuring:
 - **NEW** simplified controls for monitoring and managing:
 - Power
 - Battery selection, battery level meter and power usage
 - 230V AC load limiter (settable between 5 amps & 16 amps)
 - Solar panel charging levels (where fitted)
 - Heating control of Truma system
 - Environment monitoring with internal & external temperature and internal humidity levels
 - Selected lighting control
 - Water system controls and tank levels and control of tank drain valves

- Air-conditioning compatible with Dometic and Truma (dealer fit option, model dependent)
- Pre-installed Swift Command Tracker, a Thatcham Category 6 approved pro-active tracker (subject to annual subscription)
- Swift Command App with **NEW** interface that is easier to use and more intuitive, enabling you to manage and monitor key vehicle functions from your mobile device including power, heating and selected lighting:
 - Incorporates a simpler connectivity selection:
 - Bluetooth connectivity when with the vehicle
 - Wi-Fi / GSM connectivity when away from the vehicle
 - Includes the useful 'Places of Interest' feature including 'Campsites' from the Camping & Caravanning Club and Swift dealership locations

- Fully sealed, long life, 80 Amp-hour (Dir 2006/66/EC) leisure battery below driver's seat (under rear bunk on 695)
- **NEW** 12V socket for rear passenger seats
- A minimum of four chrome 230V sockets and **NEW** dedicated USB points
- Mains consumer unit with mains isolators and 12V fuse board
- 25 Amp/300 Watt charger/transformer for leisure batteries
- TV station with 230V and 12V sockets, aerial socket
- Ultra-low energy lighting system:
 - LED spotlights
 - Over-locker LED ambient lighting
 - Adjustable LED cab reading lights
- 25 metre mains hook-up cable

Customer Service

- Exclusive Connect Direct online account with direct access to Swift

Factory Fit Options

- Comfort-Matic automatic gearbox with Fiat Euro 6 130bhp, 2.3 litre engine with ESP (only available in conjunction with Comfort Pack)
- Special Value Comfort Pack consisting of:
 - Cruise control
 - Panoramic opening sunroof with **NEW** soft touch sunroof surround
 - Cab air-conditioning
 - Passenger air bag
 - Easy action concertina door flyscreen
 - Pleated windscreen blind
 - Status 570 TV aerial
 - Reversing sensors
 - Winter Pack with:
 - Waste water tank heater with en-route heating to keep defrosted
 - Under floor waste pipe insulation
 - **NEW** insulated drain valve covers
 - Fridge vent covers
- Fifth seat belt option with manual drop-down bed on 674, 684 & 694 models
- 'SwiftShield' stain resistant, easy-clean fabric
- Detachable homologated tow bar and electrics (conforming to 94/20/EC or 55R ECE)
- Thule roll out awning
- 3650kg MTPLM upgrade for 604, 612, 614, 622 & 664 models – in dealer or factory fit
- 3700kg MTPLM upgrade for 674, 684, 685, 694 & 695 models

Dealer Fit Options

- Annual subscription to Swift Command Tracker by Sargent
- Roof mounted air conditioning unit (model dependent)
- Thule rail mounted rear cycle rack
- Oyster satellite system (model dependent)

ESCAPE FABRIC OPTIONS

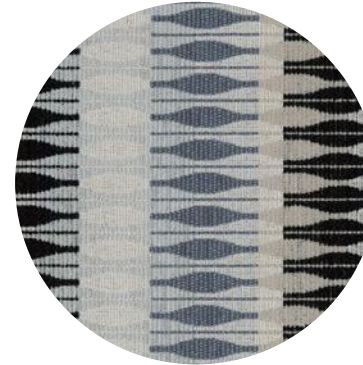
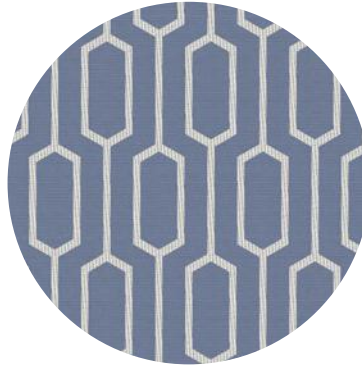
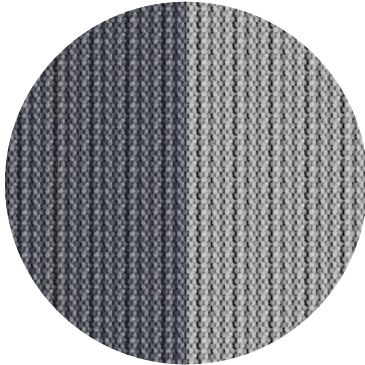
In addition to the standard fabric, a SwiftShield scheme is available as an optional extra .

SEATING

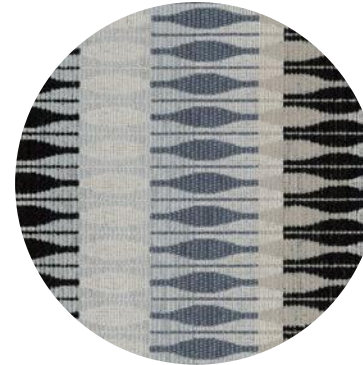
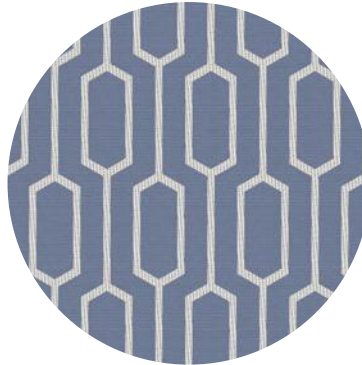
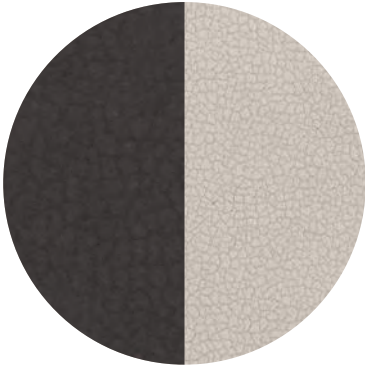
WINDOW PAD

**SCATTER
CUSHION**

**'Nova'
upholstery
scheme**
Standard fabric



**SwiftShield
upholstery
scheme**
Optional fabric




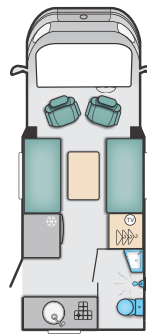
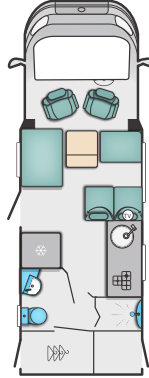
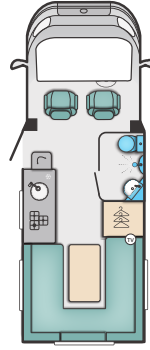


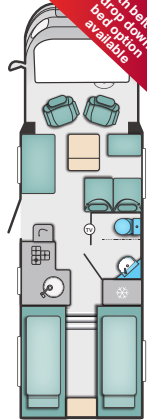

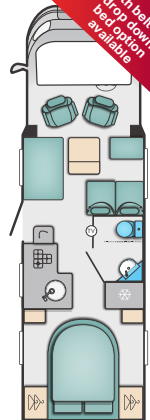

SWIFT
SHIELD



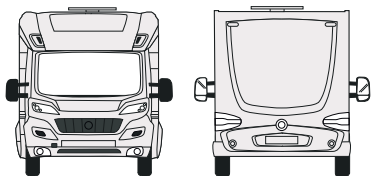
SwiftShield fabric has a soft suede type feel and has been treated during manufacturing to resist stains. It is very easy to clean and just requires a soft cloth dampened with water to remove most stains. SwiftShield is exclusive to Swift Group, you can find out more on Swift TV.

www.swifttv.co.uk

ESCAPE RANGE QUICK VIEW

<p>ESCAPE 604</p>  <p>Length 5.97m/19'7"</p> <p>Width 2.31m/7'7"</p> <p>Weight (MTPLM) 3500kg</p> <p>Belts/Berths 4/4</p>	<p>ESCAPE 612 NEW</p>  <p>Length 5.88m/19'3"</p> <p>Width 2.31m/7'7"</p> <p>Weight (MTPLM) 3500kg</p> <p>Belts/Berths 2/2</p>	<p>ESCAPE 614</p>  <p>Length 6.72m/22'1"</p> <p>Width 2.31m/7'7"</p> <p>Weight (MTPLM) 3500kg</p> <p>Belts/Berths 4/4</p>	<p>ESCAPE 622</p>  <p>Length 6.29m/20'8"</p> <p>Width 2.31m/7'7"</p> <p>Weight (MTPLM) 3500kg</p> <p>Belts/Berths 2/2</p>	<p>ESCAPE 664</p>  <p>Length 6.72m/22'1"</p> <p>Width 2.31m/7'7"</p> <p>Weight (MTPLM) 3500kg</p> <p>Belts/Berths 4/4</p>
<p>ESCAPE 674</p>  <p>Length 7.41m/24'4"</p> <p>Width 2.31m/7'7"</p> <p>Weight (MTPLM) 3500kg</p> <p>Belts/Berths 4/4</p> <p><i>5th belt & drop-down bed option available</i></p>	<p>ESCAPE 684</p>  <p>Length 7.41m/24'4"</p> <p>Width 2.31m/7'7"</p> <p>Weight (MTPLM) 3500kg</p> <p>Belts/Berths 4/4</p> <p><i>5th belt & drop-down bed option available</i></p>	<p>ESCAPE 685</p>  <p>Length 6.92m/22'8"</p> <p>Width 2.31m/7'7"</p> <p>Weight (MTPLM) 3500kg</p> <p>Belts/Berths 5/6</p>	<p>ESCAPE 694</p>  <p>Length 7.41m/24'4"</p> <p>Width 2.31m/7'7"</p> <p>Weight (MTPLM) 3500kg</p> <p>Belts/Berths 4/4</p> <p><i>5th belt & drop-down bed option available</i></p>	<p>ESCAPE 695</p>  <p>Length 6.92m/22'8"</p> <p>Width 2.31m/7'7"</p> <p>Weight (MTPLM) 3500kg</p> <p>Belts/Berths 5/6</p>

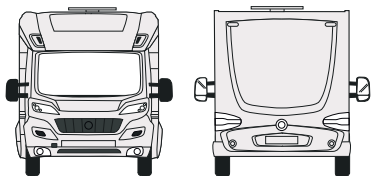
ESCAPE SPECIFICATION



	604		612		614	
	Standard	Optional	Standard	Optional	Standard	Optional
Fiat MultiJet Diesel Engine	130	130 Auto	130	130 Auto	130	130 Auto
Engine Capacity	2.3ltr		2.3ltr		2.3ltr	
Engine Power	96kW @ 3600rpm		96kW @ 3600rpm		96kW @ 3600rpm	
Engine Torque	320Nm @ 1800rpm		320Nm @ 1800rpm		320Nm @ 1800rpm	
Roof Profile	Low-line		Low-line		Low-line	
Wheel Base	3.80m / 12'6"		3.00m / 9'10"		3.80m / 12' 6"	
Seat Belts (inc. driver)	4		2		4	
Berths (Sleeping Positions)	4		2		4	
Overall Length	5.97m / 19'7"		5.88m / 19'3"		6.72m / 22'1"	
Overall Body Width (Mirrors folded)	2.31m / 7'7"		2.31m / 7'7"		2.31m / 7'7"	
Overall Height	2.91m / 9'6"		2.93m / 9'7"		2.91m / 9'6"	
Optional Awning	Thule 6200 3.0m		Thule 6200 3.0m		Thule 6200 3.5m	
Maximum Technical Permissible Laden Mass (A)	3500kg		3500kg		3500kg	
Mass in Running Order (B)	2854kg	2871kg	2740kg	2757kg	2947kg	2964kg
Maximum User Payload (A-B)	646kg	629kg	760kg	743kg	553kg	536kg
Essential Habitation Equipment	0kg		0kg		0kg	
Thermal Insulation Grade	THREE		THREE		THREE	
Recommended Maximum Trailer Weight*	2000kg		1600kg*		1600kg	
Gross Train Weight*	5500kg		5100kg		5100kg	
BED SIZES						
Front Double	2.09m x 1.39m / 6'10" x 4'7" / 3'5"		2.09m x 1.30m / 6'10" x 4'3"		2.09m x 1.39m / 6'10" x 4'7" / 3'5"	
Front Nearside Single			1.88m x 0.69m / 6'2" x 2'3"			
Front Offside Single			1.88m x 0.69m / 6'2" x 2'3"			
Rear Double						
Rear Nearside Single						
Rear Offside Single						
Rear Bunk Upper						
Rear Bunk Lower						
Front drop down bed	1.93m x 1.27m / 6'4" x 4'2"				1.93m x 1.27m / 6'4" x 4'2"	

ESCAPE SPECIFICATION

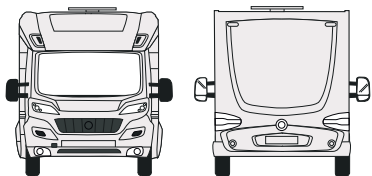
...CONTINUED



	622		664		674†	
	Standard	Optional	Standard	Optional	Standard	Optional
Fiat MultiJet Diesel Engine	130	130 Auto	130	130 Auto	130	130 Auto
Engine Capacity	2.3ltr		2.3ltr		2.3ltr	
Engine Power	96kW @ 3600rpm		96kW @ 3600rpm		96kW @ 3600rpm	
Engine Torque	320Nm @ 1800rpm		320Nm @ 1800rpm		320Nm @ 1800rpm	
Roof Profile	Low-line		Low-line		Low-line	
Wheel Base	3.45m / 11' 4"		3.80m / 12' 6"		4.65m / 15' 3"	
Seat Belts (inc. driver)	2		4		4 (opt 5)	
Berths (Sleeping Positions)	2		4		4 (opt 6)	
Overall Length	6.29m / 20' 8"		6.72m / 22' 11"		7.41m / 24' 4"	
Overall Body Width (Mirrors folded)	2.31m / 7' 7"		2.31m / 7' 7"		2.31m / 7' 7"	
Overall Height	2.91m / 9' 6"		2.91m / 9' 6"		2.88m / 9' 5"	
Optional Awning	Thule 6200 3.5m		Thule 6200 3.5m		Thule 6200 4.25m	
Maximum Technical Permissible Laden Mass (A)	3500kg		3500kg		3500kg	
Mass in Running Order (B)	2760kg	2777kg	2845kg	2862kg	2900kg	2917kg
Maximum User Payload (A-B)	740kg	723kg	655kg	638kg	600kg	583kg
Essential Habitation Equipment	0kg		0kg		0kg	
Thermal Insulation Grade	THREE		THREE		THREE	
Recommended Maximum Trailer Weight*	1600kg		1600kg		2000kg	
Gross Train Weight*	5100kg		5100kg		5500kg	
BED SIZES						
Front Double			2.09m x 1.23m / 0.92m / 6'9" x 4'0" / 3'0"		2.09m x 1.39m / 1.03m / 6'10" x 4'7" / 3'5"	
Front Nearside Single						
Front Offside Single						
Rear Double	2.08m x 1.69m / 6'10" x 5'7"		1.87m x 1.26m / 6'2" x 4'2"		2.06m x 1.83m / 6'9" x 6'0"	
Rear Nearside Single	1.75m x 0.68m / 5'9" x 2'3"				1.83m x 0.68m / 6'0" x 2'3"	
Rear Offside Single	1.86m x 0.68m / 6'1" x 2'3"				1.91m x 0.68m / 6'3" x 2'3"	
Rear Bunk Upper						
Rear Bunk Lower						
Front drop down bed					1.93m x 1.27m / 6'4" x 4'2" (option)	

ESCAPE SPECIFICATION

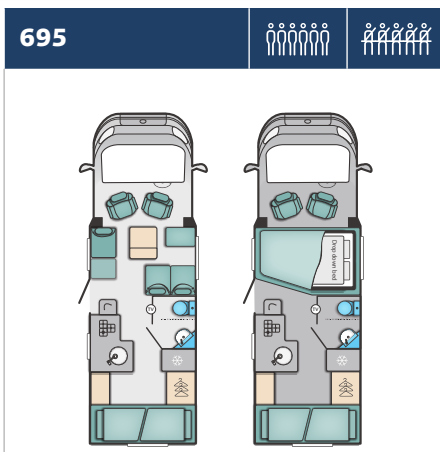
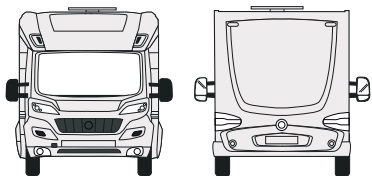
...CONTINUED



	684†		685		694†	
	Standard	Optional	Standard	Optional	Standard	Optional
Fiat MultiJet Diesel Engine	130	130 Auto	130	130 Auto	130	130 Auto
Engine Capacity	2.3ltr		2.3ltr		2.3ltr	
Engine Power	96kW @ 3600rpm		96kW @ 3600rpm		96kW @ 3600rpm	
Engine Torque	320Nm @ 1800rpm		320Nm @ 1800rpm		320Nm @ 1800rpm	
Roof Profile	Low-line		Low-line		Low-line	
Wheel Base	4.30m / 14'1"		4.65m / 15'3"		4.30m / 14'1"	
Seat Belts (inc. driver)	4 (opt 5)		5		4 (opt 5)	
Berths (Sleeping Positions)	4 (opt 6)		6		4 (opt 6)	
Overall Length (No Ladder)**	7.41m / 24'4"		6.92m / 22'8"		7.41m / 24'4"	
Overall Body Width (Mirrors folded)	2.31m / 7'7"		2.31m / 7'7"		2.31m / 7'7"	
Overall Height (Excludes Roof rack)	2.88m / 9'5"		2.88m / 9'5"		2.88m / 9'5"	
Optional Awning	Thule 6200 4.25m		Thule 6200 3.5m		Thule 6200 4.25m	
Maximum Technical Permissible Laden Mass (A)	3500kg		3500kg		3500kg	
Mass in Running Order (B)	2915kg	2932kg	2915kg	2932kg	2898kg	2915kg
Maximum User Payload (A-B)	585kg	568kg	585kg	568kg	602kg	585kg
Essential Habitation Equipment	0kg		0kg		0kg	
Thermal Insulation Grade	THREE		THREE		THREE	
Recommended Maximum Trailer Weight*	2000kg		2000kg		2000kg	
Gross Train Weight*	5500kg		5500kg		5500kg	
BED SIZES						
Front Double	2.09m x 1.39m / 6'10" x 4'7" / 3'5"		2.11m x 1.39m / 6'11" x 4'7" / 3'5"		2.09m x 1.39m / 6'10" x 4'7" / 3'5"	
Front Nearside Single						
Front Offside Single						
Rear Double	2.08m x 1.45m / 6'10" x 4'9"		2.06m x 1.37m / 6'9" x 4'6"		1.83m x 1.33m / 6'0" x 4'4"	
Rear Nearside Single	1.92m x 0.80m / 6'4" x 2'7"					
Rear Offside Single	1.92m x 0.80m / 6'4" x 2'7"					
Rear Bunk Upper						
Rear Bunk Lower						
Front drop down bed	1.93m x 1.27m / 6'4" x 4'2" (option)		1.93m x 1.27m / 6'3" x 4'2"		1.93m x 1.27m / 6'4" x 4'2" (option)	

ESCAPE SPECIFICATION

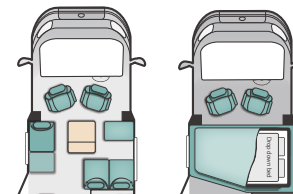
...CONTINUED



	Standard	Optional
Fiat MultiJet Diesel Engine	130	130 Auto
Engine Capacity	2.3ltr	
Engine Power	96kW @ 3600rpm	
Engine Torque	320Nm @ 1800rpm	
Roof Profile	Low-line	
Wheel Base	4.65m / 15'3"	
Seat Belts (inc. driver)	5	
Berths (Sleeping Positions)	6	
Overall Length (No Ladder)**	6.92m / 22'8"	
Overall Body Width (Mirrors folded)	2.31m / 7'7"	
Overall Height (Excludes Roof rack)	2.88m / 9'5"	
Optional Awning	Thule 6200 3.0m	
Maximum Technical Permissible Laden Mass (A)	3500kg	
Mass in Running Order (B)	2925kg	2942kg
Maximum User Payload (A-B)	575kg	558kg
Essential Habitation Equipment	0kg	
Thermal Insulation Grade	THREE	
Recommended Maximum Trailer Weight*	2000kg	
Gross Train Weight*	5500kg	
BED SIZES		
Front Double	2.11m x 1.39m / 6'11" x 4'7" / 3'5"	
Front Nearside Single		
Front Offside Single		
Rear Double		
Rear Nearside Single		
Rear Offside Single		
Rear Bunk Upper	1.95m x 0.76m / 6'5" x 2'6"	
Rear Bunk Lower	1.89m x 0.73m / 6'2" x 2'5"	
Front drop down bed	1.93m x 1.27m / 6'4" x 4'2"	

↑ Optional 5th belt and drop down bed spec

An additional belted traveling seat and drop down bed can be added to the 674, 684 & 694:



Berths (sleeping positions)	+ 2
Reduced payload due to addition of seat and manual bed	- 100kg
All other specification as table	

Note: The mass of the additional passenger must be taken into consideration when loading the vehicle

Notes

- The Maximum User Payload includes:
 - the conventional load (this is the allowance for passengers)
 - essential habitation equipment (items and fluids required for safe and proper functioning of habitation equipment)
 - optional equipment (items available from the manufacturer over and above the standard specification)
 - personal effects (those items not covered by the above)
- The Mass in Running Order is the mass of the unladen vehicle including a 75kg allowance for the driver plus engine coolants and 90% of the fuel tank capacity and 1 x 6kg Calor Lite LPG cylinder. The MRO is calculated with the fresh water tank empty. If you travel with water in the fresh water tank then the payload will reduce accordingly.
- Please take care to ensure that you have allowed for the masses of all items you intend to carry in the motor caravan, e.g. passengers, optional equipment, essential habitation equipment and personal effects, such as clothing, food, pets, bicycles, sailboards, sports equipment etc.
- Warning - under no circumstances should the maximum technical permissible laden mass of this motor caravan be exceeded.
 - * With this vehicle configuration it will be necessary to reduce the payload carried inside the van when towing to ensure the maximum MTPLM and maximum axle loads are not exceeded.
 - # Please note that the additional weight of the tow bar and trailer nose weight increases the rear axle loading of the motor home so care should be taken that the rear axle load is not exceeded when towing. To ensure adequate road holding, the load on the front axle, under all conditions, must not be less than 40% or more than 70% of the total weight. Care must be taken when distributing loads. The loadings and weights above are maximums and must not be exceeded under any circumstances.



VALUE ADDED PARTNERS



Swift is delighted to have secured exclusivity to fit the Duvalite mattress as standard in all fixed bed models across all motorhome ranges. This innovative lightweight Memory Fibre Mattress is as comfortable as memory foam but has many other benefits. Constantly innovating Duvalay ensure our customers have the premium night's sleep they need and deserve.



Truma provide one of the industry's leading heating systems which features as standard on Escape models. The Truma Combi heater is lightweight and compact as well as quiet in operation, and there is an efficient boost function for a fast supply of warm water and room heating in a short time. Truma carry out cold chamber testing of our products to prove they meet the Grade 3 standard for heating and insulation.



Swift recommend Oyster satellite TV and broadband. Permanently mounted dishes fold away neatly when travelling then raise and locate the satellite signal automatically seconds after activation. Made in Germany, they come with a 3 year warranty and there is a dedicated UK service centre.



Swift Group are proud to support a charity local to them called the Daisy Appeal. The Daisy appeal is giving loved ones faster, more accurate, diagnosis of three of the region's biggest killers – cancer, heart disease, and dementia.

The Charity's aim is to provide a world-class PET-CT scanning facility which will provide a comprehensive clinical service alongside an ambitious clinical research programme exploring new applications of imaging techniques.

Currently in the UK, most PET-CT scanning is carried out on cancer patients. However, it has great potential in various heart, neurological and other diseases. Many of these will necessitate the use of short half-life radioactive 'markers' which will need to be manufactured on site. Hence the requirement of a purpose built cyclotron, radiochemistry and radiopharmacy facility.

For every caravan, motorhome and holiday home sold, Swift Group make a donation to the Daisy Appeal, helping them to reach their goal of becoming the UK's number one PET-CT service.

To find out more visit www.daisyappeal.org



Diamondbrite LEISURE

Swift are partnering with Diamondbrite Leisure - the ultimate in Paint & Upholstery Protection for your motorhome. The exterior nano-ceramic treatment forms a high-gloss coating for easier cleaning and never needs polishing, while the upholstery protection resists staining. It is professionally applied at your dealership and comes with a lifetime guarantee plus complimentary aftercare pack.



SWIFT



VISIT SWIFTGROUP.CO.UK TO...



Configure your model



Watch videos



Download brochures and handbooks



Find a dealer



Social

DISCLAIMER

This brochure does not constitute an offer by Swift Group Limited (Swift). Swift reserves the right to alter specifications and prices at any time as materials and conditions demand. Distributors and dealers sell Swift products on their own account and not as agents of Swift. Accordingly, they have no authority to bind Swift or to make any representation or undertaking whatsoever on behalf of Swift. All props are for photographic purposes only and are not included in the specification. Models shown may be fitted with optional extras. Issued September 2018.

