

CREATING SMILES FOR LIFE



SWIFT

PURE
AGILITY



2019
**ESCAPE
COMPACT**



SWIFT

CONTENTS



DIFFERENCE

10 reasons to buy a Swift Motorhome

02



ESCAPE COMPACT

Explore the Escape Compact range inside and out

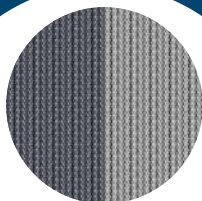
13



FEATURES

Impressive style, comfort and technology

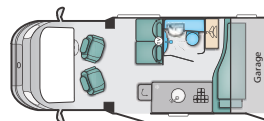
20



FABRIC OPTIONS

Choose the option that matches your style

23



SPECIFICATION

Choose from 3 models, from 2 to 4 berths

24



PARTNERS

Working together to bring you the best

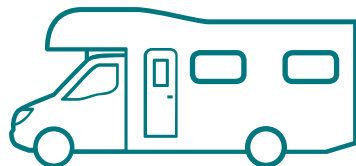
26

10

Reasons to buy a Swift Motorhome

Whether you are seeking exhilarating adventure
or peace and tranquility, our aim at Swift is to
make your holiday as comfortable
and enjoyable as possible

Find out what sets Swift apart



1

Reliable Build Quality

Exclusive to Swift, SMART Construction is the UK's most popular modern construction system. Years of research and rigorous testing went into its development.

**No wonder we've given
it a 10-year manufacturer
bodyshell warranty**



SUBJECT TO T&C'S



2

Protecting good looks

GRP outer skin, hail resistant roof and GRP rear gives a tougher exterior; more impact resistant than aluminium and easier to repair than ABS. Inside, cushioning tested to extreme, bleachable carpets and optional SwiftShield fabric are all designed to keep your home from home looking its best.

Swift motorhomes are built to last



3

Touch Control

Swift Command with new touchscreen control panel, user friendly design and easy to follow navigation with compatible smartphone app to manage key functions like heating.

**Vehicle management at
your fingertips**

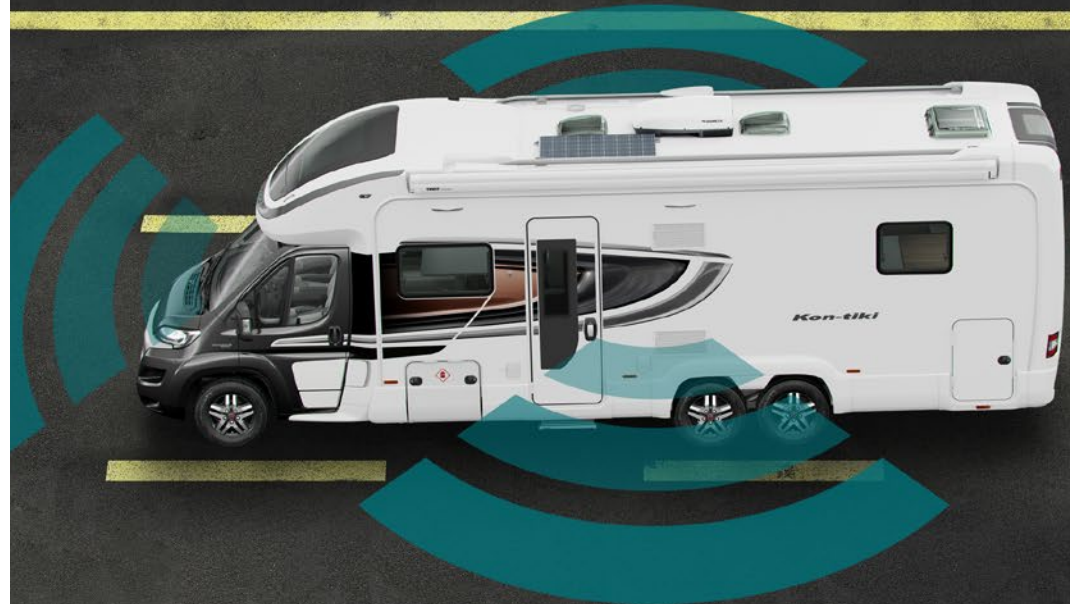


4

Secure and Save

With a pre-installed Swift Command Thatcham Category 6 approved pro-active tracker (subject to annual subscription) and VIN CHIP™ identification system concealed within construction to deter theft and aid quick recovery, you can better secure your vehicle and save with insurance discounts (Discounts depend on insurance provider).

Enjoy extra peace of mind



5

Outstanding Customer Service

Get issues resolved promptly with Connect Direct, our dedicated online customer service account for new owners. Report any problems directly to Swift, and we'll work with your dealer to resolve it as quickly as possible.

With you every step of the way



6

Approved Dealer Network

With the largest dealer network, expert advice is on hand right across the UK thanks to our Approved Dealer Programme. Extensive training programmes for dealer teams through the Swift Academy to support and enhance your Swift experience.

Wherever you wander, you're never too far from a Swift Dealer



7

Relaxing Space

Stay warm and sleep tight every night with Grade 3 heating and insulation along with a Duvalay Duvalite lightweight memory fibre mattress, exclusive to Swift, on all fixed beds.

Relax in comfort on the premium seating – with supportive cushioning and sprung beech slats.

**You're assured of a
comfortable stay**

duvalay[™]
BEDTIME LUXURY

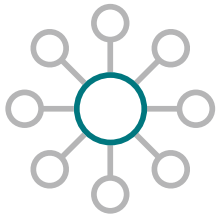


8

Wide Choice

We have different motorhome ranges to suit most budgets and styles – each with multiple layout options and most can be driven with a B licence.

We have the UK's best-selling motorhome range



9

Pioneers

Innovation is at the heart of our ethos, we never stand still. This philosophy spans everything Swift builds. From aerodynamic profiling through to modern interior styling, we ensure our products look sensational and work intuitively. We are proud recipients of a Red Dot Award.

**Think contemporary design
and clever storage solutions**





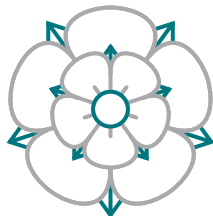
SWIFT

10

Europe's No.1 Brand

British owned, Swift started life as a family business in 1964 and retains that ethos today. We directly employ over 1,200 people, boosting the local economy, developing local expertise and reinforcing the power of British manufacturing.

**Proud to be Yorkshire
Born and Bred**



PURE AGILITY



2019 sees the launch of the new Swift Escape Compact, an exciting addition to the UK's best selling single motorhome range.

Slightly narrower than a standard Escape and available in three compact models all under 6 metres in length, the Escape Compact offers coachbuilt luxury in a size similar to a panel van.

With cab-coordinated graphics, its streamlined low profile exterior, stylish interior and great value specification, Escape continues to set the benchmark in the entry-level coachbuilt sector.

Durability and reassurance come as standard with industry leading SMART construction and Swift Connect Direct aftersales customer care.

Models shown in brochure fitted with Comfort pack



SWIFT







SWIFT



The opening sunroof, which comes as part of the great value Comfort Pack, allows plenty of natural light into the interior where 'Nova' soft furnishings in shades of warm grey and sky blue are paired with 'Aralie Sen' woodgrain.

Matt white high level lockers feature chrome positive locker catches for safe and secure storage. Adding to the quality feel are pleated cassette blinds to the windows.

Flexible seating and sleeping arrangements feature Swift's exclusive AirWave cushioning with a unique construction that expertly blends comfort and support. Fixed beds, including drop down beds, are topped with the ultra-comfortable Duvalay Duvalite mattress, again exclusive as standard equipment to Swift.



SWIFT





SWIFT



With Swift, compact does not mean compromise. The C205 has a rear lift up bed which allows garage style storage underneath.

A Truma Combi 4 boiler provides ample heating and hot water and there is a well equipped kitchen and washroom. Enhancements include practical 'Fero' dark grey worktops and useful USB points.

The enhanced Swift Command control system makes it easy to remotely manage and control onboard functions like heating with an improved user interface; and the option to subscribe to a pre-installed Thatcham Category 6 approved pro-active tracker, to better protect your precious possessions.

The optional special value Comfort Pack features a host of valuable additions including reversing sensors and Winter Pack and is always selected.





Optional bike rack

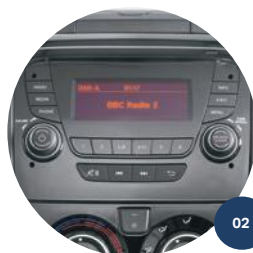


ESCAPE COMPACT HIGHLIGHTS

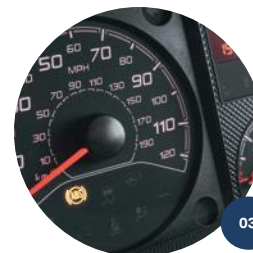
- 01.** Compact Fiat chassis cab with Fiat Euro 6 130bhp, 2.3 litre engine, complementary graphics and daytime running lights –all models at 3300kg
- 02.** Dashboard design with fully integrated factory-fit DAB Radio/MP3 player with Bluetooth and switch-off timing adjustable up to 3 hours and wing mirror antenna for better reception
- 03.** ABS brakes and EBD (electronic brake force distribution)
- 04.** Full GRP rear panel with exclusive LED rear light clusters
- 05.** Swift AirWave cushioning for greater seating and sleeping comfort
- 06.** Exclusive Duvalay Duvalite Apollo Luxe mattress containing Freshtec – a market leading high spec foam offering maximum airflow for a cool, comfortable good night's sleep on manually operated height beds (C205 & C404)
- 07.** Bed mattresses and lounge bench seat cushions supported by spring assisted beech slats for extra comfort and easy access
- 08.** Combination thermostatic oven, grill and 3 burner gas hob all with electronic ignition
- 09.** Optional special value Comfort Pack incorporating panoramic opening sunroof and Winter Pack
- 10.** En-route dual fuel heating with Truma Combi boiler
- 11.** Large 7", easy to use, LCD colour touchscreen Swift Command control panel with improved functionality and app interface
- 12.** Microwave oven
- 13.** 'Nova' soft furnishing scheme with scatter cushions and 'Aralie Sen' woodgrain with contemporary colouring
- 14.** A minimum of four 230V sockets, 12V socket on rear passenger seats (model specific) and dedicated USB points
- 15.** Matt white overhead lockers with chrome handles and chrome push-button locks
- 16.** Ultra-low energy lighting system with LED spotlights and over-locker ambient lighting



01



02



03



04



05



06



07



08



09



10



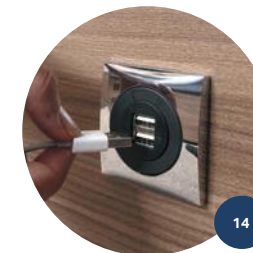
11



12



13



14



15



16

ESCAPE COMPACT FEATURES

Chassis-Cab

- White Fiat chassis cab
- Front bumper finished in body colour
- Daytime running lights
- Fiat Euro 6 130bhp, 2.3 litre engine
- Dashboard design with fully integrated factory-fit DAB Radio/MP3 player with Bluetooth and switch-off timing adjustable up to 3 hours and wing mirror antenna for better reception
- Cab battery isolation switch to prevent discharge in storage
- Driver's airbag
- Thermal cab window covers
- Cab carpet (removable)
- Captain's chairs with twin armrests and integrated headrest
- Driver and passenger seats with:
 - Position, height and rake adjustment
 - Swivels
 - Two armrests
 - Fully upholstered covers
 - Seat base surrounds
- ABS brakes
- EBD (electronic brake force distribution)
- Immobiliser with rolling code
- Variable power steering
- Key fob operated remote central locking of cab doors
- Electrically operated and tinted cab windows
- Headlamp height adjustment
- Adjustable steering wheel position
- Central cup holder with dash mounted holder for full width tablet and pocket for smartphone with USB port for charging
- Door pockets with bottle holders
- 12V power socket

Body and Exterior Equipment

- 'European Whole Vehicle Type Approval ensures compliance with strict weight, dimensions and safety regulations
- VIN CHIP™ identification system concealed within construction to deter theft and aid quick recovery
- All models have a MTPLM of 3300kg and can be driven on a normal category B driving license
- Distinctive streamlined front profile
- SMART construction with full GRP bodyshell:
 - Strong, moisture proof 'PURE' Polyurethane timberless framed bodyshell with HD polystyrene insulation core
 - Balanced panel 31mm sandwich side walls with GRP outer and inner skin
 - 70mm 'Sandwich' floor construction with GRP outer skin, ply upper and high rigidity Styrofoam core
 - 31mm 'sandwich' construction hail resistant exterior GRP roof fully bonded for extra strength and flatness, and GRP inner skin
 - Full height GRP rear panel
- Compact narrow bodyshell 2000mm internal width and 1947mm interior height
- GRP front low-line pod with optional opening panoramic sunroof (part of Comfort Pack)
- Graphics scheme coordinated with cab
- White extruded skirts link with full GRP rear panel
- Large exterior 'Garage' access door – C205 only
- Main habitation door with 2 point locking system and integrated door retainer
- Single key for all habitation doors
- Flush fitting, double glazed, tinted acrylic windows with night latch ventilation
- 15" wheels with full wheel trims
- Exclusive styled front LED marker lights
- LED side marker lights
- Exclusive LED rear light clusters
- Low energy LED exterior awning light
- LED High-level brake light
- Provision for 2 x 6kg gas bottles with fitted butane/propane regulator and propane hose
- Spare wheel on under slung carrier
- Heavy-duty rear chassis members ready for optional towbar
- Bike rack fixing rails fitted to the rear

Living Area

- 'Nova' soft furnishing scheme with complementary scatter cushions
- 'Aralie Sen' woodgrain with contemporary colouring
- Matt white overhead lockers
- Chrome handles with push-button locks on overhead locker doors
- Ergonomically shaped rear travelling seats
- Lap and diagonal seat belts on all designated passenger seats
- High performance, durable Swift AirWave foam in seats and backrests for greater seating and sleeping comfort
- Soft touch, automotive style decorative blind and flyscreen surrounds (except kitchen)
- Exclusive Duvalay Duvalite Apollo Luxe mattress containing Freshtec – a market leading high spec foam offering maximum airflow for a cool, comfortable good night's sleep on fixed and drop down beds (C205 & C404)
- Bed mattresses and lounge bench seat cushions supported by beech slats for extra comfort
- Height adjustable manual drop-down bed with lower drop level to seats (C404 only)
- Lounge seat and bed tops spring assisted for easy access (except travelling seats)
- Seat backrest ventilation boards
- Desmo table with dedicated storage location
- Pleated cassette blinds with flyscreens on all windows
- Metal curtain tracks for room dividers and washrooms (model specific)
- Rooflight with flyscreen and adjustable blind
- Sectioned removable carpets for flexibility
- French Oak effect, high impact, scratch resistant floor lino
- Travel lock for TV brackets where fitted
- Removable stepwell mat
- Smoke alarm
- Carbon monoxide alarm

Kitchen

- 'Dometic 8 series 85 litre automatic energy selection fridge with 230V, gas and 12V operation
- Combination thermostatic oven, grill, 3 burner gas hob with electronic ignition and glass hob lid with auto gas shut-off functionality
- Built-in microwave oven with digital controls
- Rooflight with flyscreen and blind
- Granite-effect moulded kitchen sink
- Removable drainer and food grade nylon chopping board nestle together for easy storage in dedicated location
- Vector chrome effect kitchen mixer tap
- Kitchen worktop in 'Fero' dark grey with textured finish and complementary sink bowl colour
- Foldaway worktop extension
- Drawer storage under oven (model specific)
- LED strip lighting in china locker

ESCAPE COMPACT FEATURES

Washroom

- Washroom design with vanity unit, sink and shower
- 32mm thick entrance door with domestic style mortice lock and handle
- Chrome effect mixer tap for vanity and shower (trigger shower head)
- Thetford cassette toilet with electric flush and 18 litre wheeled tank
- Micro-Heki rooflight with flyscreen
- Mini LED downlights
- High gloss white washroom wallboard
- Overhead storage

Heating and Plumbing

- Grade 3 classification (EN 1646-1) for heating and thermal insulation (for sub-zero ambient temperatures)
- Dual fuel heating with Truma Combi 4 1.8kW electric/4kW gas/3.8kW combined with digital control
- Digital programmable controller for heating and hot water
- Truma 'Crash sensing Mono' regulator for en-route use of heating and water heating
- 100 litre internal fresh water tank with level sensor
- 60 litre waste water tank with level sensor
- Electronically operated drain valves on Fresh and Waste water tanks
- En-route heating for underfloor water tanks to keep defrosted
- Pressurised fresh water system with self-priming pump and accumulator
- 12V exterior power point for pump filling of water tank (pump not supplied)

Electrical

- Exclusive Swift Command control system with large 7" LCD colour touchscreen panel with improved user interface and functionality featuring:
 - Simple controls for monitoring and managing:
 - Power
 - Battery selection, battery level meter and power usage
 - 230V AC load limiter (settable between 5 amps & 16 amps)
 - Solar panel charging levels (where fitted)
 - Heating control of Truma system
 - Environment monitoring with internal & external temperature and internal humidity levels
 - Selected lighting control
 - Water system controls and tank levels and control of tank drain valves
 - Air-conditioning compatible with Dometic and Truma (dealer fit option, model dependent)
 - Pre-installed Swift Command Tracker, a Thatcham Category 6 approved pro-active tracker (subject to annual subscription)
 - Swift Command App with interface that is easy to use and intuitive, enabling you to manage and monitor key vehicle functions from your mobile device including power, heating and selected lighting:
 - Incorporates a simpler connectivity selection:
 - Bluetooth connectivity when with the vehicle
 - Wi-Fi / GSM connectivity when away from the vehicle
 - Includes the useful 'Places of Interest' feature including 'Campsites' from the Camping & Caravanning Club and Swift dealership locations

- Fully sealed, long life, 80 Amp-hour (Dir 2006/66/EC) leisure battery below driver's seat
- 12V socket for rear passenger seats
- A minimum of four chrome 230V sockets and dedicated USB points
- Mains consumer unit with mains isolators and 12V fuse board
- TV station with 230V and 12V sockets, aerial socket
- 25 Amp/300 Watt charger/transformer for leisure batteries
- Ultra-low energy lighting system:
 - LED spotlights
 - Over-locker LED ambient lighting
 - Adjustable LED cab reading lights
- 25 metre mains hook-up cable

Customer Service

- Exclusive Connect Direct online account with direct access to Swift

Factory Fit Options

- Comfort-Matic automatic gearbox with Fiat Euro 6 130bhp, 2.3 litre engine (only available in conjunction with Comfort Pack)
- Special Value Comfort Pack consisting of:
 - Cruise control
 - Panoramic opening sunroof with soft touch sunroof surround
 - Cab air-conditioning
 - Passenger air bag
 - Easy action concertina door flyscreen
 - Pleated windscreen blind
 - Status 570 TV aerial
 - Reversing sensors
 - Winter Pack with:
 - Waste water tank heater with en-route heating to keep defrosted
 - Under floor waste pipe insulation
 - Insulated drain valve covers
 - Fridge vent covers
- Full length Thule roll-out awning
- 'SwiftShield' stain resistant, easy-clean fabric
- Detachable homologated Tow bar and electrics (conforming to 94/20/EC or 55R ECE)

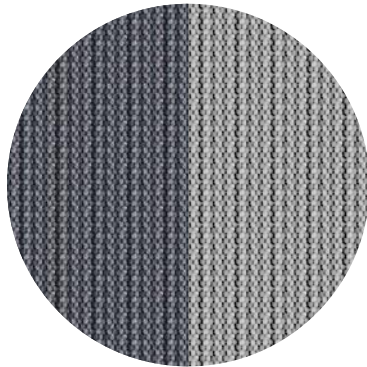
Dealer Fit Options

- Annual subscription to Swift Command Tracker by Sargent
- Roof mounted air conditioning unit (model dependent)
- Thule rail mounted rear cycle rack
- Oyster satellite system (model dependent)

ESCAPE COMPACT FABRIC OPTIONS

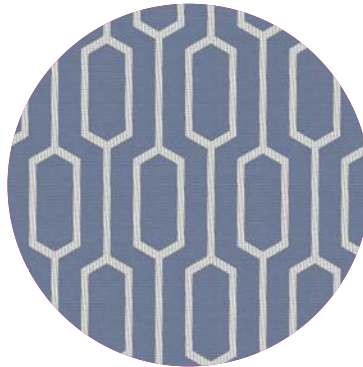
In addition to the standard fabric, a SwiftShield scheme is available as an optional extra .

SEATING

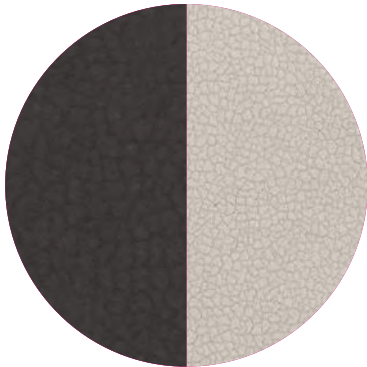
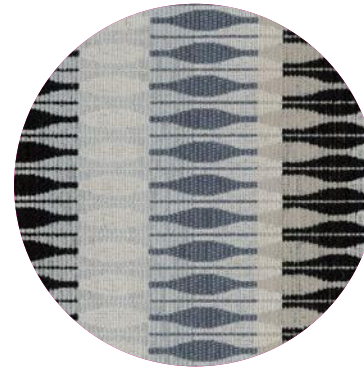


**'Nova'
upholstery
scheme**
Standard fabric

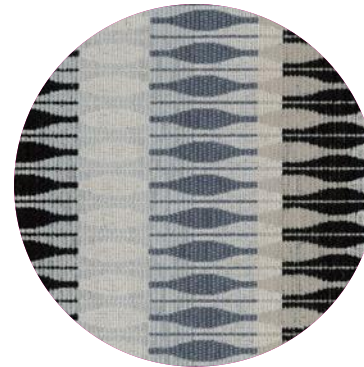
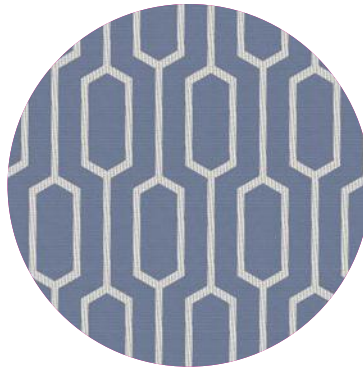
WINDOW PAD



**SCATTER
CUSHION**



**SwiftShield
upholstery
scheme**
Optional fabric



SWIFT
SHIELD



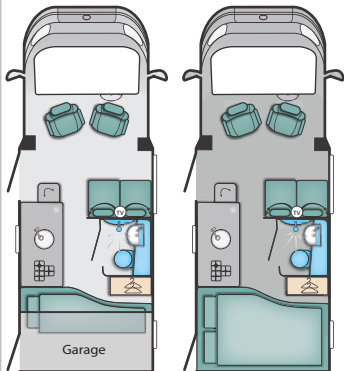
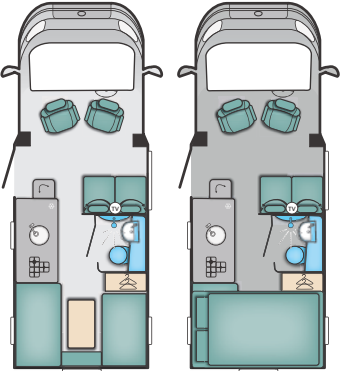
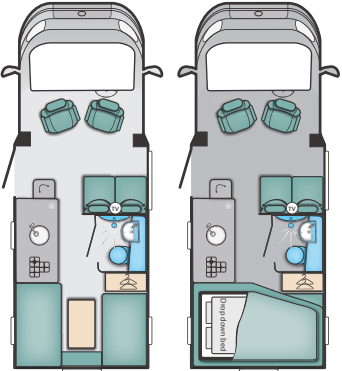











SwiftShield fabric has a soft suede type feel and has been treated during manufacturing to resist stains. It is very easy to clean and just requires a soft cloth dampened with water to remove most stains. SwiftShield is exclusive to Swift Group, you can find out more on Swift TV.

www.swifttv.co.uk

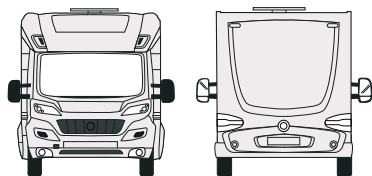








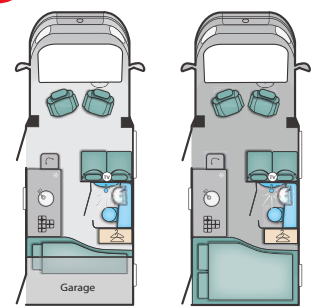
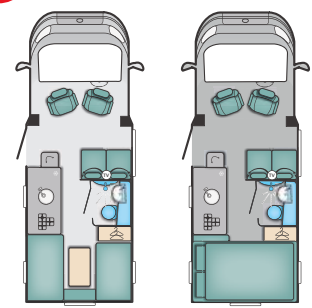
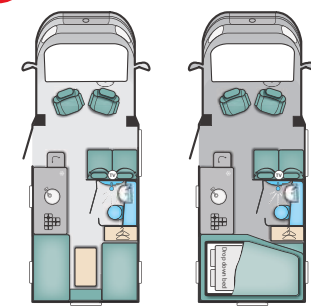
SWIFT

ESCAPE COMPACT RANGE QUICK VIEW

ESCAPE COMPACT C205 NEW	ESCAPE COMPACT C402 NEW	ESCAPE COMPACT C404 NEW
		
 Length 5.99m/19'8"	 Length 5.99m/19'8"	 Length 5.99m/19'8"
 Width 2.26m/7'5"	 Width 2.26m/7'5"	 Width 2.26m/7'5"
 Weight (MTPLM) 3300kg	 Weight (MTPLM) 3300kg	 Weight (MTPLM) 3300kg
 Belts/Berths 4/2	 Belts/Berths 4/2	 Belts/Berths 4/4

ESCAPE COMPACT SPECIFICATION



C205				C402				C404			
<div>NEW</div>								<div>NEW</div>			
											
Standard		Optional		Standard		Optional		Standard		Optional	
130		130 Auto		130		130 Auto		130		130 Auto	
2.3ltr				2.3ltr				2.3ltr			
96kW @ 3600rpm				96kW @ 3600rpm				96kW @ 3600rpm			
320Nm @ 1800rpm				320Nm @ 1800rpm				320Nm @ 1800rpm			
Low-line				Low-line				Low-line			
3.80m / 12' 6"				3.80m / 12' 6"				3.80m / 12' 6"			
4				4				4			
2				2				4			
5.99m / 19'8"				5.99m / 19'8"				5.99m / 19'8"			
2.26m / 7'5"				2.26m / 7'5"				2.26m / 7'5"			
2.78m / 9'1"				2.78m / 9'1"				2.78m / 9'1"			
Thule 4900 3.0m				Thule 4900 3.0m				Thule 4900 3.5m			
3300kg				3300kg				3300kg			
2692kg		2709kg		2697kg		2714kg		2762kg		2779kg	
608kg		591kg		603kg		586kg		538kg		521kg	
0kg				0kg				0kg			
THREE				THREE				THREE			
2000kg				2000kg				2000kg			
5300kg				5300kg				5300kg			
1.94m x 1.31m / 6'4" x 4'4"				1.93m x 1.20m / 6'4" x 3'11"				1.93m x 1.20m / 6'4" x 3'11"			
								1.83m x1.18m / 6'1" x 3'10"			

Notes

1. The Maximum User Payload includes:

- a) the conventional load (this is the allowance for passengers)
- b) essential habitation equipment (items and fluids required for safe and proper functioning of habitation equipment)
- c) optional equipment (items available from the manufacturer over and above the standard specification)
- d) personal effects (those items not covered by the above)

2. The Mass in Running Order is the mass of the unladen vehicle including a 75kg allowance for the driver plus engine coolants and 90% of the fuel tank capacity and 1 x 6kg Calor Lite LPG cylinder.
The MRO is calculated with the fresh water tank empty. If you travel with water in the fresh water tank then the payload will reduce accordingly.

3. Please take care to ensure that you have allowed for the masses of all items you intend to carry in the motor caravan, e.g. passengers, optional equipment, essential habitation equipment and personal effects, such as clothing, food, pets, bicycles, sailboards, sports equipment etc.

4. Warning - under no circumstances should the maximum technical permissible laden mass of this motor caravan be exceeded.

Please note that the additional weight of the tow bar and trailer nose weight increases the rear axle loading of the motor home so care should be taken that the rear axle load is not exceeded when towing. To ensure adequate road holding, the load on the front axle, under all conditions, must not be less than 40% or more than 70% of the total weight. Care must be taken when distributing loads. The loadings and weights above are maximums and must not be exceeded under any circumstances.

VALUE ADDED PARTNERS



Swift is delighted to have secured exclusivity to fit the Duvalite mattress as standard in all fixed bed models across all motorhome ranges. This innovative lightweight Memory Fibre Mattress is as comfortable as memory foam but has many other benefits. Constantly innovating Duvalay ensure our customers have the premium night's sleep they need and deserve.



Truma provide one of the industry's leading heating systems which features as standard on Escape Compact models. The Truma Combi heater is lightweight and compact as well as quiet in operation, and there is an efficient boost function for a fast supply of warm water and room heating in a short time. Truma carry out cold chamber testing of our products to prove they meet the Grade 3 standard for heating and insulation.



Swift recommend Oyster satellite TV and broadband. Permanently mounted dishes fold away neatly when travelling then raise and locate the satellite signal automatically seconds after activation. Made in Germany, they come with a 3 year warranty and there is a dedicated UK service centre.



Diamondbrite LEISURE

Swift are partnering with Diamondbrite Leisure - the ultimate in Paint & Upholstery Protection for your motorhome. The exterior nano-ceramic treatment forms a high-gloss coating for easier cleaning and never needs polishing, while the upholstery protection resists staining. It is professionally applied at your dealership and comes with a lifetime guarantee plus complimentary aftercare pack.



Swift Group are proud to support a charity local to them called the Daisy Appeal. The Daisy appeal is giving loved ones faster, more accurate, diagnosis of three of the region's biggest killers – cancer, heart disease, and dementia.

The Charity's aim is to provide a world-class PET-CT scanning facility which will provide a comprehensive clinical service alongside an ambitious clinical research programme exploring new applications of imaging techniques.

Currently in the UK, most PET-CT scanning is carried out on cancer patients. However, it has great potential in various heart, neurological and other diseases. Many of these will necessitate the use of short half-life radioactive 'markers' which will need to be manufactured on site. Hence the requirement of a purpose built cyclotron, radiochemistry and radiopharmacy facility.

For every caravan, motorhome and holiday home sold, Swift Group make a donation to the Daisy Appeal, helping them to reach their goal of becoming the UK's number one PET-CT service.

To find out more visit www.daisyappeal.org



VISIT [SWIFTGROUP.CO.UK](https://www.swiftgroup.co.uk) TO...



Configure your model



Watch videos



Download brochures and handbooks



Find a dealer



Social

DISCLAIMER

This brochure does not constitute an offer by Swift Group Limited (Swift). Swift reserves the right to alter specifications and prices at any time as materials and conditions demand. Distributors and dealers sell Swift products on their own account and not as agents of Swift. Accordingly, they have no authority to bind Swift or to make any representation or undertaking whatsoever on behalf of Swift. All props are for photographic purposes only and are not included in the specification. Models shown may be fitted with optional extras. Issued September 2018.